

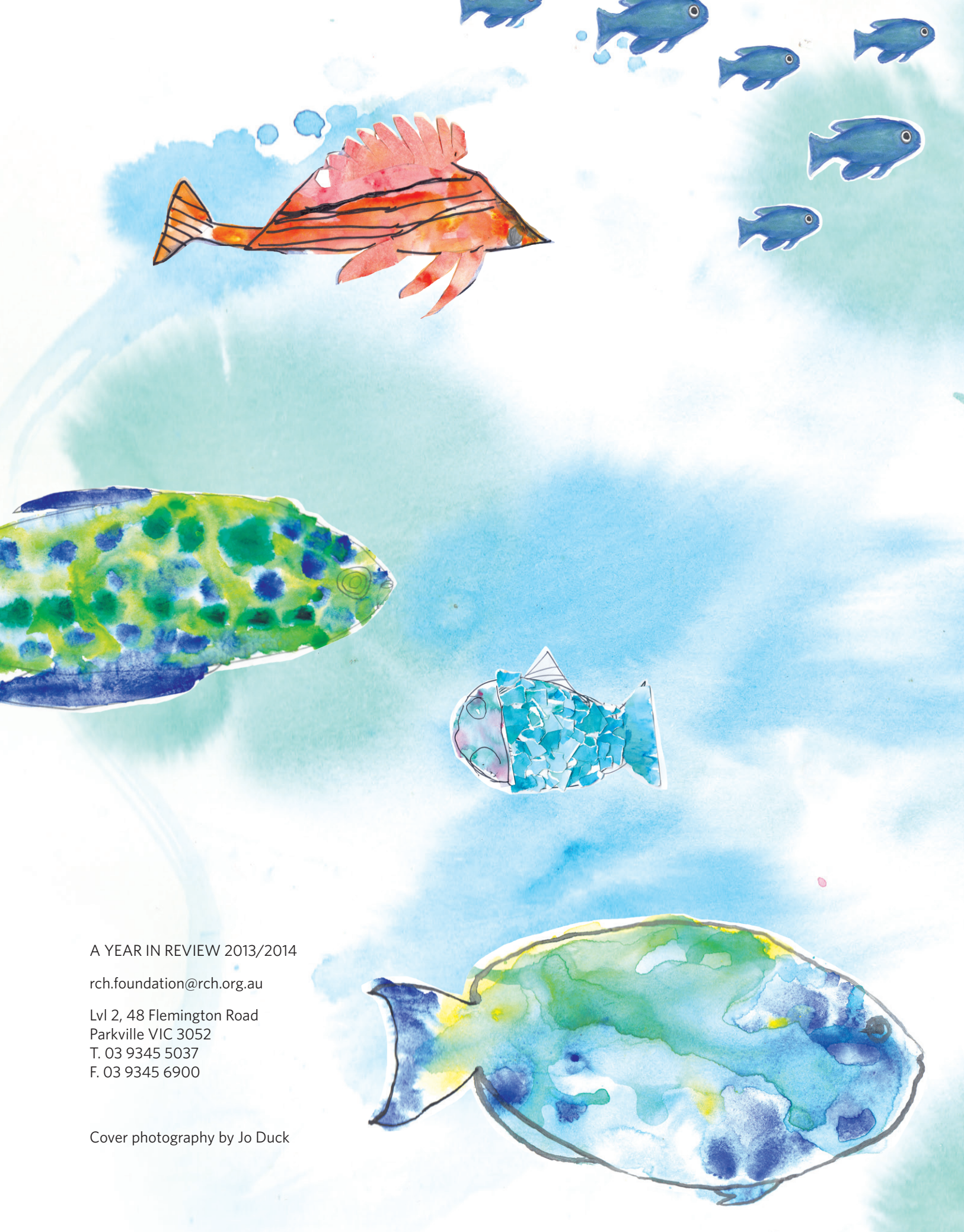
THE Impact OF Giving

MEET THE BOWNESS
FAMILY WHOSE LIVES ARE
TOUCHED BY THE RCH

INSIDE:
HOW DONOR FUNDS
HAVE AN IMPACT



The Royal
Children's
Hospital
Foundation



A YEAR IN REVIEW 2013/2014

rch.foundation@rch.org.au

Lvl 2, 48 Flemington Road
Parkville VIC 3052

T. 03 9345 5037

F. 03 9345 6900

Cover photography by Jo Duck



THE ROYAL CHILDREN'S HOSPITAL FOUNDATION

THE IMPACT OF GIVING

Do fish sleep? This was one of the questions that RCH children and young people set out to answer when they engaged in a book publishing project based on the hospital's amazing aquarium. This creative publishing project, funded by the RCH Foundation, saw patients working with RCH Education Institute teachers to research and investigate a particular species of sea creature found in the hospital's own two storey aquarium. Patients interviewed the aquarium divers who take care of the tank and its inhabitants, participated in creative writing workshops with their teachers and wrote fishy tales inspired by what they had learnt. Stunning watercolour illustrations were then created with the help of a Kids Own Publishing artist to complement these stories which have been turned into a delightful book called 'Aquarium'.

The RCH Education Institute is committed to providing a rich learning experience for children and young people so that their journey as learners continues in hospital.



THANK YOU

The Royal Children's Hospital Foundation (RCH Foundation) is constantly amazed at the strength of the community spirit that supports The Royal Children's Hospital (RCH). Every year, supporters from across the State give generously to the hospital. Some have experienced first-hand the great care provided by the RCH and want to say thank you, and others give to the hospital because they support innovation and leadership in paediatric healthcare. No matter what the motivation is, all our donors are united by the one dream; a better future for our sickest and most vulnerable children and young people.

Raising funds for the hospital only happens thanks to the remarkable and long-serving support of the hundreds of passionate volunteers who give up their time. We are honoured to be in a position where we can say thank you on behalf of the thousands of children and families from across Victoria - and at times our nation - who have and will benefit from your tremendous generosity.

Each year we produce our Impact of Giving to provide our supporters and community with both a picture of the impact of donor funds and an insight into the life of the hospital. The stories provide a cross section of the donors and fundraisers whose contributions make such a difference. They describe just a small number of projects, positions and initiatives that are transforming health care and the future of our patients and their families.

As you read the stories you will be introduced to a snapshot of some of the brave young people and their families who benefit each and every day from your support. You will read about the challenges that they face and the courage they have displayed. You will learn about the amazing care and treatment that they received and we expect that you will be touched by them all.

The past year was outstanding on many counts. The flagship community fundraising event, the RCH Good Friday Appeal, raised an incredible \$16.8million contributing 39% to the overall fundraising income total of \$39.9million. The RCH Foundation also approved \$35.7million in grants awarded to the hospital, of which \$22.8million was dispersed this year. The projects we funded are the hospital's highest priorities.

The RCH and its campus partners, the University of Melbourne's Department of Paediatrics and Murdoch Childrens Research Institute have articulated a compelling vision that will continue the campus' position as a world leader. This will be achieved by integrating clinical care, research and teaching. To achieve this vision, a greater philanthropic contribution will be needed. We are going to step up to that challenge and invite you to be a part of creating that future. We can't do it without you, so please join us as we seek to grow the contribution that philanthropy makes to this great hospital.

Thank you from all of us at the RCH Foundation. We remain in awe of your commitment; inspired by your desire to help and thankful for your time and energy. We hope you enjoy reading about the impact of your giving and how it helps the RCH continue its service of our precious children and young people.

Sue Hunt CEO
Peter Yates AM Chairman



ABOVE *Professor Christine Kilpatrick - RCH CEO*
LEFT *The Royal Children's Hospital*

HOSPITAL MESSAGE

The Royal Children's Hospital (RCH) is Australia's biggest and busiest paediatric hospital. Every day, thousands of children and young people come to our hospital for care, and the past year has been no exception.

In the 2013/2014 year we cared for more children than ever before.

There were 83,284 presentations to our Emergency Department, 12,137 children underwent surgery, 243,361 children had an appointment in our Specialist Clinics, 42,503 children stayed the night on our wards and we cared for 200 children in the community every day through our Hospital in the Home programs.

In looking after Victoria's sickest and most vulnerable children, our aim is always to deliver great care. With the launch of our new Strategic Plan earlier this year, we defined exactly what we mean when we say 'great care'.

For us at the RCH, great care is excellent clinical outcomes, positive experiences, timely access and zero harm underpinned by financial sustainability.

Each and every staff member is committed to understanding our role in delivering great care and finding ways, every day, to improve our work to ensure the very best outcomes for our patients and their families.

In fulfilling this vision, what remains clear is that we could not be truly great without the support of our volunteer and donor community.

From our dedicated Auxiliaries, to the individual and corporate donors who support us, we are united in our drive to achieve truly great outcomes for Victorian children.

This year, we were again amazed at the overwhelming support shown through the Good Friday Appeal. Victorians dug deep and delivered another amazing record, with \$16,846,396 raised for the RCH.

This, along with all the other support given to us throughout the year, means we can go above and beyond. We can provide seed funding to innovative research and clinical programs, we can invest in world-class technologies and we can establish academic and clinical positions that attract the sharpest minds.

With your support, we can always do more – and keep realising our vision of being a great children's hospital, leading the way.

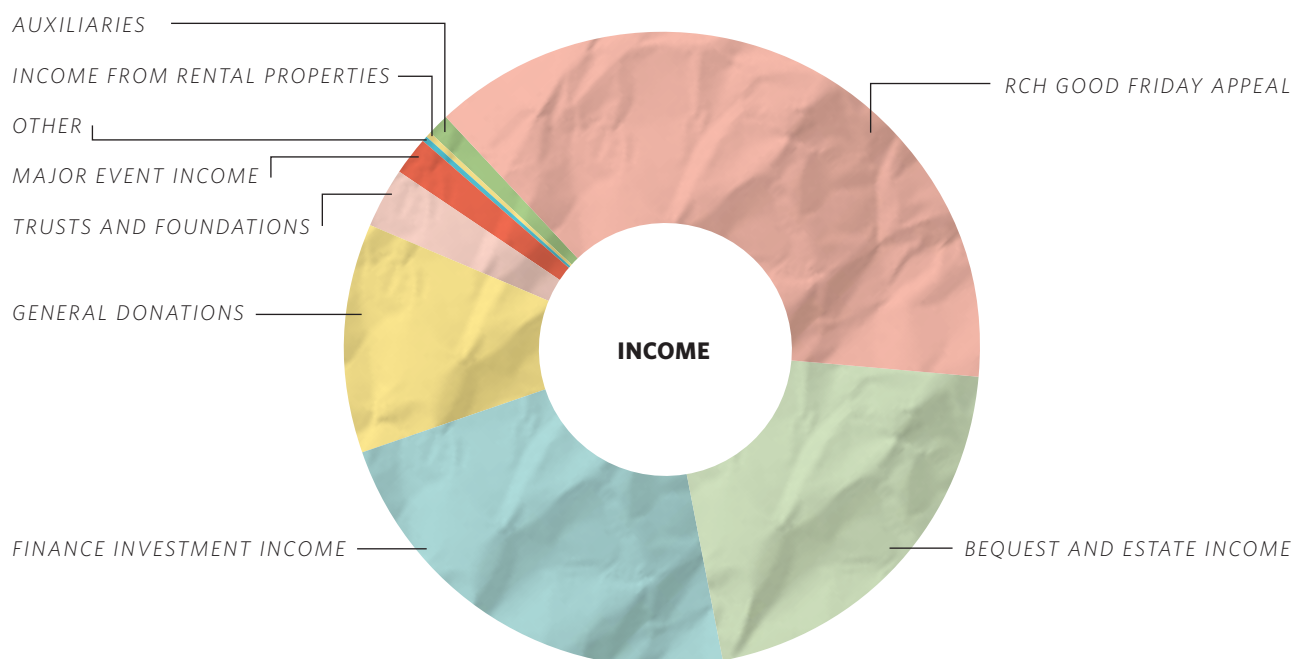
Professor Christine Kilpatrick
CEO - The Royal Children's Hospital

SOURCES OF REVENUE

In 2013/14 overall income grew by 6.7% to \$39.9 million.

The growth in Fundraising Income was driven by Bequests and Estate Income, Finance Investment Income, Auxiliaries and RCH Good Friday Appeal.





INCOME 2013/14	(\$)	(%)
RCH Good Friday Appeal*	15,733,901	39
Bequests and Estate Income	8,193,914	21
Finance Investment Income	9,074,945	23
General Donations	4,666,515	12
Trusts and Foundations	1,032,025	3
Major Event Income	702,019	2
Other	54,933	0.14
Income from rental properties	164,903	0.041
Auxiliaries**	221,331	1
Totals	39,844,486	100



* GFA revenue is net of costs incurred in conducting the Appeal








** In 2013/2014 Auxiliaries raised \$1,657,686 of which \$1,436,355 was included in the GFA total. The balance represents amounts collected towards the 2015 Appeal.

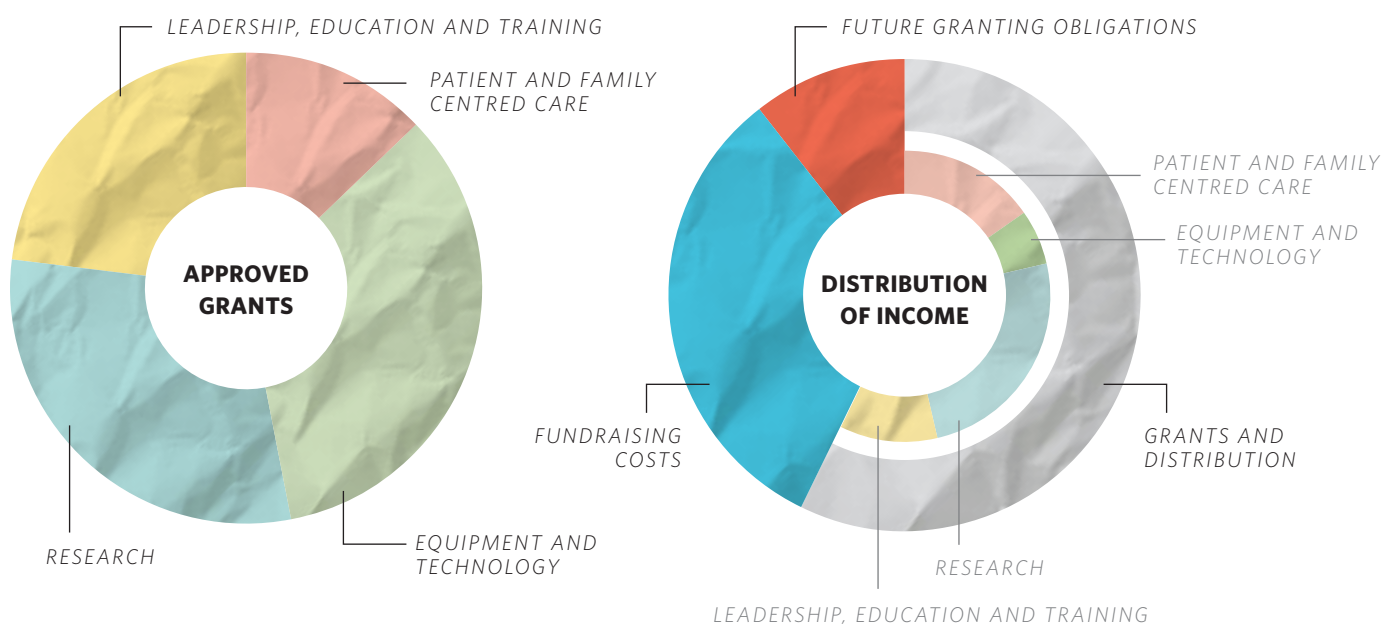
TOTAL APPROVED GRANTS 2013/14**(\$)**

 Patient and Family Centred Care	4,788,172
 Equipment and Technology	12,029,738
 Research	10,654,578
 Leadership, Education and Training	8,274,269
Totals	35,736,757*

*The RCH is undertaking a number of projects that will be carried out over 3-5 years and this figure reflects that.

DISTRIBUTION OF INCOME**(\$)**

 Grants and Distribution	22,867,832
 Patient and Family Centred Care	6,088,405
 Equipment and Technology	2,483,725
 Research	10,007,259
 Leadership, Education and Training	4,288,443
 Future Granting obligations	12,808,638
 Fundraising costs	4,168,1016
Total	39,844,486



HOST A ROAST

The Bowness family are making a difference.

Kirsty and Stephen Bowness first got involved with the hospital when son Liam was diagnosed with Cystic Fibrosis (CF). The diagnosis stunned them, coming to light via a routine newborn screening.

“Our initial feelings were utter shock mixed with fear of the unknown,” says Kirsty. “It was a time of conflicting emotions, as we felt so much joy to be new parents of this gorgeous little boy, but at the same time an overwhelming sadness and fear about what this diagnosis could mean.”

The family were put in touch with the RCH cystic fibrosis team and quickly met Dr Colin Robertson, Chief of Medicine. Their initial visit with Dr Robertson highlighted the compassion RCH staff have for their patients, leaving a lasting impression.

“Dr Robertson greeted Stephen and I before peering into Liam’s pram and, though he was so little, saying in this bright and confident tone, ‘So, this is Mighty Liam!’. This moment is forever burned into my memory because it encapsulates Dr Robertson’s perspective and approach. Yes, Liam was tiny and just diagnosed with CF, but to Dr Robertson, he was ‘Mighty Liam’ — no diagnosis was going to stop Liam from being mighty.”

Unfortunately, daughter Grace’s arrival was no less worrying. In Kirsty’s last weeks of pregnancy, an ultrasound detected that Grace had a bowel obstruction. In her first 24 hours of life, Grace underwent surgery to remove the obstruction — an indicator of CF — and was soon given the same diagnosis as her brother.

“Her official CF diagnosis was given when she was about a week old. Stephen and I were in the blur of being with her while she recovered from surgery and caring for Liam who was just 17 months old. It was the most difficult, challenging and heartbreaking time our family has endured. There’s nothing worse than not being at home; we don’t function when we aren’t together. I recall ringing our families to give them the news of her diagnosis and, while there were many difficult calls made that day, we were absolutely inundated with such love, support, reassurance and encouragement from our family and friends, it was quite overwhelming.”

Grace underwent a final operation four months later for adhesions that formed after her previous surgery and the family continues to visit the hospital for check-ups. Throughout these sometimes stressful experiences, Kirsty and Stephen remain passionate about the RCH.

“The support we’ve received from the hospital has been amazing. Dr Robertson set the tone by assuring us that Liam and Grace were born at the right time, that research was bounding forwards and that they would lead rich and productive lives. This doesn’t stop us from feeling moments of immense grief for what we wish Liam and Grace didn’t have to endure, but we have those moments, we support each other in them, and we keep going.”

The family began their fundraising efforts by participating in running events, first with Mighty Liam’s Team, and eventually Team Liam and Grace in the Melbourne Marathon.

Over these runs, the Bowness family received overwhelming support from friends and family.

“Our first fundraising goal for the Melbourne Marathon was \$2,000 and we ended up raising over \$10,000, which was incredible,” says Kirsty. “But while the run was brilliant, it was very contained and didn’t have a lot of scope. After the third year, we wanted to try something new.”

Kirsty and Stephen spent months searching for the right fundraising idea, but in the end four-year-old Grace came up with it effortlessly. While out for ice cream with the kids, Kirsty was chatting with them about why they take enzyme capsules to help digest their food. Grace soon piped up saying it was because “we have 65 roasters, don’t we mummy?”

Touched by her first acknowledgement of the condition, Grace’s comment stuck with Kirsty and Stephen. While out running, the perfect idea struck: they would give Grace her 65 roasters. The Bowness’ latest fundraising effort inspired participants to host a roast dinner in July 2014 and raise money for Cystic Fibrosis. Throughout their years of supporting the CF Trust, Kirsty and Stephen have raised over \$54,000 and show no signs of stopping.

“We put the majority of our energy into supporting Liam and Grace and what’s left over we use to help other families coping with CF.”

Pictured right: Kirsty with her family - her support network. Kirsty and Grace preparing a roast. Stephen and Liam playing slides and ladders.



ELECTRONIC MEDICAL RECORD (EMR)

A first in the Australian health care system.

Medical records are undergoing a major transformation at the RCH.

Paper records — though seemingly old-fashioned — are commonplace in even the finest hospitals. However, the RCH is taking a big step into the future with the launch of a high-tech Electronic Medical Record (EMR).

Installed in most of the top US children's hospitals, the EMR will launch in 2016, house all patient information, and be used by all RCH clinicians. This will be the single biggest clinical transformation program the hospital has undertaken in its 144 year history. By integrating the patient monitoring systems into one central place, patients will receive the best, most precise care possible.

Regarded as the most outstanding information management tool, the EMR will incorporate everything from linking patient monitors so that readings are automatically transcribed into the system, to allowing doctors to input notes via voice recognition. The consolidation of all patient information

into one easily-accessible place means different departments can ensure they are working together to the patients' best advantage.

Professor Christine Kilpatrick, CEO, RCH said that the RCH EMR will profoundly shift not only the way we deliver healthcare, but also the patients' and families' experience of that care.

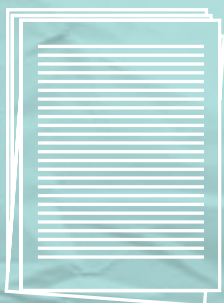
To take the EMR to the next level, the RCH Foundation has granted \$10.7 million to the project. These funds will support the patient portal. A first in the Australian health care system, the patient portal will enable patients and families to play a more involved role in their care by giving them the ability to:

- make and change appointments
- receive and store educational materials
- review test results
- access their record to review treatment plans, medications, assessments, allergies, and discharge summaries

- complete questionnaires, health status reports, and pre-appointment information
- communicate with health care providers
- integrate home-based devices for monitoring blood sugars, respiratory function, daily dialysis information, etc.

The EMR will also serve as a database from which researchers can gather information for ongoing studies. From helping to highlight if a child is at risk for a certain condition, to detailing information about groups affected by different types of disease, the EMR will reveal risks and contributing factors, and allow studies to be completed faster and with fewer resources.

By pushing the hospital's record keeping into the future, the EMR opens up a world of possibilities. Not only will it help the RCH better treat local patients, it will also ensure that the hospital rivals the top international paediatric centres for excellence in patient care.



**BIGGEST CLINICAL
TRANSFORMATION
PROGRAM THE
HOSPITAL HAS
UNDERTAKEN IN ITS
144 YEAR HISTORY**

ARCH

Arts at The Royal Children's Hospital

People are often surprised to hear that there is a dedicated arts program at the RCH, but after learning about its therapeutic benefits to patients, they get behind this important initiative wishing for all hospitals to do the same.

Arts at The Royal Children's Hospital (ARCH) is recognised for innovation and quality. It aims to play a key role in enhancing the hospital experience, positively contributing to the healing environment by making it more stimulating, engaging and less stressful for patients, families and staff. The new hospital building and campus embody this approach and the development of the hospital wide program has brought creativity into the daily life of the hospital community.

After only one year, ARCH received the Highly Commended award for Use of Art in Healthcare from The International Academy for Design & Health.

ARCH programming embraces a wide range of creative activities and events, reflecting the rich diversity of our patients, families and staff while actively supporting creativity and learning.

Services which have creative elements in their work include play, music and art therapy services, The Festival for Healthy Living and the RCH Education Institute. Together all of these elements contribute to the widest application of the arts in a hospital setting.

The support of this pioneering program comes from the philanthropic community, and with continued support, ARCH endeavours to become a world-recognised program adopted by paediatric hospitals worldwide.



MELBOURNE CHILDREN'S TRIALS CENTRE

A hub for all clinical research

"Clinical trials are a vital link in the chain between new discoveries related to human biology and the actual delivery of good health. They are a vital link because they are the only valid method by which it is determined if a treatment is actually effective, and cost-effective, at achieving good health. Clinical trials conducted in Australia save lives, prevent disability and produce cost-savings to the Australian community.

"This type of research provides evidence to clinicians on how to best treat diseases of major public health importance. As such the new knowledge that arises from these studies is immediately applicable and represents the form of investment in health research that has the shortest lag-time between inception and impact."

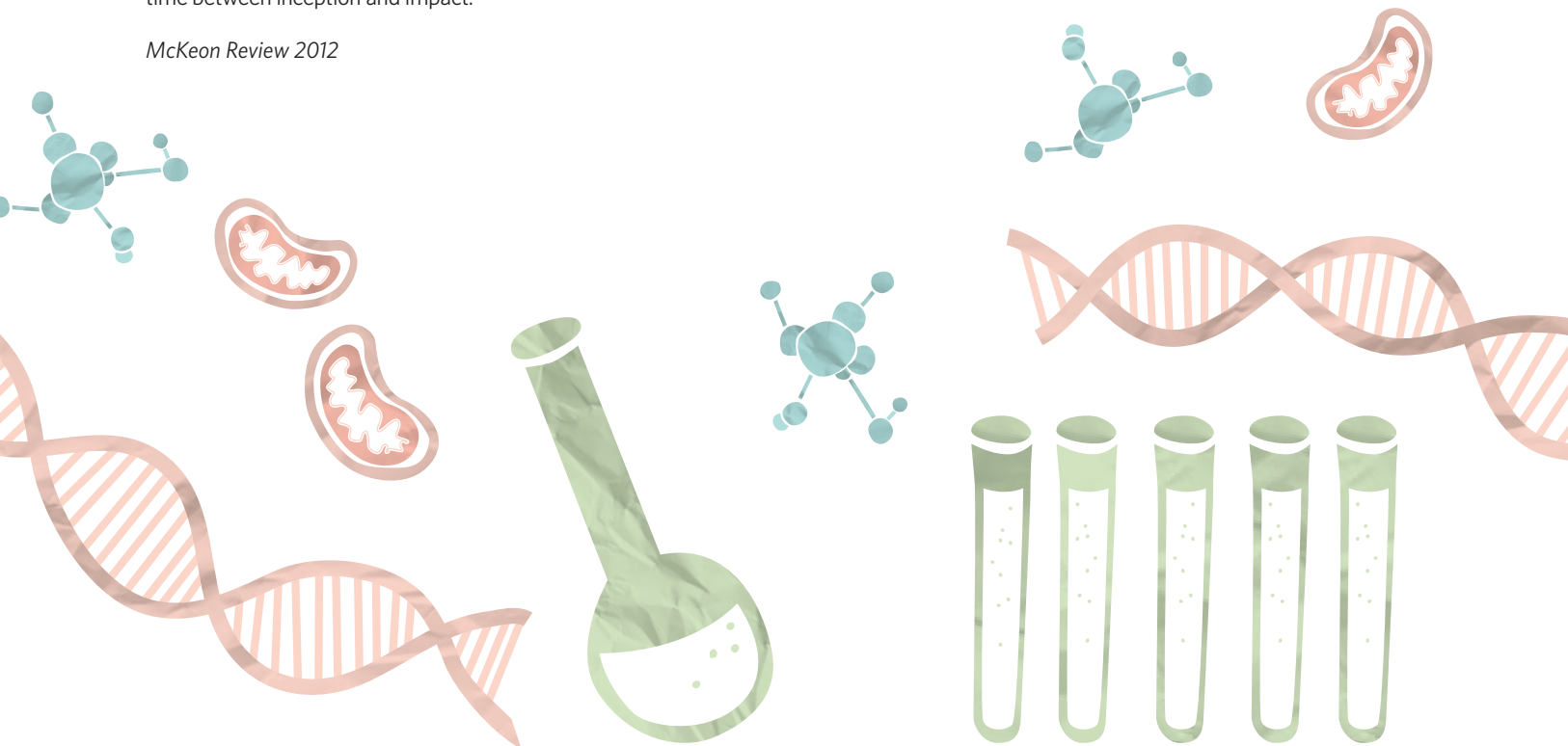
McKeon Review 2012

In late 2013, the RCH Foundation approved a multi-million dollar major funding grant that will have an enormous impact on patient treatment and care at the hospital. This important project is set to further establish the RCH as a world-leader in paediatric healthcare.

The Melbourne Children's Trials Centre will bring excellence in paediatric clinical trials. Trials provide the strongest evidence for the evaluation of and treatments in children. The RCH already conducts many high quality trials and with a dedicated centre on campus, better coordination and an improved facility the RCH will be able to perform more trials, more often.

The centre will support all types of trials; drug and non-drug; pharmaceutical and investigator driven, inpatient, outpatient and community based. Trials include screening, early treatment and new important therapeutics or improved clinical management and medical procedures.

Clinical trials are the core of clinical research; driving quality improvement and enabling the delivery of more effective evidence based medicine.



THE NEXT BIG THING

Getting top research projects off the ground

Cutting-edge research projects are crucial to the RCH for a number of reasons. Not only do they attract the best and brightest to work at the hospital, they fuel breakthroughs that help children get better and go home sooner. This is amplified by the fact that campus partner Murdoch Childrens Research Institute (MCRI) works so closely with the RCH, allowing ground-breaking research to be put into practice quickly.

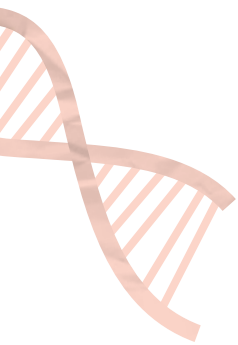
At times, these projects are tougher to find external medical research grants for. So to help get these projects off the ground, the RCH Foundation and MCRI have collaborated on a funding trial of their own: both organisations are sharing the first year of funding.

Once the first year is complete, the projects will be re-submitted to medical research funding bodies. With one year of data information and results to add to a granting submission, the projects should have a competitive edge and stand a much better chance of receiving funding for completion.

Each organisation has granted \$25,000 each to the following projects:

1. **Tuberculosis:** aims to identify the biomarkers that allow for the development of a new generation of tuberculosis diagnostic tests
2. **Birth defects:** continuing research into a gene that seems central to the development of healthy babies with an aim to shed light on normal foetal development and prevent birth defects
3. **Autism:** trials of a new test to recognise Fragile X Syndrome (FXS) during the neonatal period, which would allow intervention treatment to be implemented
4. **Food Allergies:** testing a new model of care that will shift management of children with simple food allergies from hospital to community-based settings
5. **Thrombosis:** aims to understand why many children are inherently protected from thrombosis in order to prevent and improve treatment of it in children and adults
6. **Crohn's disease:** seeks to identify the impact antibiotics and immune suppressant drugs managing Crohn's disease have on gut flora and how specific bacteria can cause disease recurrence or remission
7. **Obesity:** research into a protein which may reduce the hormone resistance seen in conjunction with obesity and which can lead to Type 2 diabetes
8. **Gestational development:** aims to identify additional genetic regulators of gonadal development, which is essential for normal sexual development and reproduction
9. **Constipation:** testing parameters for painless electrical stimulation of the abdomen to increase bowel function in those suffering from chronic constipation
10. **Cancer:** the development of molecular tools to block a particular gene that seems to promote the growth and spread of major cancers

If this partial first-year funding helps achieve a positive result for these projects, the RCH Foundation and MCRI will explore the possibility of establishing a further funding program in 2015.



"THE PRIVILEGE OF CARING
FOR SICK BABIES AND THEIR
FAMILIES MOTIVATES US ALL"



"THIS IS THE BIGGEST
HIGHLIGHT OF
MY CAREER"



"EVEN AFTER A BRAIN INJURY,
THE ABILITY TO CONNECT
WITH MUSIC IS UNIQUE"



"I DON'T KNOW WHAT I
WOULD DO IF I WASN'T HERE"



Prof. Rod Hunt

DIRECTOR OF NEONATAL
MEDICINE

GRANT : NEONATAL
NEURO DEVELOPMENTAL
FOLLOW-UP PROGRAM

A very important initiative supported by philanthropy is the Neurodevelopmental Follow-up Program. This initiative identifies babies at high-risk of developmental impairment so they can receive early therapy and go on to develop normally.

Melissa Heywood

CLINICAL NURSE CONSULTANT,
PALLIATIVE CARE

GRANT : DAME
ELISABETH MURDOCH
NURSING SCHOLARSHIP

The Dame Elisabeth Murdoch Nursing Development Scholarship has enabled me to implement a comprehensive communication skills training program to improve support provided to critically ill children and their families.

Janeen Bower

CLINICIAN / MUSIC
THERAPIST

GRANT : MUSIC THERAPY
IN NEUROSCIENCES AND
REHABILITATION

The Neuroscience and Rehabilitation Music Therapy Program is entirely philanthropically funded and enables the nurse co-ordinators to utilise music therapy in patient recovery, for instance, as the first intervention to decrease agitation related to post-traumatic amnesia.

A/Prof. Michael Cheung

DIRECTOR OF
CARDIOLOGY

GRANT : RESEARCH INTO
THE CHILDHOOD ORIGINS
OF HEART DISEASE

One of the things I love about my job is that it's so varied. Funding support has helped us to make advances in clinical and research areas. Big projects need funding that the hospital can't provide and through the RCH Foundation we can apply for funds to kick-start initiatives.

"THE ENTHUSIASM OF
ALL STAFF MAKES MY JOB
EXTREMELY ENJOYABLE"



"I'M INSPIRED BY THE COURAGE
AND INNER STRENGTH OF THE
PATIENTS I PHOTOGRAPH"



"I'M THANKFUL TO MATTEL
FOR THEIR SUPPORT"



A/Prof. Ed Oakley

DIRECTOR OF
EMERGENCY MEDICINE

GRANT : POINT-OF-CARE
ULTRASOUND MACHINES

The Emergency Department is a highly active area and can be an uncertain place for many patients and families. These important machines improve accuracy of diagnoses, improve the safety and speed of procedures, and reduce the nosocomial infection risk.

Bert Di Paolo

SENIOR MEDICAL
PHOTOGRAPHER

GRANT : 3D IMAGING
CENTRE

The Muriel and Les Batten Foundation have supported us for a long time. We're leading the way in 3D imaging of paediatric clinical conditions and our images are used by many RCH clinicians to monitor conditions, plan treatment and complete research.

Anne-Maree Leahy

SENIOR EDUCATIONAL
PLAY THERAPIST

GRANT : HEALING
THROUGH PLAY

We use play to help patients process their hospital experiences. It's been great to work with the team from Mattel, who support us with toy donations and also awarded the RCH the Mattel Global Grant.

THE RCH IS RENOWNED FOR ITS LEADERSHIP IN PAEDIATRIC HEALTHCARE

*The following scholarships, leadership positions,
research chairs and fellowships funded by donors,
represents great minds, delivering great care.*

scholarships

Dame Elisabeth Murdoch Nursing Development Scholarship funded by RCH Auxiliaries

Hugh Rogers Scholarship

Jeannie H Poolman Scholarship

Jeff Crouch Memorial Scholarship

Karmien Chan Scholarship

Pelican Auxiliary Nursing Scholarship

Post-graduate Health Research Scholarship and Career Development Award Schemes

Post-graduate Nursing Scholarship

RCH Paediatric Handbook Scholarship

Rosemary Derham Scholarship

leadership positions and research chairs

Chair of Paediatric Surgery
Director of Clinical Research
Director Medical Education
Head Solid Tumour and Neuro-Oncology Programs
Jigsaw Foundation Chair of Plastic and Maxillofacial Surgery
(co-supported by State and Federal Government)
Loti and Victor Smorgon Chair of Paediatrics
Professor/Director of Cardiology
Professor/Director Nursing Research
Stevenson Professor of Paediatrics

fellowships

Allergy & Immunology Fellowship
Burns Fellowship, co-funded by RCH Foundation and Alfred Health
Clinical Fellowship in Neuromuscular Disease, funded by CSL Limited
Endocrinology & Diabetes Clinical Research Fellowships, funded by Novo Nordisk and Ipsen
Gastroenterology Fellow, funded by Nestle
Neurosurgery Fellowship
Neuroscience Fellowship, funded by The Rats of Tobruk
Nurse Scientist Fellowship, co-funded by RCH Foundation and Baker Foundation
Senior Fellowship in Quality & Medical Workforce
The Aitken Fellowship, funded by the Estate of Ilma Mary Short (Aitken)
Uncle Bob's Neurology Fellowship

HARRISON

One breath at a time...

Kate Gurney's worry-free pregnancy did not prepare her, or fiancé Scott, for the difficulties their beautiful baby boy would experience.

Harrison Nugent was delivered full-term, but quickly showed signs of respiratory distress. His little body struggled to take a breath and he couldn't breastfeed without turning blue. Following overnight observation, he was quickly moved to neonatal intensive care before being assessed by an RCH specialist.

The cause of Harrison's distress was pyriform aperture stenosis, a rare congenital anomaly where the opening of the nose is too small for air to pass through. With all newborns being nasal breathers for the first six months, this posed a serious problem. The severity of Harrison's condition led him to be transferred to the RCH Butterfly Ward in preparation for surgery.

"When faced with this awful situation, everyone at the hospital was radiant with positivity, so that it was nearly impossible to feel overcome by the serious reality. The overall culture of the hospital, from the staff to the interactive elements of the facility, gave every day a bit of extra light."

Harrison underwent two operations to correct his breathing problem; his situation being so unique that the second operation was a first for the hospital. Though Harrison came through his surgeries with flying colours, post-op tests revealed that he suffered from

central apnoea's, where he ceased breathing for periods of time while sleeping. Oxygen was administered during his stay at RCH to avert this potentially harmful situation.

In total, Harrison spent ten weeks at the hospital before gaining enough weight to be pronounced healthy enough to go home. Despite the difficulty and duration of Harrison's stay, Kate and Scott are forever grateful for the care Harrison received.

"Looking after our newborn 24 hours a day, the nursing staff were like supportive grandparents. They not only provided medical care, but also gave him cuddles during the evening when we couldn't be there."

Nowadays, Harrison is a typical ten month old. It still takes a little extra effort for him to breathe, but he's expected to grow out of his condition. Kate and Scott are focussed on keeping him happy and healthy so he enjoys a typical childhood. An avid crawler, Harrison is showing signs of walking soon, hopefully in time to accompany mum down the aisle. With Harrison getting stronger every day, Kate and Scott can now finalise plans to tie the knot.

"We are forever grateful to the RCH and will fundraise each year to help the hospital," says Kate. "We are very lucky our story has a happy ending."

Pictured right: Harrison with mum Kate at the RCH





JUSTIN

It all started with a sore knee...

At age two, Justin Kwan started experiencing pain and swelling in his left knee. At first, his mother Aida suspected it was nothing more than a childhood injury. However, the pain persisted, to the point where Justin began wondering why he couldn't play with his friends.

"One day, Justin came up to me and said, 'why can't I run like the other kids,' and I knew something was really wrong," says Aida.

Following a visit to their GP, Justin was referred to the RCH Emergency Department. His initial treatment consisted of two surgeries to drain fluid from the knee and shortly afterwards, he was diagnosed with juvenile arthritis. Throughout the process, Justin's family were amazed by the care and compassion the hospital staff showed them.

"The doctors, especially Dr Jane Munro with her dedication and professionalism, have inspired us throughout our journey at RCH," says Aida. "We love how exceptionally caring the hospital staff are. We know that we can call the rheumatology nurse anytime for help or advice if a problem comes up."

In order to keep his arthritis under control, Justin receives ongoing care and treatment — and the occasional steroid injection — from the Rheumatology Department. Though they visit the RCH regularly, these trips continue to be enjoyable experiences. "This is a place where sick children can have fun while being treated," says Aida.

Justin's time at the hospital has inspired him to fundraise for other children visiting the Rheumatology Department. This past autumn, he used his skills as a classical cellist to raise funds for the Good Friday Appeal.

"Justin will continue to give his support and commitment to RCH as a fundraiser," says Aida. "To us, the RCH is incredibly important and makes a big difference to sick children by providing the best and most appropriate treatment."

As Justin continues to grow, his parent's hopes for him are simple.

"Our goal is for Justin to get stronger and healthier so he can fight any illness he encounters. For the upcoming year, he will be able to play any sports and music he likes. He can now enjoy his life with minimal or no impact to his joints."

Pictured left: Justin at the RCH

HOLLY

When Holly became forgetful, losing the odd word in conversation, her family thought little of it.

Holly was a talkative child and, as her chattiness continued, there seemed little to worry about. When talkativeness gave way to a fear of speaking in class, everyone assumed it was a bad case of nerves. However, after mum Tracey witnessed Holly experience ten seizures in five hours, it was obvious something else was happening.

Tracey rushed Holly to the RCH Emergency Department and within a half hour she was admitted. Holly immediately underwent tests and an assessment by the Neurology and Neurosurgical team. While she initially presented as epileptic, further tests revealed a developmental tumour in her brain.

"The diagnosis was a shock for us, but as Holly was only eight years old, she didn't really understand and just took it all in her stride," says Tracey.

Developmental tumours are a malformation in the brain, but doctors soon discovered that a section of Holly's tumour was growing and it had to be removed. Further complicating the issue, the tumour was located in Holly's language centre, where speech is processed and formed.

As doctors studied Holly's brain scans and determined the best way to operate, Holly continued being a kid and didn't let the seizures stop her from enjoying life.

"Holly continued with dancing lessons, learning the clarinet, participating in drama group and school plays, all which involved performing on stage at some point. Being

nervous always brought on a seizure, but this never put her off performing and she would just play, dance and act the best she could during the seizures. We thought she was amazing to continue on."

Prior to undergoing surgery, Holly was made aware that there was a chance she might not speak or understand speech properly after the operation. However, these fears were happily banished when she came through surgery with flying colours.

The success of the surgery is due in part to the intra-operative MRI* Neurosurgeon Virginia Maxiner and her team used. Unlike standard MRIs, this innovative machine travels between operating theatres allowing the surgical team to scan Holly's brain and ensure the entire tumour had been removed. With this machine, Holly only needed the one surgery.

Holly is now recovering well and will soon be weaned off her epilepsy medication in the hope that she remains entirely seizure-free. In the meantime, she regularly visits the RCH for MRIs to monitor for any regrowth of her tumour.

"If you're fortunate enough to be treated at the RCH, you're in the best hands," says Tracey. "Our family is incredibly grateful for the treatment and care Holly received and continues to receive."

** This important equipment has been supported by the Good Friday Appeal*

Pictured right: Holly at the RCH



DAVID

Music makes him smile

For weeks he'd complained about soreness in his legs, asking to sit in the pram instead of walking. Unsure why, mum Kate scheduled a check-up which included a precautionary blood test. The results were concerning and their doctor sent them to the RCH for further tests.

They were conclusive: David had acute lymphoblastic leukaemia. Specifically, an overproduction of immature white blood cells, which crowd the bone marrow and prevent it from producing normal blood cells.

"The thought of my child having cancer had never once crossed my mind. Once the shock wore off, our emotions cycled between panic and horror," says Kate.

Towards the end of his initial treatment, David's left arm went limp and he began experiencing a significant amount of pain. A visit to the RCH Emergency Department included a number of tests, which indicated that David had suffered a stroke, a rare side effect of his chemotherapy.

David underwent surgery to stop the bleeding in his brain and remove the blood clot. Following surgery, doctors induced a 24 hour coma to reduce swelling in the brain. David spent two days in the Paediatric Intensive Care Unit before being moved to the Neurosurgery ward, where he spent six weeks.

As a result of the stroke, David temporarily lost the use of his left arm and his ability to

walk. It also took time for him to regain his ability to speak.

"For a three year old this was a lot to process and David was very sick and miserable. He lost all trust in adults, as there was rarely someone who came into his room that didn't do something to hurt him, while saving his life."

But there was one bright point for David: Janeen. One of the hospital's music therapists, Janeen stopped by David's room asking if he'd be interested in some music. He was and from that point on, Janeen's visits were the highlight of David's week.

"It's hard to express what it meant as a mother to finally see my little boy smile for the first time after such a horrendous couple of months of pain and suffering. It was like the first glimmer of light after the storm and reminded us that the David we knew and loved was still in there. Janeen was, without exaggeration, the only person that could get David to smile during that difficult time."

David continues to undergo treatment, but is progressing well and now visits the hospital as an outpatient.

"At the moment, things are relatively stable and David started school this year, which was a massive milestone. He still has a lot of time off for either treatments or feeling unwell, but we are very hopeful that he will be in the 90% of kids that don't relapse following treatment."

Pictured right: David with brother Matthew at the RCH



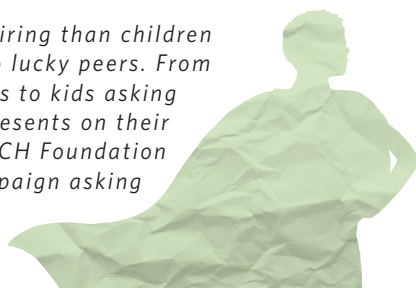
OUR FUNDRAISERS

From all across Victoria, mums, dads, sisters, brothers, friendship groups, clubs and individuals put aside life's pressures and challenges to volunteer their time and resources to hold a fundraising event for the RCH.

This year well over 100 fundraising activities were held, collectively raising millions of dollars, which goes to show that they are a fundraising force to be reasoned with. We've highlighted some of the weird, wacky and always wonderful fundraisers here.

FUNDRAISING SUPERHEROES RAISED \$25,000

There is nothing more inspiring than children fundraising for their not so lucky peers. From schools holding casual days to kids asking for donations instead of presents on their birthday. In 2014/15 the RCH Foundation will launch an official campaign asking kids to come together and fundraise to help sick kids get the best possible care.



**800 PLUS
AUXILIARY
MEMBERS
COLLABORATED
TO RAISE OVER
\$1.4 MILLION
FOR THE GFA.**



**15 GROUPS
RAISED
THEIR CUPS
AND DUNKED
THEIR TIM
TAMS TO
SUPPORT
THE RCH.**

REGULAR GIVING

Lucia regularly gives to the hospital. 13 years ago, her daughter Connie was treated for Hodgkin lymphoma. "The care and support our family experienced was phenomenal. It's an honour to support such a great hospital." Now 28 years old and in remission, Connie has grown up to become a primary school teacher who encourages her grade three class to connect with the hospital.

THE BEARD COLLECTIVE

For the entire 2014 winter season, Jarrad, Jackson, Hugh, Toby, Gary, Brett and Nathan were working to grow beards "as big as [they] could humanly muster" and raise money for the hospital.

Already veterans of a beard-growing challenge, the idea to support the RCH sprang from bearded-leader Jarrad's wife who joked that, if they were going to grow beards again, they better do it for a reason.

Though no member of the Collective has had a child admitted to the hospital, the team were inspired to fundraise for the RCH because "you never know when you'll need it."



LIGHT IT UP!

Throughout the silly season the Larsen's put on a light show like no other. Every year thousands flock to the house in Montmorency to check out the lights and leave a donation to the RCH.

In 2013, this family raised a massive \$8,000 which supported the Cardiac Unit!

WWII VETERANS RATS OF TOBRUK GAVE GENEROUSLY - PROVIDING A FELLOWSHIP IN NEUROSCIENCE



RUN FOR THE KIDS RAISED \$1.9M

On 13 April 2014, 35,160 athletes competed in the 5.5km and 15km courses raising an incredible 1.9million for the Good Friday Appeal.

BALL / DANCE

DAME ELISABETH
MURDOCH LUNCH,
CANCER CRUSADERS
DINNER DANCE,
CIKA (WE ARE THE
WORLD) BALL, SPRING
FASHION PREVIEW,
CELEBRATION OF
LIFE GALA BALL,
OPERA IN THE ROSES,
SPARKLING GEMS
BALL, OP SHOP BALL,

DINNER / LUNCH

DINNER DANCE LEGEND LESLEY LET HER HAIR GO FOR THE HOSPITAL RAISING \$7,500



A local dinner dance connected Lesley with some resident movers and shakers who offered to help. From there, Lesley's efforts snowballed and became a "real family and community affair." Posters were printed, local businesses pledged their support and soon 120 people were scheduled to attend her own dinner dance event!

In hopes of inspiring the most generous donations, Lesley auctioned off the shaving duties to the highest bidder live on the night. In the end, it was Lesley's ex-husband who won the prize, raising the bids from \$50 to a whopping \$1,050.

THE RCH GOOD FRIDAY APPEAL

Victorians broke the record books this year by raising almost \$16.9million for the 2014 Good Friday Appeal (GFA).

Since it was established in 1931, the GFA has raised a staggering \$258million for the RCH and today, support for this important annual Appeal continues to grow.

Each year thousands of volunteers give their time, expertise and creativity to help raise much needed funds. Their support is unwavering and their spirit is infectious as they help event organisers at the Run For the Kids, hold fundraising activities in their local communities, rattle coin collection tins across the state and help direct the thousands of visitors who attend the GFA Kids Day Out all-day telethon.

This year, the GFA Kids Day Out moved to the Melbourne Exhibition and Convention Centre (MCEC), where tens of thousands flocked to join in the fun, despite the rain. Families could have their faces painted, meet Channel 7 stars from Home and Away, Winners and Losers, My Kitchen Rules, or visit the pop-up Teddy Bear Hospital facilitated by medical students from the University of Melbourne Department of Paediatrics.

Patients at the hospital didn't miss out on any of the action with sporting heroes stopping by to catch up with the kids and show their support.

The activities of the RCH Good Friday Appeal led up to an all-day telethon, broadcast live across Victoria on Good Friday and supported by the Herald Sun, Channel 7 and 3AW 693.



Pictured above: Jennifer Keyte receiving the Auxiliaries cheque on behalf of the GFA from President Robyn Anderson and Madge Tate winner Phyl Brown.

FINNAN'S GIFT

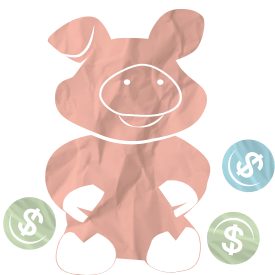


Finnan's Gift founders Alisa and Oliver Camplin-Warner have been fundraising for the hospital since their son Finnan sadly passed away, at just ten days old of congenital heart disease in 2010. Since its inception, Finnan's Gift has raised well over \$800,000 for the RCH which has enabled the hospital to purchase life-saving equipment.

This year, joined by their newborn Florence, Alisa and Oliver presented a cheque for \$75,000 to the RCH and announced that they were going to increase their efforts and aim to raise \$250,000 in 2014/15.

To get to that target the family have been working out and working hard. Amidst fundraisers and speaking appointments, the couple also committed to participating in the 2014 Melbourne Marathon as part of Team Finnan's Gift.

The strength and compassion shown by this family continues to be inspiring, commendable and unwavering.



BENDIGO BANK

The Bendigo Bank is a proud partner of the RCH Foundation.

In addition to developing a credit card and investment account that directly supports the hospital, Bendigo Bank staff are always keen to lend a helping hand and volunteer at RCH Foundation events and functions.

The Bendigo Bank community support is also far-reaching with staff holding fundraising activities across the state throughout the year. This partnership will continue to meaningfully support the RCH Foundation for years to come.



KMART

One of the most magical times of the year is Christmas, and thanks to the ongoing support of Kmart, the giant carolling Christmas Tree captures the imaginations of patients and visiting adults at the RCH. Their support brings smiles to all the kids who spend time at the RCH over Christmas.



WORKPLACE GIVING

Workplace Giving is a simple and tax effective way for employees to regularly donate to the RCH through payroll deductions, to help the hospital provide the best possible care.

Proving that it's the collaborative efforts of many that makes a difference, in the last financial year our workplace givers supported the RCH Music Therapy program and the ChIPS program for adolescents with chronic illness.



IN KIND

Support comes in many shapes and sizes. This year, the RCH Foundation developed an In Kind program especially for those businesses that generously provide support by way of product or service donation.



GENEROSITY MULTIPLIED

An unexpected gift made 54 years ago continues to positively affect The Royal Children's Hospital.

When well-known financier Harry Lyon Moss passed away in 1960, his Will was the talk of the town. In addition to providing support for his next of kin, Moss left the majority of his estate to the RCH. With no known prior ties to the hospital, his generous gift of £1 million placed in a trust was surprising, touching and has ultimately changed thousands of lives.

Over the years, interest on Moss' important donation has generated millions of dollars, equating to over \$40 million in distributions to the RCH since 1960, Moss' decision to leave a bequest to the RCH will continue to benefit the hospital indefinitely: a powerful legacy.

COMMUNITY FUNDRAISERS

Community fundraisers are supported by communities. On behalf of the groups listed here, we'd like to say a special thank you to the thousands who support them. Your generosity has made an enormous impact.

4Everyyoung [Zachary Cavallo & Maura McAleer]

A Celebration of Life

Ajay's Family Day

Altona Miniature Railway Open Day

ANZAPP Family Fun Picnic Day

Ashleigh's Angels

Aziza Cup

Bailey Field

Belinda Leventis

Ben Admon

Birdman Rally [Aaron Eidelson]

Bob's Christmas Shave

BSX2014

Build a Teddy

Carly Yelayotis

Charitable Cyclists [Anthony Bull]

Christmas Lights Display [Cherelle and Nimary Courts]

City2Sea [fundraisers]

City2Surf [fundraisers]

Clint & Pankys 24 Hour Gameathon

Collaborate for a Cause [fundraisers]

Dance for Purpose

David Kinnaird

Dinner Dance & Head Shave [Leslie Walker]

Elise Sneddon Foundation

Eltham Little Theatre Charity Concert

FIFA tournament [Alexandros Stefanos]

Finnan's Gift

Football Boys [Nathan Darlington]

Forever Johnno

Friday Fitness for Muscular Dystrophy

Giovanna's Gift

Give Everything But Up

Grace of Monaco Premier Screening [Barbayannis Lawyers]

Great Amazing Race

Gurmit Kaur

Halloween at Coal Creek Fundraiser

Harry Taylor's fundraising

Haven Market Stall & Raffle [Michelle Duffy]

Hester Annual Christmas Party

Isaac Small

Jadeybird Memorial Fund

Jar of Hope Raffle

Jenna and Luke Palmer

Jerry's Tri Team

Kangan Institute-Business Assessment Standard Conference

Kick It Down Under [Jeff Gordon Foundation]

Kinder Power Art Exhibition

Koda's Project

Lauren & Brigitte Khalil-Salib

Leanda Bowen

Lee Dali-Carruba's drawing fundraiser

London 2 Brighton Challenge [Melissa Carstein]

Loom Band Sale [Jesse Onas]

Makes the Cut [Emily Spagno]

Marysville Ultra Marathon 50km [Daniel Taylor]

Matty's Beard Shave [Motorsport Wheels & Tyres]

Melbourne Marathon Festival [fundraisers]

MGA GBI Hat Appeal

Mia Pamount

Mick Duyvestyn's Beard for a Year

Mind Over Matter Month

Miracle Baby Connor

Moe Shave [Laurie Daniels]

Mont Blanc Challenge [Nicholas Taylor]

Nick's Wish

NICU Tea Party [Abbie Thomas]

Nikita Azzopardi

Oaks Day Ladies Luncheon

OneSteel Christmas Bowls Night

Open Mic Night [Tara Coles]

Opera in the Roses

Parsons' Baby Birth Sweep

Peggy Piper Trust

Phoebe Foundation Music Festival

Pretty Little Drivers

Project Teddy

Rebecca Ratten

Red Tie Dinner Dance

Rene Hartnett Stall for Cancer Research

Ride Around the Bay [Frank Camenzuli]

INDIVIDUAL GIFTS

over \$5000

Protea Sale [*Riley Randall*]

Rotary Club of Werribee
200km Walk

Run Donna Run

Run Melbourne [*fundraisers*]

Headshave for Ryan

Scott McCoullough

Shave for RCH [*James Aussems*]

Special Events Committee

Stadium Stomp [*fundraisers*]

Stephanie Elliott

Swinburne University Trivia Night

T20 CF Charity Cricket Match
& Fun Day

Team Robins - Going Red for Feb

The Beard Collective

The Magic Money Fan [*Wyatt
Pilmore*]

Trek for Children's Health

Twice the guts double the glory
[*Michelle Duffy*]

Vietnamese Performing Opera

William Angliss BBQ at North
Melbourne Primary

Wills Memory

Write A Book In A Day

Zeke's Fund

Zoe and Ellis

Ahmad Agha & Family

Barry and Lindy Matters

Ben and Lizzy Cooper

Bob Gavranich

Brian White

Con and Tina Nianiakas

David Sheridan

Donald and Norah Houston

Donald and Simone Clayton

Ed Prendergast

Geoff Pritchard

George and Maureen Dyer

George Strintzos

Ian Kennedy AM

Ian Wong

Jocelyn Shand

John Agha

John Laidlaw

John Mathews

Lablanche M Trumbo

Leo Iazzolino

Luigi Ciavarella

Market Europa

Melton Country Club

Michael Stephens

Newborn Intensive Care Cot
sponsorship program

Pam and Barry Rickards

RCH1000

Rex Palmer

Robert Glas

Rotary Club of Sunbury

Sam Hofbauer

Sammy Kumar

Simon Chesterman

Sriharan Mahalingam

Suzanne Hoey

The Habib Family

The Marriott Family via HeartKids WA

The McCarroll Family

Tigers Clubhouse

Tony and Frances Costa

Warren Larsen

RCH GOOD FRIDAY APPEAL (GFA)

Every year thousands of families, individuals and businesses support the RCH by giving generously to the GFA. To all those who have supported the GFA, we thank you.

WORKPLACE GIVING

ADP
Allens Arthur Robinson
AMP
Australia Industry Group (AIG)
AXA Australia
BAE Systems Australia
Bain International Inc
Bank of Queensland
Bendigo Bank
BHP Billiton
Blackmores
Bluescope (Australia)
Bluescope Distribution
Bluescope Logistics
Bluescope LYSAGHT
Bluescope Steel
BP Foundation
Bupa
Charter Keck Cramer
Coca-Cola Amatil (Aust)
Coca-Cola Amatil Limited (Bayswater)
Delaware North Companies Australia
Ernst & Young
Freshmore Group
GTA Consultants
Industry Funds Management
JBS Australia
Louis Vuitton Australia
Macquarie Group Foundation
MECU
Medibank
Melbourne Water
National Australia Bank
National Wealth Management Holdings
Optus
Origin Energy
People's Choice Credit Union
Powercor Australia
Qantas Airways
Quirks Australia
Shell Australia
Smartsalary
South East Water
Stockland
Sugar Australia
Telstra
The MGI Foundation
Toyota Motor Corporation Australia
Turi Foods
Veda Advantage
Victoria Teachers Mutual Bank
Westpac Group
Wilmar Foods

CORPORATE FUNDRAISING

ANL Lighting
Aspire
Bunnings
Carew Bart
Charter Keck Cramer
Costco Wholesale Australia
Mitsubishi Australia
Moreland City Council
Norton Rose Fulbright Australia
Pacific Brands
Patterson Cheney
Ray White
SMS Management & Technology
Specsavers
Veda Advantage



CORPORATE DONATIONS

\$50,000+

Bayport Industries
CSL
Elite Property Group
Embracia
Mattel
Nissan Financial Services
Strathmore Community Bank

\$20,000+

Bendigo and Adelaide Bank
Casella Wines
Christmas Party for Special Children
Liverpool Football Club
Moniton
Myer Stores Community Fund
Nestec SA
Novo Nordisk Pharmaceuticals
SapuraClough Offshore
TGC Building & Routing

\$10,000+

AIA Australia
Aruba Espresso @ RCH
ASK Aluminium Fabrications
Australia Pacific Media
Cameron Industrial Commercial
Children's National Medical Center
Cooper Investors
Domain Charter Group
Gorman and Kelly Commercial Property Management
Healthwise Vic/Tas
Honda Australia
HRPR
I&D Constructions
Impact Digital
Ipsen
Johnson & Johnson Medical
Kozminsky
KWDoggett
N and V Strintzos
Nick Baldi Constructions
QOL Medical LLC
Sovereign Financial Group
Stuck on You
Wompro International

\$5000+

Access Mercantile Agency
Andreas Smetana Photography
Aromababy
Beston Group
Billi
Business Chicks
Carman's Fine Foods
Chapel Fitness
Complex Facade Installations
Costco Wholesale
Cube Collection
Hot-Shots (Australia)
Mercedes-Benz Australia/Pacific
Newskills
Pfizer Australia
Shine Australia
Skill Labour Service
Tabak Group
Team Zone
The IN Group
Universal Steel

ENDOWMENTS

Amy Dickinson Legacy CEF Management Account	Estate of Benjamin Barnes Bequest	Flora L Thompson Charitable Trust	Leigh and May Price Trust For Charities
Archibald Shannon Trust	Estate of Charlotte Marshall	Francis Thomas and Jeanette Warren Trust	Livingstone M M Fund
Arthur Edwin and Anne E Barry*	Estate of David Mathais Morgan	Frank and Sybil Richardson Charitable Trust	Margaret L Merrifield Memorial Fund
Arthur Wells Trust	Estate of Donald Kerr	Frank Hayley and Doris Hodgson Trust	Margaret E Croft*
Charles Wright Trust	Estate of Emma Nowak	Frederick B Shepherd Trust	Margery and Keith Aitken Foundation
Denis A King*	Estate of Ephraim Yoffa	Gary Thomson Endowment	Marjorie Hayes and Olivia Cock*
Dennis O Clarke Charitable Trust	Estate of Frank Hincks Bateman	George Pile Charitable Trust	Mary Symon Charitable Trust
Dorothy I Stirling Charitable Trust	Estate of George Roche	George Westleck and Violet Morewood Trust Fund	McWilliams Horatio R AXA
DTM and E Davies Memorial Trust	Estate of Harry Lyon Moss Trust Fund	Harry Tootal and Eva Broadhurst Memorial Trust	Mr and Mrs S Rothberg Charitable Trust
Dunn Family Perpetual Trust	Estate of Heather Sybil Smith	Helen Hadi*	Peter J Provelson Trust Fund
E and L Wears Memorial Trust Fund	Estate of Jane H Walker	Henry Brough Smith Charitable Trust	Silas Clark Charitable Trust AXA
E C Blackwood Charitable Trust	Estate of John Frederick Wright	Herbert W Hampton*	Spencer Lionel R V Trust Fund
E J and M Roberts Trust	Estate of John Murdoch	Isabella A Pritchard*	Taylor A L D Estate
Edith and Don Robinson Charitable Trust	Estate of John William and Anna M Ford Memorial Fund	J R G and E McKenzie Bequest	The Doris and Rupert Joseph Charitable Trust
Edith McTaggart Charitable Trust	Estate of John William Fleming	Jessie Burnett Carnegie AXA	The George Lawrence Godfree Bequest
Eliza Wallis Charitable Trust	Estate of Joseph Santamaria	John Anderson AXA	The Grant Bequest
Ernest L Brown Charitable Trust	Estate of Katharine St. Clair Nanson	John Henry Charitable Trust	The Margaret Jean Sutton Charitable Trust
Estate C D Lloyd Charitable Trust	Estate of Kevin Stewart Cowell	John Henry James Symon Charitable Trust	Thomas and Louisa Cowell Memorial Fund
Estate of A Bastings	Estate of Louisa Henty	Joseph and Kate Levi Charitable Trust	Waters Charitable Trust
Estate of Alexander C MacBean Bequest	Estate of R and H Taafe	Joseph Kronheimer Charitable Fund	William A Shipperlee*
Estate of Alice M Grimwade	Estate of The Late Jakob Frenkiel	Joseph Thornton Tweddle Trust	William Barr Trust
Estate of Arthur L Blannin	Estate of W J Walsh	Joyce A Healey Charitable Trust Fund	William Frederick Fletcher Charitable Trust
Estate of Augusta B Tadgell	Estate of William H Russell Trust Fund	Keith Goods Memorial Trust	William Macrow Estate
Estate of Barbara Luscombe	Estate of William Marshall	Kitty and Harry Ramondt Charitable Trust	
	Eugene and Janet O'Sullivan Trust		

* State Trustees Australia Foundation

ESTATES

Estate of Adolph Wasilewski	Estate of John Edwards	Estate of Robert William Lockyer
Estate of Alexis Robinson	Estate of John Nihill	Estate of Ronaldo Samios
Estate of Betty Atkins	Estate of John Nosenzo	Estate of Ross Douglas Murray
Estate of Bronislaw Oleksij	Estate of John Robinson	Estate of Sheila Box
Estate of Carine Jeanette Austin	Estate of Kathleen Clarke	Estate of Thelma A Cameron
Estate of Craig Kirkman	Estate of Keith Goldsbury	Estate of Vera Male
Estate of Daisy Sullivan	Estate of Leah Vardakas	Estate of William Brown
Estate of Dennis Cain	Estate of Margaret Cronin	Estate of William Noble
Estate of Desmond Geldhill	Estate of Margaret Stewart McDonald	Estate of William Page
Estate of Doreen Williams	Estate of Margret Nicholls	Estate of William Witherow
Estate of Dorothy Hopper	Estate of Marjorie Thatcher	Estate of Wilma Niel
Estate of Dorothy Johns	Estate of Mary Penberthy	
Estate of Dorothy Kermond	Estate of Mary Starr	
Estate of Dorothy Trew	Estate of Mavis Clinch	
Estate of Elizabeth Caddaye	Estate of Mavis Mason	
Estate of Elizabeth Farrell	Estate of Muriel Agnes Wylie	
Estate of Elizabeth Margaret Dawson	Estate of Olive Merle Chapman	
Estate of Elizabeth Taylor	Estate of Pamela Harper	
Estate of Emme Tempany	Estate of Patricia Carmel Stewart Kennedy	
Estate of Georges Rebboh	Estate of Patricia Kerr	
Estate of Gerald Pearce	Estate of Patricia Trimble	
Estate of Gertrude Silberberg	Estate of Peggy Patricia Delaney	
Estate of Gladys Williams	Estate of Percival Coates	
Estate of Graeme Hoskins	Estate of Peter Shiels	
Estate of Ian Lucas	Estate of Phyllis Rutzou	
Estate of Irene Ethel Colley	Estate of Raelene Kerr	
Estate of Irene Hunter	Estate of Reginald William Thompson	
Estate of Ivan Murray James	Estate of Richard Kearton	
Estate of Jane H Walker	Estate of Robert MacDonald	
Estate of Janice Clark	Estate of Robert Marriott	
Estate of Jean Lynch		
Estate of Joan Wallis		

TRUSTS AND FOUNDATIONS

\$150,000+

Jigsaw Foundation

\$100,000+

Children's Cancer Centre Foundation
Muriel and Les Batten Foundation
Sporting Chance Cancer Foundation
The Hugh D T Williamson Foundation
The William Buckland Foundation
Children's Hospital Foundations
Australia
Fight Cancer Foundation
My Room Inc

\$50,000+

H.T. Pamphilon Fund
Muscular Dystrophy Limited
The Baker Foundation
The Pratt Foundation
The Smith Family

\$20,000+

Brian M Davis Charitable Foundation
DEBRA Australia
Harold and Cora Brennen Benevolent
Trust managed by Equity Trust
J and H Knell Trust Fund
managed by Perpetual
Mattel Children's Foundation and
Philanthropy Programs
The Bell Charitable Fund
The Collier Charitable Fund
The Orloff Family Charitable Trust
Wishing Hearts

\$10,000+

Kilwinning Nominees
The Michael and Andrew Buxton
Foundation
The Stuart Leslie Foundation

\$5000+

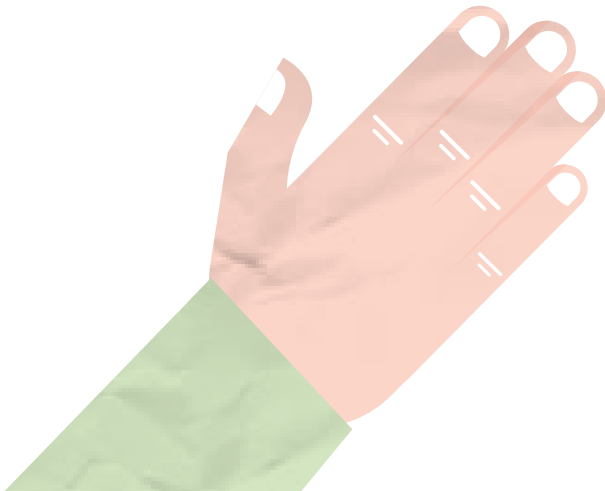
6A Foundation
AFA Foundation
C and T Park Endowment CEF
Management Account
Fortnum Foundation
Hislop Family Foundation
Neville and Di Bertalli, and Family
Clinical Neurosurgical Fellowship*
The Alfred and Jean Dickson Foundation
The Debbie Stach Memorial Gift Fund
The Fox Family Foundation
Victoria Law Foundation
Victorian Community Foundation Felice
Rosemary Lloyd Trust
Myer Stores Community Fund
Toybox International

** State Trustees Australia Foundation*

AUXILIARIES

For over 90 years Auxiliaries have supported the RCH. Today, over 60 Auxiliary groups are actively fundraising for the hospital.

ABC Auxiliary	Do-Bee's Auxiliary	South Western Auxiliary
Absent Friends Auxiliary	Ezy Breathing Auxiliary	Southern Rainbows Auxiliary
American Women's Auxiliary	Footscray Yarraville Juniors Auxiliary	Special Kids EBC Auxiliary
aRCHer's Auxiliary	Geelong Auxiliary	St Kilda Auxiliary
BEADS Auxiliary	Haemophilia Auxiliary (HAUX)	Strokidz Auxiliary
Beyond Sight Auxiliary	Hawthorn Auxiliary	Templestowe Auxiliary
Bright Starts Auxiliary	Heart Throb Auxiliary	Children's Brain Tumour Association
Brimbank Torch Auxiliary	Heart To Heart Auxiliary	Melbourne Sinfonia Auxiliary
Broadmeadows Auxiliary	Hidden Treasures Auxiliary	Trailblazers Auxiliary
Cancer Crusaders Auxiliary	Inverloch Diabetic Unit Auxiliary	VivaRCH Auxiliary
Cancer in Kids Auxiliary (CIKA)	Kooyong Lawn Tennis Club Auxiliary	Wangaratta Auxiliary
Cardiac Paediatric Research Auxiliary	Knox Sherbrooke Auxiliary	Waverley Auxiliary
Caring Friends of CF Auxiliary	LARCH	Werribee Ladies for Kids Auxiliary
Caroline Auxiliary	League of Former Trainees Auxiliary	Wrapped in Love Auxiliary
CasKids Auxiliary	Let The Children Play Auxiliary	Yellow Ribbon Kids Auxiliary
Caulfield Auxiliary	NeoNate Mates Auxiliary	Zipperchickey's and Friends Auxiliary
Charli's Angels Auxiliary	OARA	
Children's Flyer Fun Auxiliary	Pankina Auxiliary	
Chip In Auxiliary	Parkville Auxiliary	
Courage 4 Kids Auxiliary	Prembubs Auxiliary	
Cystic Fibrosis Research Trust Auxiliary	Roxburgh Park Auxiliary	
Dirty Hands Happy Hearts Auxiliary	Silver Rain Auxiliary	
Dorothy Waters Auxiliary	Smiley Auxiliary	



IN MEMORIAM

Saying goodbye is never easy, but leaving gifts in memoriam to the RCH Foundation is a meaningful way to pay tribute to a loved one who has passed away.

Throughout 2013/14, many families created a lasting legacy in tribute of a loved one, by requesting donations to the RCH Foundation in lieu of flowers. These donations are making a world of difference to children, adolescents and their families cared for by the hospital.

Abby Liora Binstock	Charlotte Paige Duncan	Fletcher Slater	James Wills
Abigail Taylor	Chloe Anne Mastin	Florence Hay	Jay Sykes
Ack Sing Louey OAM	Chrysoula Stefanidis	Fortunata Crisara	Jean Reid
Ada Casarotto	Claire Taylor	Francesco Curcio	Jeffrey Richard Wood
Adrian Trzcinski	Con Katsoulis	Frank James Colafella	Jett Mayor
Aglaia Psaras	Connie Checcucci	Gabrielle Anne Cobern	Jett Whitling
Alan John Croot	Constantinos Vayanos	George Arvanitakis	Joan Wright Seivers
Alison Rice	Coralie Mathews	George Clarence Hunt	Joanne Andronis
Alma Munro	Corrado Robert D'Ambrosio	George Sturt	Joanne Maher (Silvestro)
Anastazia Holmes	Daisy Glen Sullivan	Georgia Rose Sheehan	John Edwin Tremlett
Andrea Thomas	Dane Braddy	Giuseppe Spoto	John Farrell
Andrew Garrett	Daniel Horwood	Giuseppina D'Andrea	John Francis Pereya
Angela Pavlovic	Dante Renaut	Glenn Sinclair Rulach	John Tziouras
Anna Spirakou	Dean Lappas	Grace Cuming	John West
Annabel Louise Cuppins	Domenic Serrano	Graeme Rice	Joseph Horvath
Ante Putnik	Domenico Ciccone	Grazia Papa	Joyce Lavinia Alexander
Anthony Lontos	Don (Antonios) Londos	Graziella Failla	Judith Anne Peters
Anthony Paspas	Donald Ratcliffe and Phyllis Macleod	Gregory John Davies	Judy Peters
Antonio Attana	Dorina Perin	Harold Charles Brown	Judy Swanson
Antonio Ferraro	Dorothy (Dottie) McDonald	Harold Leslie Wash	Julie Banks
Antonio Lamberti	Edwina Margaret Chambers	Heather Burgess	June Jackson
Ari Devenie	Ekaterina Christakis	Helen Sash	Karl Miezi
Athanasia Kanathanasis	Eleanor McDonald	Helena Matheson	Katherine Lin
Benjamin James Marie	Elizabeth (Betty) Ramsdale	Henry Holmes	Kathleen Mary Lazaridis
Betty Emonson	Eloise Stephanie Gray	Hunter Ford	Kevin Edward Stevens
Beverley McDowell	Emily Louise Mizzi	Ian Morrison	Kevyn Penny
Billy Ford	Enid Margaret Cook	Jack Cooper Milward	Laurel Elliott
Boyd Diffey	Ernest Jackson	Jake Buchanan	Lauren Irvin
Carolina Ciaverella	Feliz Antonia Alonso	James Berias	Lauren Kimpton

Leah Barimah	Matthew Hogan	Sadie Richey
Leonard Del Mastro	Michelle Borg	Samantha Tan
Leone Fausto	Michelle Robins	Serafina Bellavia
Leroy Mills	Nancy McCasker	Sergio Roverato
Lesley Mary Anderson	Nicholas Giannatselis	Sid Fox
Letitia Breen	Nick Klingos	Simone Grace Mills
Logan Harry Biggs	Noah Felmy-Glas	Sophie Rose Sullivan
Lorenzo Nardella	Noel Maree (Marie Flannery)	Stanley Blamey
Lorraine Kapnoullas	Nondas Konstantinou	Stanley Charles Grunden
Luciana Weston	Norma Effie Riley	Steven George Davidson
Lucy Sarah Young	Norman Albert Free	Susie Grdovich
Luka Ćulina	Olivia Grace Sankey	Sylvie Jules Watty
Luke Sting Ian McKie	Olivia Imbesi	Theologos (Theo) Magoulas
Madeline Pascoe	Ormond Slater	Thomas Jones
Malvina Cecchin	Paolo Valvo	Tien Le
Margaret MacDonald	Phyllis O'Gorman	Tildie Franklin
Maria Antonello	Plutarch P Deliyannis	Trish Fry
Maria Chronopoulos	Ray Barfoot	Tullio Gorlin
Maria Clementina Albano	Raymond James Edwards	Umaraani Ganesamurthy
Maria Frederiks	Raymond Leslie Barker	Uwe Pruin
Maria Psaila	Reginald Clancy	Valerie Palmer
Maria Sutura	Resc Gates	Valma Blandy
Maria Typtos	Richard Robert (Bob) Stolp	Venera Fornito
Mario Di Natale	Robert Kostovski	Warrick Barrie (Rick) Deakin
Marjorie Bourne	Ronald (Ron) Frederick Hill	Wendy Powell
Mark Briskin	Rosalia Gringeri	William Torey
Mark Mundy	Rosario Lefali	Winifred Lucretia-Curry
Mary Aileen White	Rosina Harrison	Yvette Caldwell
Matdalini (Magdalene) Kentepozidis	Ruby Gotch	

IN CELEBRATION

Giving in Celebration to the RCH Foundation is a simple and personal way to celebrate any special occasion.

Over the course of the last financial year many generous supporters gave in recognition of birthdays, weddings, anniversaries, Bar Mitzvahs, Bat Mitzvahs and other special occasions.

Ad & Angela's 90th Birthday	Dylan Jack Smith's Celebration	Leo and Netty Kloate 60th Wedding Anniversary
Adithya Ganesan's 1st Birthday	Eli Raskin 60th Birthday	Leudi and Missy Topper's Birthday
Alexander Davatzis' Celebration	Ella Stiebel's Bat Mitzvah	Lexi Advani's 1st Birthday
Amber Berkowitz and Madelene Roth's Bat Mizvah	Elsie Schmidt's 1st Birthday	Lily Kennedy's 1st Birthday
Angus Hanson's 1st Birthday	Emily Vinh's 1st Birthday	Lorna Reed's 90th Birthday
Antonia Clarkin's 1st Birthday	Evie's 12th Birthday	Louie-ante Bagaric's 1st Birthday
Anvitha Ananth's 1st Birthday	Faith's 6th & Evan's 3rd Birthday	Luis and Gloria Gazzola's 50th Wedding Anniversary
Ariel Elbaum's Bar Mitzvah	Gabby Mehmedali's son's special occasion	Luke Rayner's Birthday
Asher and Raphael Epstein's 3rd Birthday	Gabriel and David Goodman's 2nd Birthday	Lukshmi Chauhan's Baby Shower
Asher Cohen's 3rd Birthday	Gabriel Liberman's Bar Mitzvah	Mali's 1st Birthday
Ava and Indiana D'Urso's Christenting	Gaby Amira's 70th Birthday	Mason's 1st Birthday
Baby Samson Latorre's Birth	Genevieve Lai's 8th Birthday	Maureen Hart's Birthday
Benji Gochin's 1st Birthday	George Bouzalas' Celebration	Max Humphris' Celebration
Bernard Olanda's Birthday	Georgia Fishman's Bat Mitzvah	Maxwell's 5th and Hugo's 3rd Birthday
Billie Carey's 1st Birthday	Gill Smith's 50th Birthday	Mia Field's 3rd Birthday
Billie Cassisi's Christening	Hannah Dean's 1st Birthday	Michael Gilboa's Bar Mitzvah
Blake Henshall's 1st Birthday	Jack Kelly White's 1st Birthday	Mikki Hofbauer and Jonathan Green's Engagement
Caitlin and Simone's 18th Birthday	Jaden Lam's 5th Birthday	Nadia Walland's 8th Birthday
Carson Carmona's 1st Birthday	James Bao's 1st Birthday	Natalie Brampton's Christmas Giving
Charlie and Matilda's 6th Birthday	Jason Rose's 40th Birthday	Natalie Gilmore and Keith McConnell's Wedding
Chloe Kennedy's 1st Birthday	Jesse Rorison's Celebration	Nicholas Dimitropoulos' Christening
Christine's Bridal Shower	Jo and Clint's Wedding	Nicholas Joel's Bar Mitzvah
Con Donchos' 60th Birthday	Jonathan Howell's 1st Birthday	Nutan Gallina's 50th Birthday
Cooper Messerle's 1st Birthday	Judah Slonim's Bar Mitzvah	Oliver's 1st Birthday
Danny Olesh 50th Birthday	Karen Del Castillo's 30th Birthday	Omar and Hannah's 8th Birthday
David Goodwin's Celebration	Kathryn Sanford's 50th Birthday	Paddy Ray's 1st Birthday
Dr Danny Mann Segal's Celebration	Kerin Wanstall's 65th Birthday	
Duilio Mauro's 80th Birthday	Lena's Baby Shower	

Patrick Harding's 1st Birthday
Paul & Meg Rivett's Wedding
Quade Naughton's 1st Birthday
Rachel Gold's Birthday
Rene Cook and Mia Kline's 10th Birthday
Ridha Shetty's Birthday
Rudy Baker's 2nd Birthday
Sahan Drover's 1st Birthday
Santina and Ian's Wedding
Shivam and Kshitij's Birthday
Simone and Chris Munro's Wedding
Siyana Rastogi's 1st Birthday
Sophie Green's Christening
Stuart Platon Davie's 1st Birthday
Tony and Lina Mattioli's 50th Anniversary
Trisha Kapur's Birthday
Trudy Gielen's 1st Birthday
Varsha Patki's Celebration page
Wesley's Baptism



get involved

CORPORATE GIVING



DONATE

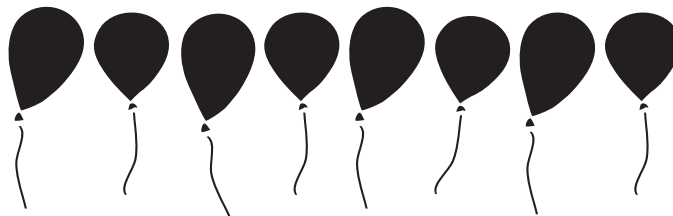


SHOP

www.giftshop.rch.org.au



HOST A FUNDRAISING EVENT



CONTACT US

*Interested in fundraising for The Royal Children's Hospital?
Please get in contact with us.*

The Royal Children's Hospital Foundation

Level 2, 48 Flemington Road
Parkville Vic 3052 Australia

P +61 3 9345 5037
rch.foundation@rch.org.au
rchfoundation.org.au

ABN 15 007 143 142

The Royal Children's Hospital Auxiliaries

The Auxiliaries are community groups established
across Victoria that raise funds for the hospital.

P +61 3 9345 6491
rchfoundation.org.au/auxiliaries
auxiliaries.office@rch.org.au

EXECUTIVE

Sue Hunt

Chief Executive Officer

Kerrie Rosewarne

Executive Assistant

FINANCE

Andrew Long

Business Manager

Christine Pickering

Management Accountant

Pranav Kaushal

Accountant

Lucia Di Maio

Reception / Office Administrator

GRANTS

Rachael Hurley

Grants Coordinator

COMMUNITY ENGAGEMENT AND FUNDRAISING

Katrina Wilkins

Head of Community Engagement and
Fundraising

Donna Aranyi

Community Fundraising and Hospital
Liaison

Lauren Stewart

Donor Development Manager

Ellie Pateras

Event Coordinator

Danielle Clark

Community Engagement Coordinator

COMMUNICATIONS

Jemma Altmeier

Communications Manager

Caitlin Smooker

Design and Publications Coordinator

Alicia Olive

Communications and Marketing
Coordinator

CORPORATE PARTNERSHIPS AND MAJOR GIFTS

Patrick Baker

Head of Corporate Partnerships
and Major Gifts

Fiona Ballantyne

Philanthropy Engagement Manager

Giovina Cicchitti

Corporate Engagement Manager

AUXILIARIES

Craig Wright

Auxiliary Coordinator

Caroline Duffield

Auxiliary Liaison - Events

Amanda Caldwell

Auxiliary Liaison - Administration

Monique Thomas

Auxiliaries Retail Liaison

CREDITS

Produced by: RCH Foundation

Photos: Education Resource Centre, Jo Duck Photography

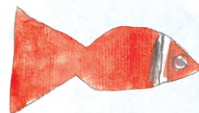
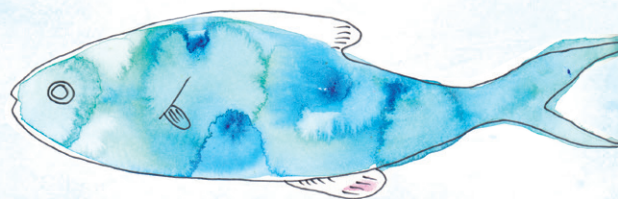
Sponsored by

K.W.DOGGETT Fine Paper

JO DUCK

We make every effort to be sustainable.







Join the conversation online

 [rchmelbourne](#)  [rch_foundation](#)