



THE IMPACT OF GIVING

SHARING THE TRANSFORMATIVE POWER OF PHILANTHROPY
2022/2023



The RCH Foundation acknowledges and recognises the Wurundjeri people as the Traditional Custodians of the land in which we are located. We respect all Aboriginal and Torres Strait Islander peoples and honour their cultural and spiritual relationships the land and water, and their rich contribution to society.

Front Cover: RCH patient Aaliyah, story on page 69

CONTENTS

The year in numbers	2
Thank you from the RCH Foundation	4
Farewell Sue	5
A message from the hospital	6
A message from the Good Friday Appeal	8

YOUR IMPACT

The impact of equipment and technology

Vital equipment to support the Children's Cancer Centre Biobank	10
---	----

Meet Jack	12
-----------	----

The impact of leadership, education and training

Leading the way in paediatric emergency medicine research	14
---	----

Meet Lucy	16
-----------	----

The impact of patient and family centred care

Celebrating 30 years of ChIPS	18
-------------------------------	----

Meet Bella	20
------------	----

Meet Felipe	22
-------------	----

The impact of research

Research program aims to create a brighter future for children with epilepsy	24
--	----

Meet Fraser	28
-------------	----

Philanthropically funded positions	30
------------------------------------	----

THANK YOU

Donor Rights	32
--------------	----

Individual Giving	36
-------------------	----

Thank you McDonald Family	38
---------------------------	----

The 1870 Society	40
------------------	----

Thank you Graeme and Penny Bentley	42
------------------------------------	----

Bequests	44
----------	----

Thank you Lennard Mulhallen	53
Endowments	54
RCH Foundation Managed Endowments	56
Thank you Rats of Tobruk Association	57
Trusts and Foundations	58
Thank you Sporting Chance Cancer Foundation	59
Thank you Jasmine Dindas	60
Thank you Ash Falla	61
RCH Champions	62
Thank you Fruci Family	63
In Celebration	64
In Memory	65
Bed Sponsorship	66
Thank you Tapanda	68
Thank you Ali Khan Family	69
Corporate Fundraising	70
Thank you K2LD Architects	71
Corporate Donations	72
Workplace Giving	74
Auxiliaries	76
Thank you Phyllis Brown	77
GOVERNANCE	78
Financials	80
Board of Directors	84
Committees	88
Staff	90
CONTACT US	91

THE YEAR IN NUMBERS

In the 2022/2023 financial year:

90,260

Emergency Department presentations

407,563

ambulatory appointments

\$68.6M

funds raised

200+

projects supported

14,963

surgeries

50,345

inpatient admissions



THANK YOU

Welcome to this year's Impact of Giving; a true testament to the power of philanthropy in driving innovation and advancing care at our world class children's hospital campus.

Thanks to your support, this year The Royal Children's Hospital (RCH) Foundation raised \$68.6 million and supported more than 200 projects across the RCH, the Murdoch Children's Research Institute (MCRI) and the University of Melbourne Department of Paediatrics.

Our commitment to funding clinical innovation remains a key focus. This includes supporting the Children's Cancer Centre Biobank to purchase a new freezer and cryogenic unit, providing a crucial resource for advancing cancer research and improving diagnoses and treatment, through to trialling virtual reality to help manage patients' pain and distress.

We also continue to fund roles which help keep the RCH at the forefront of excellence, supporting 30 leadership, fellowship and scholarship roles in endocrinology and diabetes, nursing development, burns management and psychology, to name a few.

Other highlights this year include the 30th anniversary of Chronic Illness Peer Support (ChIPS) Program, 101 years of exceptional community fundraising by the RCH Auxiliaries and another record year for the Good Friday Appeal, reminding us that every donation from every corner of Victoria counts.

As always, patient stories bring home the importance of our impact. From children with epilepsy, like Fraser, who will benefit from rapid genome sequencing, to Lucy, whose participation in Bell's palsy research will benefit other children into the future, every dollar you generously give is helping children in Victoria and beyond.

Our supporter stories are also inspirational, including multi-generational giving by the Mulhallen family, who support Cancer in Kids Auxiliary (CIKA) and whose father and grandfather, Len, generously left a Gift in his Will.

Another outstanding example of long term support is the McDonald family, whose connection with the RCH spans 80 years, commencing with the meeting and marriage of an anaesthetist and theatre nurse, and continuing with an invaluable donation by the family's daughters these many years later.

It's these stories of the how and why behind our fundraising and philanthropic success which really matter, because this is where the stories of our donors and supporters come to life.

You give because you are moved by the personal stories of children and families facing their toughest times, and because you support our belief that by advancing the future of paediatric excellence, we can transform lives now and for generations to come.

It is this shared commitment that has propelled our outstanding results, and which will continue to allow us to support hundreds of projects and people across the campus, bringing innovation, excellence and comfort to thousands of children, young people and families every year.

Thank you for your dedicated support.

Sue Hunt AM
Chief Executive Officer

Richard Leder OAM
Chairman



Sue Hunt AM, Chief Executive Officer, the RCH Foundation

FAREWELL SUE

After 13 years of dedicated service, Sue Hunt AM has announced that she will step down from the role of Chief Executive Officer in March 2024.

In her time as Chief Executive Officer, Sue has transformed the RCH Foundation. Sue's leadership drove income growth and established vital grants that attracted innovation and leadership to the RCH and the Melbourne Children's Campus. Her trusted management and philanthropic efforts have connected donors and fundraisers to the cause and impacted every sick child at the hospital.

From patient and family centred support initiatives, such as the Complex Care Program, to transformational equipment such as the IMRIS, and from future looking research projects such as GenV and development programs for young researchers, to whole of Campus initiatives, such as the Centre for Health Analytics, under Sue's leadership the RCH Foundation has been a true partner in changing the future of children's health.

Her legacy can be found in her loving stewardship of the RCH Foundation and its supporters through the opening of the new hospital, growth and change in the philanthropic sector, the COVID-19 pandemic, the RCH's 150th birthday celebrations and 100 years of the RCH Auxiliaries, changing technology and legislation, and the success of the Melbourne Children's Campus as a whole.

On behalf of the RCH Foundation Board and staff, the RCH Board, Executive and staff, and the senior members of Campus Council, the MCRI and the University of Melbourne Department of Paediatrics, I would like to thank Sue for her dedication, professionalism, wise counsel, and considerable contribution to the success of the RCH Foundation over the past 13 years.

Thank you, Sue.

Richard Leder OAM
Chairman



A MESSAGE FROM THE RCH

It has been another eventful year at the RCH, and on behalf of our patients, families and staff I want to thank you all for your continued support for everything we do.

Your contribution helps to make the RCH so much more than just a hospital. Because of you, we can give all children and young people the same opportunity to realise their potential in life.

Your generosity means our patients have access to cutting edge treatments, equipment, and facilities they may not find anywhere else in Australia. It also allows us to attract the best and brightest health professionals from around the world and cultivate a workforce that reflects the community we serve.

On behalf of all our patients, their families and all of us at the RCH, I want to say a heartfelt thank you.

While the immediate pressures of the COVID-19 pandemic may have eased, 2023 still had its challenges. Across the community, families are facing enormous financial pressures in their day to day lives – which is why I am even more grateful for your ongoing support of the RCH Foundation.

Thanks to your assistance, we can continue to put children and young people at the heart of everything we do – and strengthen our ability to deliver the safest, most accessible, playful and kid-centred care in the world.

Funding from the RCH Foundation enables us to be Australia's leading paediatric trauma centre. Your support funds our Professor of Paediatric Emergency Medicine, who leads critical research for the Emergency Department. Research and learning are the foundation of all the very best care – and your support helps to make that happen.

Philanthropy allows us to be at the forefront of clinical innovation. Thanks to your support, the Children's Cancer Centre Biobank now has access to a new ultra-cold -80°C freezer and cryogenic unit to store patient samples for molecular testing and world leading clinical trials.

Your generosity continues to have a direct and positive impact on our patients. Through the funding of our Clinical Scientist Fellowships, staff at the RCH get the opportunity to combine their clinical experience with research and improve outcomes for all in our care.

It also funds programs like the Chronic Illness Peer Support (ChIPS) program. Now in its 30th year, ChIPS creates opportunities for young people living with chronic illness to share their experiences with one another and connect through social activities ranging from mini golf to visits to Scienceworks.

These are just some of the ways your support makes a tangible difference to the lives of our patients.

I would also like to acknowledge the amazing RCH Auxiliaries who work tirelessly all year round to raise funds for our hospital. Their daily stalls on Main Street bring joy to families, visitors and staff alike, and I know the quarterly markets are a highlight on my calendar and many others.

I would like to particularly acknowledge Sue Hunt AM, who is stepping down next year from her role as Chief Executive Officer of the RCH Foundation after an incredible 13 years at the helm. Sue has demonstrated unwavering commitment to strengthening how we deliver care, research and learning at the RCH with the support of philanthropy. The RCH Foundation has grown tremendously under her leadership, and she will be dearly missed.

Whether your contribution was big or small, I cannot thank you enough for everything you do to support us here at the RCH. We are truly humbled every day by the difference your contribution makes to our care.

Thank you for helping us create a world where all kids thrive.

Bernadette McDonald
Chief Executive Officer,
The Royal Children's Hospital



Bernadette McDonald with Kelly Light, 2023 Scholarship recipient; Tiffany Lucas, President, the RCH Auxiliaries; and Sue Hunt AM, Chief Executive Officer, the RCH Foundation at the 2023 Dame Elisabeth Murdoch Nursing Development Scholarship Luncheon

Bernadette McDonald with Professor Michael Cheung, Director of Cardiology, the RCH; Alisa and Oliver Camplin-Warner, Finnan's Gift Co-Founders; and Sue Hunt AM





Faces of the 2023 Good Friday Appeal, Arlo and Aru

A MESSAGE FROM THE GOOD FRIDAY APPEAL

In what was an extraordinary effort and a fantastic example of generosity and goodwill, the community united once again for the 2023 Good Friday Appeal to raise a remarkable \$23,061,320 for the RCH.

OUR COMMITTED FUNDRAISERS AND VOLUNTEERS

Kids are at the heart of what we do, and this year, kids supported kids through Generation Give. There were over 400 schools involved, and leading the way was the Elisabeth Murdoch College with their fifth iCAN Challenge that involved four Langwarrin schools walking 50km from St Kilda to Frankston, raising an incredible \$225,643.

There were many other creative fundraisers including Shear for the Kids, with over 40 shearers donating their wages as they sheared 700 sheep. Meanwhile, The Good Clan gaming campaign, including CripsyTV and other gamers, raised over \$40,000 for the ChIPS program, which supports young people with chronic illnesses at the hospital. The RCH Auxiliaries in their 101st year continued their commitment and passion in their year round fundraising efforts to raise an outstanding \$1.39 million.

The community across country Victoria provided significant support to raise over \$4.5 million regionally. Thank you to all the Area Managers who championed their local communities, many of whom were from the Country Fire Authority (CFA), which also raised \$1.6 million, along with Uncle Bobs Club and Pied Pipers.

Thanks also to our longstanding collection groups, with Aviation Rescue providing 30 years of support, and the German Shepherd Club providing 40 years of support, and to the thousands of volunteers who worked tirelessly door knocking, rattling tins and assisting in many roles to make the Appeal happen.

OUR GENEROUS PARTNERS

Our Principal Partners, Herald Sun and Channel 7, were instrumental in sharing the life changing stories which demonstrate the impact of the community's support, including Seven's entertaining telethon. Other media partners included Ace Radio Network, Nova, Smooth FM, NEP Studios, QMS Media and 3AW. Thank you all for inspiring the community to give.

\$23,061,320

RAISED BY THE 2023 GOOD FRIDAY APPEAL



Penny Fowler (left) and Rebecca Cowan (right) with Sue Hunt AM, Chief Executive Officer, the RCH Foundation; Bernadette McDonald, Chief Executive Officer, the RCH; and Dr Rowena Coutts, Chair, the RCH Board

Once again we saw many businesses, large and small, give back including: Woolworths, who raised \$1.36 million through round up and donations in stores; Bambi Mini Co, donating the proceeds from their sock range sold in Chemist Warehouse stores; Hunky Dory, donating \$1 from every potato cake sold; and Telstra, for continuing their support of the phone room, which received thousands of donations.

The Charity House, generously donated by Henley in their 31st year of support, and the land, thanks to Villawood in their 14th year of donating, raised \$1.01 million. This wouldn't have been possible without the support of their teams, trades and all their suppliers. We would also like to thank Costco, Cadbury, Decjuba Foundation, Little Athletics, Visy, City of Melbourne and raffle partners Mazda, Majestic Caravans, Inspiring Vacations, Tempur, Qatar Airways, Woolworths, Kogan and Telstra for their support.

Our much loved events continued to connect the community. Kids Day Out had 102,000 visitors enjoying the rides, entertainment, sports and the popular Teddy Bear Hospital, all hosted at the Melbourne Convention and Exhibition Centre. Run for the Kids saw thousands of participants pound the pavement over the Bolte Bridge to raise \$1 million – thanks to the generosity of the Herald Sun, Transurban and everyone involved.

Sport fans supported the Appeal and their favourite codes through the AFL SuperClash game with North Melbourne hosting Carlton, Melbourne Storm dedicating their game, Racing Victoria with the All Star Mile and Country Racing in Geelong, Greyhound Racing Victoria, VRC and Ice Hockey, with Melbourne Ice and Melbourne Mustangs showing their support.

A HEART WARMING THANK YOU

The Good Friday Appeal has now raised \$444 million since 1931. Thank you for your incredible generosity and support. You have helped to create one of the best children's hospitals in the world, highlighting that every dollar donated makes a difference.

And lastly, on behalf of the Good Friday Appeal Board, team and community, we extend our sincere thanks to Sue Hunt AM for her support and passion over the last 13 years. Sue has championed the support of donors to raise significant funds which has helped provide life-saving care for sick kids at the RCH. Thank you, Sue.

Penny Fowler

Penny Fowler,
Chairman,
Good Friday Appeal

Rebecca Cowan

Rebecca Cowan,
Executive Director,
Good Friday Appeal

**YOUR
IMPACT**





THE IMPACT OF EQUIPMENT AND TECHNOLOGY

The RCH Foundation supports the purchase of life changing equipment specifically designed for children and adolescents.

Thanks to our donors, the following initiatives were supported in 2022/2023.

Supporting the **leasing and maintenance** of cars as part of Early Childhood Intervention Services

Tracking real time status and performance for Laboratory Services and hospital-wide Point of Care analysers

Purchasing equipment to **support infant resuscitation and care**

Planning a new model of care for high risk respiratory patients

Supporting **organism identification systems** in clinical laboratories

Utilising new genetic testing technologies for childhood tumours to obtain faster diagnoses and guide specific treatments

Upgrading Gait Lab technology, including ten infra-red strobe cameras that capture the child's walking patterns in 3D

Improving patient care **through the purchase of new ultrasounds** for the medical imaging department

Implementing a standardised communication platform at the RCH to enable all clinical and non-clinical communication to be sent to clinicians' handheld devices

Enhancing provision of **specialised equipment and respite care for children with life limiting conditions** and their families

234

PIECES OF EQUIPMENT FUNDED

\$2,882,530

INVESTED IN EQUIPMENT AND TECHNOLOGY
IN 2022/2023

20

GRANTS FOR EQUIPMENT
AND TECHNOLOGY

Purchasing **equipment to measure intracardiac and arterial blood pressures** during exercise in adult survivors of complex congenital heart disease

Enhancing the skills of clinicians by purchasing **equipment for staff training programs**

Providing **vital and cutting edge medical equipment**, including upgrades, to deliver excellent care across the hospital

Creating **positive experiences for parents and babies within the Newborn Intensive Care Unit (NICU)** through the purchase of supportive tools and equipment including baby activity mats, gyms and mobiles

Purchasing a -80°C **freezer to store patient samples** required for standard of care molecular testing and participation in clinical trials

Reducing stress and anxiety for children undergoing needle treatments through the **use of virtual reality devices**

Trialling the **use of a virtual reality device** as a distraction and calming therapy for patients in the Emergency Department

Enabling the purchase of **equipment to ensure best practice training and development opportunities** for clinicians

Purchasing an **electron microscope** to be used for the diagnosis of disease



Dr Louise Ludlow, CCC Biobank Coordinator

VITAL EQUIPMENT TO SUPPORT THE CHILDREN'S CANCER CENTRE BIOBANK

In the world of paediatric cancer research, a freezer at -80°C isn't just a machine; it's a hope in the fight against childhood cancer.

At the RCH, the Children's Cancer Centre (CCC) Biobank is a specialised facility dedicated to the collection, preservation and management of biological samples obtained from patients. These samples are a crucial resource for advancing research and improving the diagnosis and treatment of paediatric cancer.

The collected samples are stored under extremely low temperatures. This includes freezing them at -80°C.

Thanks to philanthropy, the CCC Biobank has been able to purchase a new -80°C freezer and cryogenic unit, enabling them to stay at the forefront of biological sample storage and management, and ensuring the preservation of valuable research materials for generations to come.

"This equipment allows storage of samples required for ethically approved research projects including clinical trials and translational research projects.

"New research discoveries are only possible using samples of sufficient integrity; therefore, the freezer and cryogenic unit are essential for operation of the Biobank," said Dr Louise Ludlow, the CCC Biobank Coordinator.

The CCC Biobank plays a pivotal role in supporting cancer research efforts. Scientists and researchers rely on these samples to investigate the causes of cancer, develop new treatment strategies, and minimise the side effects of existing therapies.

In her role, Louise provides samples and related health information to scientists not only in Australia but worldwide. This vital work enables researchers to make groundbreaking discoveries, find better cancer treatments, and reduce the harmful side effects of cancer therapies.

"Advances in patient care rely on many factors, but the procurement of samples obtained in the operating theatre or in the clinic during the course of clinical investigation and treatment is crucial," Louise shared.

"The CCC Biobank is a resource for diagnostics and discovery. From a diagnostic perspective it allows for further testing to be done without the need for repeat patient samples or procedures.

"From a discovery perspective, the CCC Biobank has supported 44 translational research studies covering a wide range of tumour types and methods."

Louise shared a vision for medical advancements that is rooted in the CCC Biobank's mission and the impact it has on young cancer patients. She hopes for better treatment options, more years of life saved, and an improved quality of life.

"Our Biobank directly benefits every child and adolescent diagnosed with cancer at the RCH."

"Investigation into rare childhood cancers in the past has been limited due to paucity of biological material, and data from trials. This highly vulnerable group of children, with limited treatment options and potentially poor prognosis, including severe long term side effects from treatment, will have the greatest benefit."

She also emphasised the importance of continued collaboration between the CCC Biobank, oncologists, and translational research scientists. This collaboration fosters

the sharing of information and data, and promotes the development of new technologies.

"The existence of our Biobank is central to the capacity to remain research active and nationally and internationally embedded in cancer research including cutting edge clinical trials."

Over the years, Louise has transformed the CCC Biobank into one of the largest and most respected of its kind. This remarkable achievement has been made possible through the support of the RCH Foundation and the Cancer in Kids Auxiliary (CIKA).

"The support and donations from CIKA are integral to advancing research into paediatric malignancy. The contribution of these samples to our national and international scientific research community and to our patients is immeasurable. We are extremely grateful that this funding of essential equipment allows us to operate in alignment with international biobanking standards," Louise shared.

"This equipment is essential for making new discoveries to cure cancer and to prevent the late effects of therapy. We are extremely grateful for the relentless and tireless work performed by CIKA to achieve these outcomes for our patients."



OUR BIOBANK DIRECTLY BENEFITS EVERY CHILD AND ADOLESCENT DIAGNOSED WITH CANCER AT THE RCH.

Dr Louise Ludlow, CCC Biobank Coordinator



Dr Louise Ludlow working with specimens in the CCC Biobank

MEET JACK

In late 2021, during the heart of the COVID-19 pandemic, what looked like harmless bug bites turned out to be a devastating diagnosis for Jack – leukaemia.

“On his third birthday, we found out what was going on. That night, he got a flare up on his feet and hands – they got really red and swollen,” Jack’s mum Jemma and dad Nick shared.

“I had a blister on my toe!” Jack said.

Once he received his diagnosis, Jack underwent a bone marrow transplant, which saw him stay at the RCH for almost three months, and had seven days of infusions every 28 days. In total, he has endured twelve rounds of chemotherapy.

As part of his treatment, Jack’s samples were also collected and stored at the CCC Biobank. These samples became an essential part of ongoing clinical trials and studies, helping to uncover new therapies and diagnostic tools that may benefit not only him but also countless other children facing similar challenges.

Jack is now in remission, and Jemma and Nick are grateful for the crucial role the support system at the RCH played in helping Jack and his family navigate these trying times.

“The nurses were really good. They got to know Jack, and we got to know them. He knew a lot of their first names. Whenever we weren’t there, Jack would hit the buzzer to call the nurses and have a chat with them,” Jemma and Nick shared.

Music therapy and art therapy became one of the best parts of Jack’s hospital experience. Tilly and Lauren, his therapists, helped him find comfort in creativity.

“One of the first visitors he had in the room was music therapy and we hadn’t seen him so animated and happy since we had been there. It was so great seeing him so involved and excited about something,” recalled Jemma.

The kindergarten program also fostered a sense of normalcy during Jack’s hospital stays.

“Jack loved the kinder program. And it was important that he wasn’t missing out on that kinder time. For around eight months he wasn’t allowed to go to his daycare, so it was good he wasn’t missing out while at the hospital,” Jemma said.

One of Jack’s favourite memories at the hospital is exploring the wards. “I liked leaving my room!” he said.

“Jack really enjoyed running up and down the ward and being able to look out the windows. Once he was out of the IV drip and feeding tube, as he got healthier, he also got crazier and crazier!” Jemma and Nick shared.

Attending appointments is no longer a daunting experience for Jack.

“He’s always got questions about whether it’s a blood test day – the finger prick gets him a bit nervous. But he’s pretty brave. He also knows that there’s always someone there handing out something for him! He doesn’t mind going to the hospital – it’s usually a Daddy and Jack adventure day because we go to the park too,” said Nick.

Jack’s family express their heartfelt gratitude to all the amazing individuals who have supported the RCH.

“Thanks to the people who support the hospital – there’s so much there that is donated. We were there around Christmas time, and Jack got asked what he wanted for Christmas and he was in his Rapunzel phase, so they brought him one for Christmas. It was really nice and made it special – it really took our mind off the negative stuff and made it as normal as possible. We were really grateful for that!” Jemma and Nick shared.



Jack at the RCH



Jack with mum Jemma and dad Nick



Jack engaging in art therapy at the RCH

“ ”

WE HADN'T SEEN HIM SO ANIMATED AND HAPPY SINCE WE HAD BEEN THERE. IT WAS SO GREAT SEEING HIM SO INVOLVED AND EXCITED ABOUT SOMETHING.

Jack's mum, Jemma

THE IMPACT OF LEADERSHIP, EDUCATION AND TRAINING

The RCH Foundation supports the purchase of life changing equipment specifically designed for children and adolescents.

Thanks to our donors, the following initiatives were supported in 2022/2023.

Supporting staff to **attend professional development and conferences**

Ensuring clinicians across the RCH are comprehensively trained in the **Point-of-Care Ultrasound Program**, empowering them to conduct ultrasounds at a patient's bedside

Embedding allied health research into clinical practice on campus by building allied health research capacity, promoting allied health research leadership and providing mentorship to improve child health

Developing an organisation wide program to build a **positive workplace culture through the RCH Compact**

Delivering paediatric education through the **Education Outreach Program for Allied Health and Nursing professionals**

Supporting the **Children's Bioethics Centre** to provide clinical ethics services across the RCH campus

Developing the **Centre for Health Analytics** to become an internationally leading paediatric centre in the use of health data to improve all aspects of care, operations and research

Promoting excellence in patient care, safe clinical practice and education for RCH campus staff and community healthcare workers through **the Simulation Program**

103

RCH STAFF COMPLETED PROGRAMS WITH THE LEADERSHIP ACADEMY

\$14,127,903

INVESTED IN LEADERSHIP, EDUCATION AND TRAINING
IN 2022/2023

17

GRANTS FOR LEADERSHIP,
EDUCATION AND TRAINING

Appointing an Education Officer position, as part of the **ethics education program**

Rebuilding a **skilled and flexible paediatric nursing workforce**

Supporting the families and carers of children with plagiocephaly and torticollis by **creating educational videos**

Enhancing collaboration and coordination in research between the **Children's Cancer Centre and the MCRI**, by bringing together clinical and applied research into one unified and sustainable framework

Providing ongoing support for an **education hub on the Melbourne Children's Campus**, which aims to increase collaboration, upskill educators and enhance the delivery and use of technology

Supporting the delivery of an **ongoing education and professional development** program for Allied Health and Nursing staff

Supporting educational activities within the **Children's Bioethics Centre**, including professional development and formal education programs for staff

Implementing a framework and objectives to deliver a strategic, well designed and purposeful **leadership development journey**

Building a strategic, coordinated and sustainable model to enable **awardees of the Robert Connor Dawes Foundation Travel Grant to access funding**

LEADING THE WAY IN PAEDIATRIC EMERGENCY MEDICINE RESEARCH

The RCH's Emergency Department (ED) sees over 90,000 patients a year, with conditions ranging from broken bones and burns to heart failure and head wounds. As the largest paediatric Emergency Department in Australia, not only does it help sick and injured children, it's also supporting world leading research.

Thanks to the generosity of the community, the RCH Foundation has helped harness this power by funding a dedicated Professor of Paediatric Emergency Medicine in the University of Melbourne's Department of Paediatrics.

The aim? To improve the evidence base of acute and emergency care in children and young people.

Professor Franz Babl was appointed to the position in 2017. Based at the RCH, Franz's role is to initiate and oversee acute care research, often in collaboration with other clinical and research teams onsite at the Melbourne Children's Campus.

"For years, even decades, critical research issues in children and young people were put into the too hard basket. Because of this, there is much less evidence on the optimal management available in children and young people compared to many emergency conditions in adults.

"The white spots on the map are getting smaller but there are still many diseases and injuries children present with where we can do better. The focus of my research effort is to tackle some of these issues in the too hard basket," said Franz.

Over the last five years, Franz's role has helped position the Melbourne Children's Campus as a leader in paediatric emergency medicine research.

The department has generated substantial new knowledge, contributing to more than 200 publications over the past five years. These include top tier journals such as New England Journal of Medicine, The Journal of the American Medical Association and The Lancet.

Franz has also leveraged his position to obtain a further \$35 million in project grant funding.

More than that, the role has led to substantial improvements in patient care at the RCH and beyond. In one example, Franz and his team looked at patients presenting to the ED with relatively mild head injuries.

"We see hundreds of children a month with head injuries. In children with more severe injuries, the decision to do a CT scan of the head is easy and we know in a few minutes if there is a bleed inside the head or not," explained Franz.

"But what about the rare children who have a less severe head knock yet go on to have a bleed inside the head? We simply cannot do CT scans on all of these children with mild injuries because CT scans come with radiation exposure, which in turn can lead to a small increase in the risk of cancer.

"So, we needed guidance for clinicians to indicate which combination of signs and symptoms in children with seemingly mild head injuries are at low risk and can forgo a CT scan, and which ones are at a higher risk where they need to be observed for a period of time or have a CT scan," he added.

For this project, and for many others, Franz's research team needed a very large cohort of patients – more than what presented to the RCH. Thankfully, the hospital is a founding member of a research network called PREDICT.

PREDICT, short for the Paediatric Research in Emergency Departments International Collaborative, is a network of all tertiary children's hospital emergency departments and many of the emergency departments at the larger mixed emergency departments in Australia and New Zealand.

Through PREDICT, Franz and his team were able to look at 20,000 children across 10 hospitals and clarify what rules clinicians should use to optimise the use of observation and CT scans without missing any significant hidden injuries. These findings have now been incorporated into national and regional head injury management guidelines and into acute and emergency care across the country.

For Franz, the key aspect of being Professor of Paediatric Emergency Medicine has been the positive impact he has had.

"This role has given me an amazing privilege to have a positive impact on the frontline care of many children across many hospitals, rather than looking after just one injured or sick child at a time.

"Probably just as important has been the opportunity of being involved in growing the next generation of clinicians and clinician researchers," he said.



Emergency



Professor Franz Babl, Professor of Paediatric Emergency Medicine

“ ”

THE FOCUS OF MY RESEARCH EFFORT IS TO TACKLE SOME OF THESE ISSUES IN THE TOO HARD BASKET.

Professor Franz Babl, Professor of Paediatric Emergency Medicine

MEET LUCY

Seventeen year old Lucy is no stranger to the RCH ED. She's been seen for broken bones, tonsilitis and most recently, a dislocated knee. But in December 2019, Lucy faced her scariest ED visit.

A few days before Christmas, while the family was eating dinner, Lucy turned to her mum Helen and said the unthinkable, "Mum, my mouth isn't working properly. I can't chew and my lips feel funny."

"The first thing that went through my head was that my kid is having a stroke," said Helen.

"Just looking at her you could see there was a bit of distortion in her mouth, so we started asking her questions like 'What day is it?' to see if she could understand.

"Suddenly, my husband pulled me aside. He was sitting opposite her and could see that she couldn't blink her left eye. He said it looked like her whole left side was just frozen," she added.

Helen took Lucy straight to the RCH ED where they were quickly triaged and seen by a doctor who ran a series of tests, including asking Lucy to blow like she was blowing up a balloon. She couldn't do it.

"It was a very scary moment for us and for Luce, but from the moment we arrived the staff were fantastic. We're still grateful for that," said Helen.

Five minutes after completing all the tests, the doctor confirmed Lucy had Bell's palsy, a reasonably common condition in children that affects the muscles in the face.

"We were so relieved. We knew a few people who had been diagnosed with Bell's palsy, so while it was really distressing, particularly for Luce, we were so glad it wasn't anything more serious," Helen recalls.

Lucy was kept in the ED for a few hours for observation and by the end of the night her face was in full paralysis.

"Even though we knew everything was going to be okay we were still full of questions – how long is it going to last, is it going to get better? And Lucy was 13 so she was asking those questions too.

"She is also a singer and was due to compete in a national competition a few weeks later. So for her, it was also distressing because she was worried that she was going to lose that part of herself," said Helen.

While they were in the ED, a doctor approached Helen and asked if Lucy might like to be involved in a research study about Bell's palsy in children.

"Lucy said yes straight away. In her eyes, if it could help somebody else, she was happy to be a part of it," said Helen.

The study, also known as BellPIC or Bell's palsy in Children, was led by Professor Franz Babl, Professor of Paediatric Emergency Medicine. Made possible thanks to philanthropy, Franz's role is to initiate and oversee research in the ED, leading to better outcomes for children and young people.

The study ran in 11 hospitals across Australia and New Zealand, including the RCH. It investigated the use of steroids in the initial treatment of Bell's palsy for children.

"There was clear data in the literature that steroids help in adult patients with Bell's palsy to increase recovery of their facial function. But, in children there was no similar high quality information available – it had been in the too hard basket for a long time," said Franz.

"We needed lots of children and adolescents to participate and track them over a long period of time to confirm if steroids worked or not. The main result of the BellPIC study was that children with Bell's palsy recover at a very high rate even without steroids," he added.

As part of the study, Lucy was provided medication to take, followed by a number of check ups in the weeks and months following her diagnosis. Thankfully for Lucy, her muscles returned to normal around six weeks after her initial presentation to the ED, and four years on from the experience she is thriving.

Helen expressed enormous gratitude to everyone who has supported the RCH philanthropically.

"To have people outside of the hospital who are committed to giving so that children and families like ours receive the very best care and the very best knowledge, it's just invaluable."



Lucy at the RCH

“ ”

IN HER EYES, IF IT COULD HELP SOMEBODY ELSE, SHE WAS HAPPY TO BE A PART OF IT.

Lucy's mum, Helen

THE IMPACT OF PATIENT AND FAMILY CENTRED CARE

The RCH Foundation wholly supports the hospital's philosophy of using and developing innovative models of patient and family centred care. This ensures that patients receive the very best care, and that their families are recognised as instrumental in the process and included each step of the way.

Thanks to our donors, the following initiatives were supported in 2022/2023.

Building resilience and support for patients in the Neurology and Rehabilitation Departments through **music therapy**

Supporting an administration position within the **Neuromuscular Clinic** to help streamline appointments for patients with muscular dystrophy

Building resilience and support for adolescent patients through **music therapy**

Delivering **ongoing care to families who have transitioned out of NICU** with follow up sessions to track the progress of their child's development and identify issues for treatment

Enhancing the parent-child relationship through **oral language experiences**

Alleviating the stress and anxiety of hospitalisation on patients and their families through **RCH TV programs**

Providing positive procedural support and experiences for patients through educational **Child Life Therapy**

Providing creative outlets for children undergoing cancer treatment with the **art therapy program in the Children's Cancer Centre**

Supporting the position of **Children's Cancer Centre Solid Tumour Study Coordinator**

Supporting the position of **Children's Cancer Centre Liquid Tumour Study Coordinator**

Ensuring children from regional areas can access services closer to home by **educating and upskilling clinicians in regional centres on paediatric care**

\$10,321,103

INVESTED IN PATIENT AND FAMILY CENTRED CARE
IN 2022/2023

45

GRANTS FOR PATIENT AND
FAMILY CENTRED CARE

Measuring parental attitudes, experiences and priorities on health issues and trends for Australian children to inform public discussion and promote RCH leadership through the **RCH National Child Health Poll**

Improving outcomes for children with heart disease by increasing access to clot busting treatments and the implementation of state wide protocols to rapidly diagnose stroke

Coordinating a **complex care and transition program for patients with epidermolysis bullosa**, a group of rare and debilitating genetic conditions that result in blistering of the skin and mucous membranes

Enhancing patient experiences with the development of the **music therapy program** in the Children's Cancer Centre, Paediatric Intensive Care Unit (PICU), and the Cardiac and Palliative Care Units

Developing and enhancing ChIPS, the **peer support program for young people living with a chronic illness**

Creating further clinical positions within the Children's Cancer Centre to support the **Comfort First Program**, which aims to reduce pain and distress associated with cancer treatments

Providing cancer patients and families with **practical and emotional support during inpatient stays or visits** to the Children's Cancer Centre

Supporting the implementation of **COCOON**, a specially designed patient-centred, family-integrated, baby-led model of care in the NICU

Continuing to **provide therapeutic group work** in the community to children and families who display challenging behaviours or have a history of family violence

Upskilling staff to improve timely access to **enteral feeding pump training** for families prior to discharge

Providing a paediatric screening program for patients with Type 1 diabetes through the appointment of a **Diabetes Complication Screening Nurse**

Supporting burns patients and their families, and educating staff on specialised treatment, with a dedicated **burns nurse coordinator**

THE IMPACT OF PATIENT AND FAMILY CENTRED CARE

Supporting patients with disorders related to **hormonal dysfunction or physical development** through an endocrinology nurse position

Supporting the **Fertility Preservation Service** to ensure patients who undergo cancer treatment have the ability to receive fertility preservation procedures in adulthood, if required

Providing a **music therapy program** for young people with mental health and psychological conditions on the Banksia Ward

Providing support and engagement for patients **undergoing inpatient treatment** for mental health, and their families

Providing emotional, social and cultural support to Aboriginal and Torres Strait Islander children and their families who use the hospital by funding the **Wadja Aboriginal Family Place**

Ensuring the RCH is **delivering best quality and accessible mental health care for patients and families** across the campus by resourcing, training and project funding for mental health programs

Establishing a virtual care platform and leveraging virtual care technologies to **enable the delivery of clinical care remotely**

Enhancing care and support for children and adolescents with autism and intellectual disability through the appointment of a clinical nurse

Ongoing support for the apheresis service, which involves the filtering and removal of blood components to have potentially life saving impacts, including a renewed focus on gene therapy

Comprehensive cancer care for children and adolescents, which incorporates holistic aspects including psychosocial, financial, mental health and wellbeing, as well as educational and vocational needs

Funding for customised pressure garments for **burn scar management for patients**

145

PATIENTS SUPPORTED BY THE CHILDREN'S
CANCER CENTRE ART THERAPY PROGRAM

MUSIC THERAPY SUPPORTED

4,000

PATIENTS ACROSS THE HOSPITAL

Trialling the use of a **virtual reality device** pre-operatively, as a distraction and calming therapy for patients undergoing surgery and procedures

Improving evidence based care provided to **children with severe acquired brain injuries** whilst in hospital

Improving care and clinical outcomes for **trauma patients** through improved communication, education, risk reduction and enhanced positive experiences for patients, families and staff

Supporting the ongoing expenses of the **Magnetic Resonance Positron Emission Tomography (MR PET) service**, which gives patients access to the latest technology in medical imaging

Embedding student wellbeing practices into the **RCH Education Institute**

Supporting allied health staff to care for children with complex colorectal conditions and their families, including a **Child Life Therapist, Dietitian and Continence Physiotherapist**

Supporting the **garden program**, an initiative to provide patients with an outdoor environment that helps to diminish the negative effects of hospitalisation

Developing a strategy for **management of complex patients with severe cerebral palsy and other neurological problems**

Providing support, education and treatment for **children with severe acne**

Supporting the **Diabetes Camp** for children with diabetes

Supporting the addition of a disability identifier in the **Electronic Medical Record**

4,800

PATIENTS WERE SUPPORTED BY CHILD LIFE THERAPISTS

CELEBRATING 30 YEARS OF CHIPS

For three decades, the Chronic Illness Peer Support (ChIPS) program at the RCH has been a beacon of hope for young people aged 12 to 25 living with chronic illnesses. The ChIPS story doesn't just encapsulate the program's growth and longevity; it also shows the difference it has made in the lives of young people with chronic illnesses.

ChIPS was born out of a vision to provide a support system for young people who were navigating the complex and often isolating world of chronic illness.

"Thirty years ago, the idea of ChIPS came about because it was witnessed on the wards that the young people with chronic illness who were regular patients of the hospital were actually building friendships," Harry Brown, ChIPS Program Manager shared.

"Over the thirty years, the core of the program has been asking young people what they want. So, everything that has changed and developed has happened organically because we've always asked young people what they wanted."

One of the most significant milestones in the ChIPS program took place in the early 2000s when the idea to organise the first ChIPS camp emerged.

"Some of the 'ChIPPERS' said they wanted to have a camp, because they wouldn't normally get to go on school camps. The staff were a bit taken aback at the time, so they said, 'If you can raise \$5,000, you can have a camp,' and I'm told they chose a number that they thought could never be raised."

"But it was - they went out with the support of their families and fundraised \$5,000 and went back to the staff and said, 'When are we going on camp?'. There's been an annual camp ever since then," Harry recalled.

Another pivotal moment in the ChIPS program's history occurred in 2014 when it began receiving support from the RCH Foundation.

"Prior to the support of the RCH Foundation, funding for ChIPS was achieved through small grants and lots of volunteer support. They were really struggling at the time to keep the program going."

"When the RCH Foundation said they were going to support the program, it changed the whole mindset of how we went about things. Knowing that we could keep growing and implementing things was great," said Harry.

"With the support of the RCH Foundation, we've been able to look at our calendar year and say we can run all of these events. I had a conversation with a young person, and he was never able to perform in a school musical, but he loves the performing arts."

"So, he wanted to run a musical production and we're able to say 'Yes, let's do it!'. Without that funding and support, we wouldn't have been able to say yes."

Reflecting on the ChIPS program's incredible journey, Harry shared: "When people from other hospitals across the world hear about the ChIPS program, they say, 'How have you managed to do that?'."

"The program is such a simple idea when you think about it: here's a bunch of young people supporting each other, let's put them into a program and see what happens. I wish the supporters of the program could meet some of the young people and hear from them and their families what this has meant for them, because it's genuinely life changing."

The longevity of ChIPS is not just measured in numbers but in the countless stories of resilience, hope and transformation.

"A particular story that stands out to me is a young person who said she wouldn't be here if it wasn't for ChIPS. When she first joined the program, she was in a very dark place. And now, she's finished her degree and is just killing it," Harry shared.

As the ChIPS program continues to go from strength to strength, its future is full of possibility.

"Thirty years ago, they said, 'Let's listen to the young people and what they want, and we'll do what we can to make that happen!'. And that's still what we're doing now, so as long as we remember that we can't go wrong," said Harry.

"I want to say a massive thank you to all the ChIPS supporters! It's hard to capture in words what ChIPS means to the young people that have been in the program."

“ ”

**A YOUNG PERSON... SAID SHE WOULDN'T BE
HERE IF IT WASN'T FOR CHIPS.**

Harry Brown, ChIPS Program Manager



Harry Brown, CHIPS Program Manager

Empowering adolescents w ChIPS has the

Rebecca Powers, Susan Sawyer
Department of Adolescent Medicine & Centre for Adolescent Health

Positive Youth Development

- Positive social networks are important for adolescent development, yet are often lacking in young people with severe mental illness.
- The experience of illness, compounded by repeated hospital appointments, hospitalisations and school absences, limits access to supportive peer networks.
- Adolescents with severe mental illness have limited opportunities for participation in school and community activities.

MEET BELLA

From forging lifelong friendships and creating lasting memories, to providing a much needed space away from the medical world, ChIPS has become a place of hope and empowerment for young people facing chronic illness.

One of these young people is Bella, a fifteen year old with Noonan syndrome. Noonan syndrome is a rare genetic condition present from birth, that can cause a range of health problems.

"Fifteen years ago, there really wasn't a lot about Noonan syndrome out there – in fact, I had to write letters to a lot of paediatricians around Australia to find someone that had experience with Noonan syndrome. That's where I found Dr Julian Kelly, who's part of the RCH," Bella's mum, Donna, shared.

Bella's connection to ChIPS began through a unique link – her babysitter was once a part of the program.

"I joined ChIPS during quarantine, but before that, my babysitter also had a chronic illness and was a part of ChIPS. So, when I found out about ChIPS, I was like, 'Oh wow, I really want to do this!'" Bella said.

"Bella's babysitter told us about ChIPS, which was just fortuitous. And then we asked Julian about it, and he helped us apply for the intake group. So, this has opened up an enormous door for us," Donna added.

"To have a hospital where we can have the medical side of things, but also another side with a youth group, leadership program, mentoring program, and a safe space – this nurtures her emotional, physical, social and mental wellbeing. A program like ChIPS unlocks all of those doors for Bella."

When asked about a special memory of ChIPS, Bella fondly recalls a moment from a recent ChIPS camp.

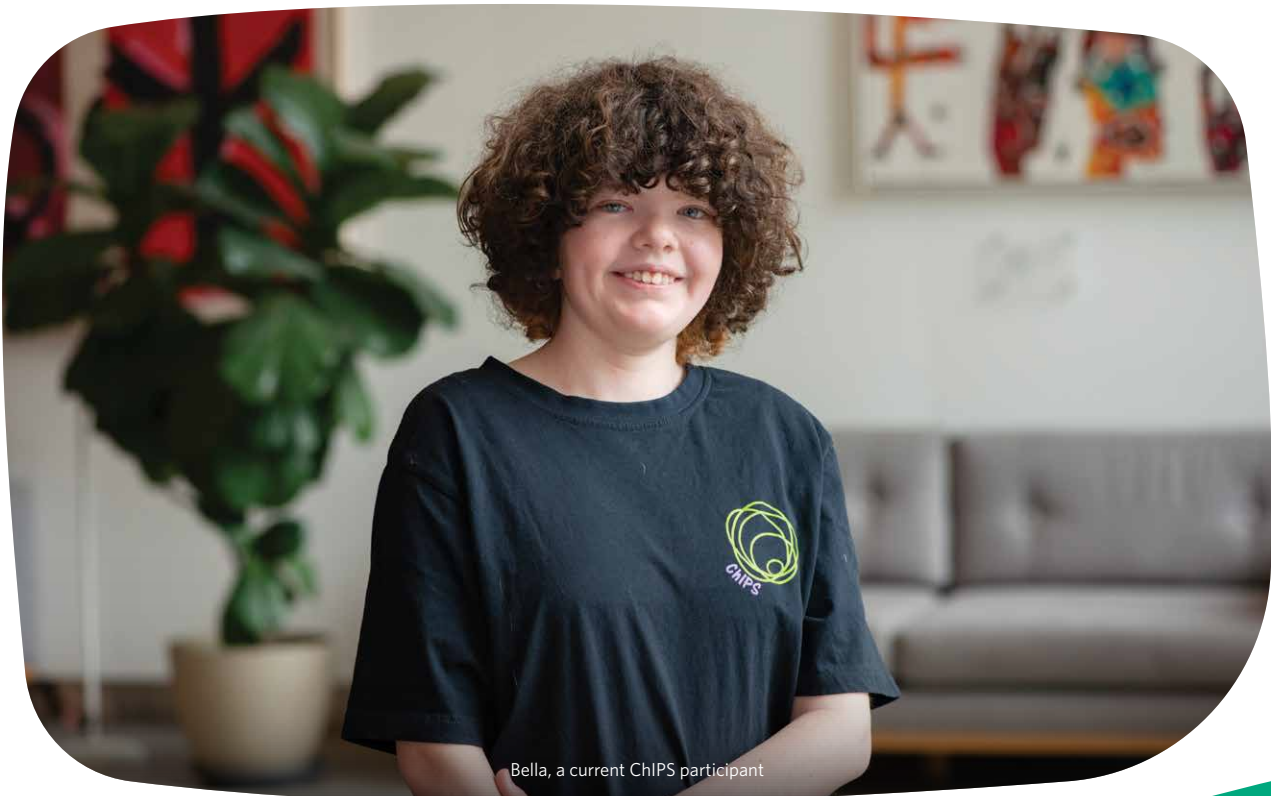
"During camp, when I was on the giant swing the first time, I was very nervous. But everyone was cheering for me, and you just feel really comfortable with trying new things – there isn't any pressure."

For Bella and Donna, the hospital, particularly ChIPS, holds immense importance.

"The hospital has been really important to us to know that we have a safe space. With ChIPS, there are friendships being made, there is confidence – the hospital has literally opened up a whole new world," Donna said.

"The hospital is like a second home for us – seeing the meerkats, the aquarium, going to Maccas, sitting on the hill – it's pretty remarkable."

Bella summed up the program's impact succinctly:
"Without ChIPS, I don't know where I would be right now."



Bella, a current ChIPS participant

MEET FELIPE

ChIPS has truly lived up to its vision of being a support system for young people who are navigating the complex and often isolating world of chronic illness.

One individual who embodies the profound influence of ChIPS is Felipe, a former CHIPPER from the early 2000s who has now transitioned into a dedicated program volunteer.

Reflecting on the pivotal role ChIPS plays in the lives of young people, Felipe shared: "ChIPS is an outlet for young people to be able to grow and evolve during those adolescent years, the tricky time that everyone goes through. The program allows them to step away from the hospital because you're coming to ChIPS to do non-hospital things."

"When I was a part of the program, I met two of my closest friends that ended up getting married, and I was the man of honour. Without ChIPS, this wouldn't have happened. The program is life changing – whether that be meeting someone to spend your life with or just meeting a friend," Felipe added.

Felipe recalls one of the best memories from ChIPS was at a car show in the early 2000s. The highlight of the day was getting to play a pre-released car racing game, but the real excitement came when the CHIPPERs had the chance to dance for the opportunity to be in the car with a stunt driver.

"We were in a crowd of hundreds of people. So we all danced, and the crowd cheered for who they thought should win. I ended up winning, so I got to be in the car with the stunt driver. It was really cool – he did a reverse spin, donuts, and a wheelie on two wheels. This memory is always in my mind – it's a once in a lifetime opportunity. Who else can say they were in a stunt car and got to do all this?"

Once Felipe had graduated from the program, remaining involved with ChIPS as a volunteer was an easy decision for him to make. "Saying yes is the biggest thing, to each and every opportunity. Nothing bad comes from saying yes."

"ChIPS is everything to these young people. For me, it made coming to the hospital feel good – I was able to separate myself and disconnect from the medical side of things. To those who support the hospital and ChIPS, keep supporting this life changing program," Felipe shared.



Former CHIPPER and current ChIPS volunteer, Felipe

THE IMPACT OF RESEARCH

The RCH Foundation works closely with the RCH and campus partners the Melbourne Children's Research Institute (MCRI) and the University of Melbourne Department of Paediatrics to find new diagnoses, treatments and cures for childhood illnesses and diseases.

Thanks to our donors, the following initiatives were supported in 2022/2023.

Improving treatment by **collecting long term data on Prader-Willi syndrome**

Fostering cooperation and research excellence across the Melbourne Children's Campus through support of researchers with scholarships and career grants

Streamlining research and clinical trials on brain cancers to ensure that every child has access to timely and accurate treatment, improved drug access and novel therapies

Investigating children who are slow to recover from concussion to provide better outcomes and accelerate recovery

Providing paediatric training pathways to lead research, which will allow the development of a strategic program to improve the international position of campus research as a whole

Supporting the **Children's Cancer Centre Biobank** to collect and distribute samples for research and clinical trials

Developing tools to assist clinicians in making informed decisions based on **real time visualisation of complex medical imaging data**, particularly imagery of the brain

Addressing challenges in healthcare, including **improved patient access and quality of care**

Providing **seed research funding to MCRI**, which is then used to leverage further government funding

Supporting the appointment of specialist paediatricians for a project that will trial an integrated model of care program with general practitioners, increasing their knowledge of child health management in general practice

\$17,321,875

INVESTED IN RESEARCH
IN 2022/2023

Investigating the best ways to use antibiotics to **reduce harm in children**

Developing precision medicine for children with kidney disease

Establishing a dedicated research laboratory to **deliver high quality paediatric cancer care**, exploring the origins of childhood cancer and identifying cancer biomarkers through national and international collaboration

Transforming care for children with speech apraxia through **genetic sequencing and analysis**

Delivering genomic diagnoses and personalised care for children with rare disease through global alliances with other paediatric hospitals

Developing a new cord blood cell therapy for children with deficient heart function and children at risk of death from heart failure

Increasing the capability for population research using a digital platform to measure and evaluate large amounts of data to address children's health problems

Supporting patients with brain cancer by increasing access to clinical trials

Ongoing support for a register to improve cardiac patient care and **quality of life after Fontan heart surgery**

Developing and evaluating an integrated clinical and laboratory program for ultra-rapid genomic sequencing in acutely unwell patients admitted to the RCH with suspected genetic conditions

THE IMPACT OF RESEARCH

Advancing treatment for patients with acute lymphoblastic leukaemia and lymphoma through access to an international study

Leveraging research discovery in stem cells and immune disorders to **establish new and innovative treatments for Type 1 diabetes**

Understanding the mechanisms underpinning common disorders of the developing brain in conditions such as autism and epilepsy to develop clinical trials and targeted interventions

Ensuring **improved health outcomes for transgender young people**

Supporting the **Melbourne Children's Trials Centre** to continue to run and facilitate the delivery of high quality trials

Establishing a disease registry for a disorder that causes bone pain due to inflammation, in order to investigate the history of the disease and outcomes for patients

Improving the lives of patients with childhood heart disease through the facilitation of **collaboration between clinicians and scientists**, as well as being the driving force for translation of stem cell medicine

Developing a research hub which aims to rapidly improve the health and participation of children and young people living with a disability

Creating an age specific blood database to aid critical clinical decisions for children with complex blood conditions

Supporting the Melbourne Children's Global Health initiative, which aims to improve the health of children and adolescents in disadvantaged populations by developing partnerships in research, public health, education and advocacy

77

RESEARCH PROJECTS FUNDED

Studying the **impacts of rapid genomic sequencing** in infants with epilepsy

Optimising the long term health and developmental outcomes of all high risk newborns through personalised precision approaches and treatment

Supporting postgraduate research positions aimed at improving current models of colorectal care

Enhancing surgical research to support patients with complex colorectal, urological and gynaecological conditions

Supporting researchers who narrowly miss out on national competitive funding to maintain research productivity to resubmit a stronger application

Delivering a key clinical imaging service for comprehensive pre-surgical planning and evaluation, and imaging guidance during brain surgery

Supporting the recruitment of a **research assistant to the Eisenstat lab at the MCRI to study solid tumours**

Establishing a partnership between clinicians and parents of children born very prematurely and admitted to the NICU, to better understand their treatment and care

Ongoing support for the **Clinician Scientist Fellowship program**, which provides the opportunity for clinicians to combine clinical experience with research

Appointing a **Neonatal Research Nurse** who will facilitate research within the RCH's Department of Neonatal Medicine and the MCRI

RESEARCH PROGRAM AIMS TO CREATE A BRIGHTER FUTURE FOR CHILDREN WITH EPILEPSY

From harnessing the power of genomic testing, to finding cures through precision medicine, research is the key to creating a brighter future for sick kids.

Thanks to the Clinician Scientist Fellowship program at the RCH, the greatest clinical minds are given the opportunity to change the future of children's health with protected and funded research time.

The Clinician Scientist Fellowship program, formally known as the Career Development Award, has been supported by the RCH Foundation since 1995. Since then, almost 100 fellows have undertaken vital research across campus, leading to improved outcomes for patients at the RCH and beyond.

One of the 2023 fellows is Dr Katherine Howell, a neurologist at the RCH. Her research is focused on improving diagnosis, management and outcomes in early-life epilepsies – an area that Katherine is incredibly passionate about.

"Epilepsy occurs in about one in 600 children and most of those occur in early life – one in 1,000 babies has epilepsy, and about half of those have really severe epilepsy."

"For those with severe epilepsy, their seizures are very frequent and resistant to most treatments. They often have severe developmental impairments and are in and out of hospital. There is also quite a high mortality rate for this group of children," said Katherine.

"At the time I was training, a lot of these children would go without knowing the cause of their symptoms. That meant we didn't know the best way to treat them, and it was very hard to say what their future might hold.

"Seeing that really made me want to change things for these families, and that started with trying to understand the reason why these conditions happen. Once you can diagnose the cause you can start to tailor their treatment," she added.

One of Katherine's main fellowship projects is the Gene-STEPS study. Part of a global partnership called the International Precision Child Health Partnership, Gene-STEPS is a study of rapid genome sequencing in babies with epilepsy.

As Katherine explains, this cutting edge genetic test can give patients and their families answers in weeks, rather than months.

"Trio genome sequencing is the most advanced type of genetic testing we can do in clinical practice. So it has the best chance of making a diagnosis for children. But the real game changer is the rapid component.

"Normal genetic testing can take many months. During that time, the child might be having seizures multiple times a day which is not only horrible, but also impacting their development and making things worse for the child in the long term. By doing things rapidly, we're getting a result in three weeks rather than three months. That enables us to individualise a patient's management early," she said.

Close to two years into the study, the results are already promising.

"The study found that rapid genome sequencing identified the genetic cause of a baby's epilepsy in 43 per cent of children. 56 per cent of children who received a diagnosis had their treatment plan changed," explained Katherine.

"What we need to do now is to try and understand what this means in terms of the child's medium to long term health outcomes – what does it mean for their seizure outcomes, their developmental outcomes and their quality of life? We need to understand all of that so that children around the world can access this testing," she added.

Katherine's hope is that through this research, children with severe epilepsy will be able to access the best diagnostic testing to understand the underlying cause of their condition, allowing clinicians to move from a one size fits all approach to individualised treatment as early as possible.

"We hope that the treatments we can offer will completely stop seizures and change the developmental outcomes so that children and their families will be able to reach great potential, and not only survive, but thrive."

For Katherine, programs like the Clinician Scientist Fellowship are the key to making this future a reality.

"So many clinicians have a lot to offer, but often it is difficult to fit research around your clinical role if you aren't getting funding. This program makes it possible. There are not many places in the country where things like this are available – it's amazing.

"Like all the fellows, I hope I can deliver really impactful research and transform lives. I think when people are giving money to this kind of thing, that's what they are hoping for, and I hope I can show that the investment is worthwhile," she added.



Dr Katherine Howell, Neurologist and Clinician Scientist Fellow

“ ”

**BY DOING THINGS RAPIDLY, WE'RE GETTING A RESULT
IN THREE WEEKS RATHER THAN THREE MONTHS.**

Dr Katherine Howell, Neurologist

MEET FRASER

The first six months of Fraser's life were filled with all the normal firsts – his first smile, the first time he rolled over, his first laugh. Then one night, Fraser experienced a terrifying first – his first seizure.

"It was around one in the morning. I heard Fraser cry out so I went into his room and thought he might need a nappy change. I laid him down on the change table and he just screamed, but not in a way that I'd heard before.

"So, I picked him up and he just went stiff. His back arched and his head flew back. Then he started convulsing," said Fraser's mum, Renae.

Fraser's first seizure went for eight minutes, ending just as the ambulance arrived. He was taken to The Austin Hospital where he had more seizures, before being intubated and transferred to the RCH, spending a few days in the Paediatric Intensive Care Unit (PICU).

Once they knew their little boy would be okay, Renae started questioning why the seizure had happened.

"He had received a vaccination about 36 hours before the seizure, so I thought it could be an adverse reaction as a result of that and reported it. Soon after that, we had a meeting with the immunisation team at the hospital.

"The paediatrician said that while some kids can have febrile seizures with vaccinations, they aren't like the seizure Fraser had. She suggested that we do a genetic test to try and understand what the cause was," said Renae.

The family underwent testing the same day. What came next was a desperate waiting game – not only for their results, but for when Fraser would have his next seizure.

"I was a mess. Fraser would call out in the night for his feed and fear would come over me. For weeks during our night feeds, I would hold him, and my legs would shake so badly because I was so scared it would happen again," she added.

Fraser's results revealed a gene mutation in the SCN1A gene, which for Fraser meant a diagnosis of Dravet syndrome, a rare and very severe form of epilepsy.

Presenting in the first year of life, Dravet syndrome causes seizures that don't respond well to medications. As they grow, and their seizures continue, most children also experience developmental delays.

"Fraser's condition has impacted everything. It stops him from being a kid. In the past year he has had around 50 tonic-clonic seizures. We don't go outside if it's too hot or too cold because it could trigger a seizure.

"If he gets too excited, he has a seizure. In the past year he has had a seizure on his birthday, on Christmas Day, on Easter and on his dad's birthday," said Renae.

Fraser is just one of thousands of patients diagnosed each year with epilepsy. With over 800 different genetic causes, the path to a targeted treatment plan can be a long one.

However, dedicated researchers across the world are working to change that.

One of them is Dr Katherine Howell, a Clinician Scientist Fellow and neurologist at the RCH. Through the fellowship program, Katherine is working on a study of rapid genome sequencing in babies with suspected genetic epilepsy.

Katherine's hope is that through her work, more children like Fraser will be able to get targeted treatments sooner.

"Our work has shown that rapid genome sequencing can make a genetic diagnosis in over 40 per cent of babies, and frequently helps us individualise a child's treatment. We are now studying the longer term impacts that rapid genome sequencing has for a child, their family, and the health system.

"Demonstrating the range and magnitude of benefits is critical to ensuring that children around Australia and the world can access rapid genome sequencing in clinical practice in the future," said Katherine.

Renae knows just how much it means to families like theirs to receive any diagnosis, let alone one within a few weeks.

“ ”

FRASER'S CONDITION HAS IMPACTED EVERYTHING. IT STOPS HIM FROM BEING A KID. WE DON'T GO OUTSIDE IF IT'S TOO HOT OR TOO COLD BECAUSE IT COULD TRIGGER A SEIZURE.

Fraser's mum, Renae

"If Fraser had another seizure before we got the diagnosis, he might have been put on a commonly prescribed group of seizure medications that are not good for kids with Dravet syndrome – they exacerbate the seizures instead of helping them.

"Getting the diagnosis when we did meant that we were able to skip that, but there are families waiting months or years who might not be so lucky," said Renae.

"Long term, knowing the cause of Fraser's seizures meant we were able to prepare ourselves earlier for what our new normal would look like. It also means we can access medications via the PBS, saving us thousands of dollars a month."

Renae is also excited by what Katherine's work might mean not only for her own son's future, but for other children like Fraser.

"For children with epilepsy, research is the only thing that is going to make a difference long term. Research can lead to personalised treatments and even better – a cure.

"But we can't do any of that without funding. We need more funding for more Katherines – people who are dedicated to changing the outcomes for children like Fraser," Renae added.



Fraser



Fraser at the RCH

PHILANTHROPICALLY FUNDED POSITIONS

LEADERSHIP POSITIONS AND CHAIRS

Academic Burns Surgeon
Dr Monique Bertinetti

Apex Chair of Neurodevelopment and Disability
Professor Christine Imms

Chair of Child Health Informatics
Professor Jim Buttery

Chair of Genomic Medicine
Professor John Christodoulou AM

Chair of Allied Health
Dr Kelly Weir

Clinical Leader for Trauma, Burns and Surgery Research
Associate Professor Warwick Teague

Director of Medical Education
Dr Amy Gray

Geoff and Helen Handbury Chair in Adolescent Health
Professor Susan Sawyer

Jigsaw Chair of Paediatric Plastic & Maxillofacial Surgery
Professor Tony Penington

Professor of Paediatric Emergency Medicine
Professor Franz Babl

Professorial Sessions for the Lorenzo and Pamela Galli Chair of Developmental Medicine
Professor David Amor

The Donald Ratcliffe and Phyllis McLeod Director of Nursing Research
Professor Fiona Newall

Translational Research Academic Paediatric Surgeon
Professor Sebastian King

FELLOWSHIPS

The Aitken Fellowship (Endocrinology and Diabetes)

Apheresis Fellow

Children's Cancer Centre Fellowships

Clinical Education Fellowships

Clinical Education Fellowships, Mental Health Strategy

Clinical Research Fellow, Paediatric Epilepsy Services

Clinical Research Fellowship, Paediatric Neurosurgery

Clinical Research Fellows, Cystic Fibrosis

Clinician Scientist Fellows

Education Hub Fellows

Emergency Department POCUS Fellow

Global Health Fellow

Health Services Clinical Fellow

Neuromuscular Fellowship

Neurology Clinical Research Fellowship

Neurodevelopment and Disability Postdoctoral Research Fellowship

Nursing Research Fellowship (BEST Practise)

Paediatric Intensive Care Unit (PICU)

Paediatric Plastic and Burn Fellow

Physiotherapy Fellow

Post-Doctoral Research Fellow, Disability

Post-Doctoral Fellow (Bioinformatics)

Principal Research Fellow, Trans 20

Psychology Fellow

Rats of Tobruk Neuroscience Fellowship

RD Now Bioinformatics Postdoctoral Fellow

Senior Research Fellow, Melbourne Children's Trials Centre

Simulation Allied Health Fellow

Simulation Medical Fellow

Simulation Nursing Fellow

Uncle Bobs Clinical Neurology Fellowship

Victorian Burns Fellow

SCHOLARSHIPS

Allied Health and Nursing Development, Education and Leadership Program

Dame Elisabeth Murdoch Nursing Development Scholarship

Elizabeth Fearon Scholarship

Professor Frank Billson Research Scholarship

Jadeybird Ophthalmology Travelling Scholarship

Jeff Crouch Memorial Scholarship

Jeannie H Poolman Scholarship

Karmien Chan Memorial Scholarship

Postgraduate Health Research Scholarships

Research Excellence Scholarships

Rosemary Derham Scholarship

RCH Paediatric Handbook Travelling Scholarship

Rosen Family, Lily's Gift Travelling Scholarship

The Pied Pipers' Scholarship

Uncle Bobs Travelling Scholarship

The Volunteers' Nursing Scholarship



Kelly Light, 2023 Dame Elisabeth Murdoch Nursing Development Scholarship recipient



**THANK
YOU**



DONOR RIGHTS

To ensure the RCH Foundation has the respect, trust and confidence of our supporters and friends, we declare all donors have the following rights:

- To be informed of the RCH's mission and vision, and the way in which their gift will fulfill this mission and vision while meeting the supporter's philanthropic intentions
- To be advised of the membership of the various boards and committees that govern the RCH Foundation and to expect the Board will exercise prudent judgment in its stewardship responsibilities
- To have access to the RCH Foundation's most recent financial statements and investment policies
- To be assured that their gift is used effectively for the purposes specified by the supporter, or where such purposes are no longer practicable or appropriate, that the RCH Foundation and hospital promises to remain as true as possible to the supporter's original intentions and stipulations
- To receive appropriate acknowledgement and recognition for their generosity
- To expect that their request for anonymity is strictly observed
- To expect that all information about their support or intended support is handled with professionalism, respect and confidentiality and in a manner equal and above that required by law
- To be provided with prompt, truthful and forthright answers about any aspect of their gift
- To be informed whether those seeking donations are volunteers or employees of the RCH Foundation
- To have the opportunity to update their communication preferences and unsubscribe from mailing lists
- To be assured we value their privacy and information.

To read our privacy policy, please visit
www.rchfoundation.org.au/privacy



RCH nurses

INDIVIDUAL GIVING

The RCH Foundation is delighted to acknowledge the individuals who believe that through major philanthropic support, they can make a difference to children's health.

A

Helen and Michael Abeles
Heide Allen
Allenby Foundation Pty Ltd
Robyn Armitstead
Australian Indian Association
Australian Vietnamese Aged Care Association

B

Andrew and Natalie Bassat
BFG Asset Management
Maxine Bowness
Eleanor Burns

C

Eve and Chris Cable
Mellissa Callanan
Rowan Castan
Circolo Pensionati Italiani di San Luca,
Lalor & Thomastown
Peter and Jan Clark
Hilda Cowan
Nicole Cossley

D

The Davidsons
Barry Davies
Aldo De Lulio
Carmel Divitaris
Hang Do
Damien Dolan
George and Maureen Dyer

F

Graham and Margaret Facey
Isaac and Judith Feldman
The First Friday Boys Lunch -
Annie's Gift
Dylan Fitzmaurice
Fonterra Australia

Steve and Jane Forrester
Bec and Will Foster

G

Suresh Senathirajah and Catriona
Galbraith
The Garro Family
Rob and Nellie Glas in memory of
Noah Felmy-Glas
Alan Goodfellow
Noel Goods
Grange Investments Pty Ltd
Sol and Edith Greiman
Maree Griffiths

H

Harry Lyon Moss Estate, managed by
Equity Trustees
Daniel Hassan
Hoa Hao Buddhism Congregation
Victoria
Geoffrey Howland
Brian Huggert
Sue Hunt AM

I

The IN Group
Ground Force International

K

K and N Company Pty Ltd
Hatice Kahraman
Danny Karabinas
Steven Katsifolis
Richard Kearney, Esq.
Ian Kennedy AM
Denis and Pam King
Shelley Kline
Sylvia Kline
Neos Kosmos
Sameer Kumar

L

Lalor United Bocci and Social Club Inc
Pat LaManna OAM and Helen
LaManna Cancer - Stroke
Research Legacy
Lawn Mowing Contractors
Association of Victoria
Aiden Leonard
Yanzhu (Toby) Li
Kai Cheng Lin

M

Craig Mahan
Jonathan Mandel
Noel Martin
Mary Poppins Production Pty Ltd
The McDonald Family in memory of
Ian and Dorothy
Elizabeth McLaurin
Simone Meagher
Melba Vale Retirement Village
Members of the RCH1000
Danielle Meyer
Pasquale Mezzatesta
Honey Mi
Aaron Miller
Don Moyes
John Muller

N

David Naunton
Richard Nelson
David Ng
Dinh Thao Nguyen
Vu H Nguyen
The Norman Family
Dorothea Nossbaum
Barry Novy OAM and Sue Selwyn

O

Barbara Onley
John O'Reilly

P

Will Parfitt
Douglas Parsons
Lap Peng
John Pulbrook

R

RedZed Lending Solutions
Jill, Rob and Millie Richardson
Frank Rizzo
R, B & B Fund
Rotary Club of Phillip Island & San Remo
Roycroft Medical Centre
Marc Ruedegger
Simon Ryan

S

Pauline Sacco
Patrick Schembri
The Kyle Sheldon Memorial Fund
Benjamin Sherriff
Roberta Spicer
Graham Spring OAM
Andrew Squires
Mr R L Stanton
Judith Stembridge
Laurence Stewart

T

Mabel Barret Lee Tan
Paul Tasker
Dr Russell Taylor
Theissling Family

V

Ella J Vagg
Rosemary Van Emmerik

W

Bart Ward
Mick Ward
Wan Long and Pauline Wei
Merilyn and Ian Woodhouse

Y

Hani Yakoop
Peter Yates AM and Susan Yates
Jan Young

Z

Vicky Zapparas



Shelley Kline (second from right) with (from left to right) Dr Jonathan Ruddle and Dr Sandra Staffieri AO (Professor Frank Billson Research Scholarship recipients), Charles Nodrum and Sue Hunt AM

THANK YOU MCDONALD FAMILY

A legacy spanning almost 80 years: that's the McDonald family's connection with the RCH. Their family's story is one marked by dedication, service and a shared commitment to the wellbeing of children.

The family's journey started during the challenging times of World War II, when Dorothy Hogg began her nursing training.

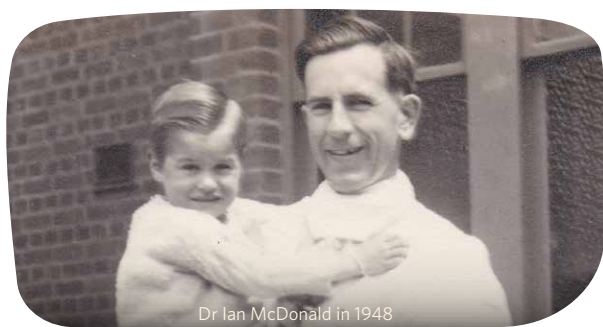
In 1946, Ian McDonald graduated from a Bachelor of Medicine and Bachelor of Surgery, and spent a few years as a resident, admitting officer and surgical registrar at The Melbourne Hospital and The Children's Hospital.

The couple met at The Children's Hospital when Dorothy was a theatre sister and Ian was a surgical registrar, although he soon recognised the importance of the developing specialty of anaesthesia.

They married in 1950 before heading to the UK on a Nuffield Scholarship with Jan, their first child in tow, for several years at the Radcliffe Infirmary, Oxford.

"We grew up in a happy household. Our father was rarely home before seven. We were in our mid teens when we realised that it was not normal to have a father who left home before seven, was home after seven, and was often called out at nights," said Jan and Sue.

"The hospital at the time was a very different place. The nurses were often scrubbing floors and most of the actual nursing was done by trainees.



Dr Ian McDonald in 1948

"There's one story about our mother when she was a junior nurse on night duty during World War II, and she and her senior colleague put the kettle on to have a cup of tea. But, they got busy, forgot about the kettle and left it on the gas ring, which caused it to melt. If a nurse broke something at the time, they had to replace it, although doctors seemed to be excused this expense if they broke something.

"During the war, kettles couldn't be had for love nor money, so the two nurses went traipsing through the streets of Carlton. Eventually, they stopped at a factory front and told their story to the staff, who felt so sorry for them that they gave them their kettle," the daughters shared.



Nurse Dorothy Hogg in the 1940s

Reflecting on their mother's wisdom, they added, "I remember something our mother always said: 'What is it that defines the hospital? It's the children.'"

Following her parents' footsteps, Sue joined the RCH as a nurse, where she furthered the family's goal – to provide the best care possible to every young patient who walked through the hospital's doors.

"Each time I've walked down Gatehouse Street I've thought, 'I'm coming home.'"

Ian and Dorothy's connections with the RCH continued through their youngest child, Andrew, who sadly died in 2021. He was a patient on several occasions for various illnesses and injuries.

The McDonald family has generously donated \$200,000 towards nursing research and anaesthesia and pain management research, ensuring that future generations of children will receive state of the art clinical care and compassionate support.

"It might be your child needing the support, or your grandchild, your neighbour's child or your colleague's child. And by donating, you've helped a number of different families," shared Jan and Sue.

In essence, the McDonald family's legacy has touched countless lives, creating a pattern of care that will continue over the years.

"With the research we're supporting, it's about sick children getting home as soon as they can, to their own bed and toys, where Mum will make their toast into little soldiers with vegemite. It is about supporting the children of Victoria, of Australia, and ultimately of the world."



The McDonald sisters: Jan (left) and Sue (right)

“ ”

**I REMEMBER SOMETHING OUR MOTHER
ALWAYS SAID: 'WHAT IS IT THAT DEFINES
THE HOSPITAL? IT'S THE CHILDREN.'**

Jan and Sue McDonald

THE 1870 SOCIETY

We gratefully acknowledge supporters who have planned to leave a gift to the hospital in their Will. Your commitment inspires us, and will give hope to children and families for generations to come.

A

Elizabeth Ahles
Brenda Aisbett
Robyn Anderson OAM
and Stewart Anderson
Donna Aranyi
Alex Auldist AO

B

Margaret Baker
Robert Baker
Gerhardus and Jeanette Bakker
Margaret Barnett in memory of
Stephen James Minns
Margaret Barton
Craig Baxter
Kerrie Beauglehall OAM
and Ross Beauglehall
Jeremy Bein
Graeme and Penny Bentley
Megan Brinsmead
Ryan Brown

C

Christine in loving memory of
her son Evan Callow
Nick Cartwright
Andrew Connell

D

Aldo De Iulio
Lucia and Antonio Di Maio

F

Ash Falla
Denise and Peter Ferguson Family Gift
Leslie Fleming
Peter Fleming

G

Christos and Maria Gabriel
Dennis Garnham
In memory of John Alfred Gooding

H

Natalie Henderson
Tess Hernon
Hayden Hickey
Stuart Hodges
Sue Hunt AM

J

Leanne James

K

Nectaria Kalogerakis
Louise Kenneally
Barry and Katrina Knight

L

Nabil Labbad
Rosalie Lee
Barbara and Graeme Love

M

Rosemary Mangiamele
Lois Mathieson in memory of
Alexander Macleod Mathieson
Catherine Millie
Cindy and Paul Molenaar
Fiona and Ashley Murrie

N

In memory of Tina Nelson

O

Barry Novy OAM

P

Paul David Pacey
Joanne and Eddie Pallotta
Dawn Lorraine Pick and Norma Pick
Steve Portway

R

In memory of R, B & B
Julie Rees

Tom Reisner
Gloria Riddell
Ena and David Roach
Helene and Clarrie Rowdon
The Runyan-Tait Family

S

Nicholas Scott
Denis Shaw
Baljinder Singh Dhaliwal
Katie Spencer

T

In honour of Mabel Barrett Lee Tan
Ian and Elaine Thomas
Judi Thomas
Norma Thomas
In memory of Wayne and
Peter Thompson
Karin Tiedemann
Michael Togias and Christine Politis
Jason Tomlin
Ross Twentyman

V

Veronika Vala
Ian and Jane Veltman

W

In honour of Ray Warfe, 2nd Field
Ambulance, Rat of Tobruk
Miriam Weisz OAM and Tibor Weisz
Carol Wigney
Leslie Williamson
Richard Winchester
Marilyn and Ian Woodhouse

Y

Peter Yates AM
Jane Yescovitch

Anonymous 127 Supporters

THANK YOU GRAEME AND PENNY BENTLEY

When Graeme and Penny Bentley decided to leave a Gift in their Will to the RCH Foundation, they weren't just adding to a more than 50 year history of giving – they were making a commitment to creating a brighter future for children and young people.

The couple's long standing connection with the RCH started in 1967 when Penny began supporting a social and fundraising group of the hospital called the Pied Pipers. When Penny started dating Graeme a few years later, she was quick to get him involved.

"We both became full members later that year," recalled Graeme.

In 1970, a year after the couple formally joined the group, funds raised by the Pied Pipers were put towards the purchase of a heart-lung bypass machine. They didn't know it at the time, but 10 years later, Graeme and Penny's own daughter would need a machine just like that.

Melissa was born in 1981 after what Graeme describes as "much deliberation" due to Penny's own medical issues. Whilst the pregnancy went well, Melissa's paediatrician identified deformed thumbs and a heart murmur once she was born.

At four days old, Melissa was sent to the RCH for an X-ray and angiogram which diagnosed Fallot's Tetralogy, a serious heart defect. A few weeks later, she had a cardiac shunt procedure performed by acclaimed RCH cardiac surgeon, Mr Roger Mee AO.

The surgery itself was a stop-gap measure, giving Melissa's body time to grow until she was strong enough to undergo a full repair, which occurred a year and a half later.

Melissa continued to undergo surgeries and procedures for her heart and her hands throughout her childhood and into her 20s, including a heart valve replacement at 26 years old – Melissa's final cardiac surgery to date.

As Melissa grew, Graeme and Penny's support of the Pied Pipers continued. Over the years, they dedicated every Good Friday to rattling collection tins at traffic lights and organised countless events, all to raise money for the hospital.

While they have now taken a step back as active members, their passion for the RCH has remained and recently, they decided to leave a Gift in their Will to the RCH Foundation as a way of continuing their support.

"Having supported the RCH since 1967, then having been recognised with RCH Honorary Life Governorships in 1977, Honorary Life Memberships of the Pied Pipers, and finally an Australia Day Community Service Award in 2011, you could say that the RCH is in our blood.

"More than that, the RCH allowed us to have a future we didn't think we'd have. The care and clinical expertise gave us a family, and in turn grandchildren, that might never have been," they said.

The couple are also excited by recent technological advancements in cardiac care at the RCH, and the possibility of contributing to life changing research for patients with cardiac conditions, like Melissa.

"So much has changed since Melissa was a patient at the RCH. We want to be part of this progress. And through our Gift in Will, we can be," they added.



Graeme and Penny Bentley with their daughter Melissa

“ ”
**THE RCH ALLOWED US TO HAVE A
FUTURE WE DIDN'T THINK WE'D HAVE.**

Graeme and Penny Bentley

BEQUESTS

Leaving a Gift in your Will is a deeply touching way to support generations to come. In 2022/2023 the following people generously remembered the hospital in their Will and we sincerely thank them. In their memory we recognise and honour their legacy.

A

Raya Ashford
Mouhamed Assafiri

B

Elvira Bagnato
Martin Barlow
Harry Bindless
John Boxer
Peggy Brient
Elaine Bull
Kenneth William Burns and Phil Burns

C

Jill Campbell
William John Cantlin
David Alexander Clark
Neville Condron
Joan Curran
John Cybula

D

Margaret Dall
Ana Isabel D'Arienzo
Marjory Dawson
Donna Dening
Marianna Di Mauro
Victoria Diacono
Pamela Durra

E

A donation on behalf of
the Edwards Family

F

Lilian Field
Betty Fleming
Sonja Francis
Richard Frappell
Lynette Elizabeth Freene

G

Norman Gibbs
David Graham in honour of
Kartier Graham
Jeanette Greedy

H

Raymond Hallion
Rhonda Hammer
Inge Hofmayer
Constance Hunt

J

Sabrina Jansz
William Maxwell Jones

K

Michael Kain

L

Marjorie Lander

M

Maria Magdic
Erin Mason
Irene Masters
William (Bill) Henry McDonald
Sofia Minou
Ronald Morison
Dorothy Morrissey
Lennard Howard Gabbett Mulhallen

N

Ronald Newman

P

Frances Parkinson
Donna Potaris

R

Susan Reilly
Doris Rice
Betty Rocke
Eric Rose

S

Hendricus Sarolea
George Service
Francis Patrick Smith
in memory of Peter Smith
Kaye Sotnikov
Carole Spong

V

Matthew Van Beek
Raj Vasudeva
Edwin Arthur Austin Vaughan

W

Suzanne Warner
Elizabeth Whelan
Edel Wignell
Woodcock Family Trust
Jonathan Wright

Y

Ronald Young

THANK YOU

LENNARD MULHALLEN



Lennard Mulhallen

For 94 years Lennard Mulhallen, also known as Len, contributed to his community. Now, thanks to a Gift in his Will to CIKA, Len's legacy of giving back will continue.

Sandra, Len's oldest daughter, remembers her dad fondly.

"Dad was born in Nhill, a small town in rural Victoria. His life was shaped by the Depression and WWII. He came from a hard working migrant family and by the age of 19 he was leading a crew of men building homes in rural areas around Nhill.

"As a father of four, he was a hands on dad. He taught all his children and grandchildren to drive from the age of four and he loved participating in all the family birthdays, Christmas and the annual camping trip to Port Fairy.

"His annual trek to the bush to find the best Christmas tree is still a topic of much love and laughter within the family," said Sandra.

Alongside his wife Gwen, Len was heavily involved in the community. As well as working full time, Len was involved with his church, St George's Tennis Club, the Nhill Cemetery Trust and the local council, including a time as President.

In 1989, Sandra and her husband Steve's oldest son Shawn was diagnosed with osteosarcoma, an aggressive bone cancer. He was just 13 at the time.

Len was a great support to the family during this period and often travelled to Melbourne to spend time bedside with Shawn.

"Dad had a special relationship with Shawn as he had also endured poor health in his younger years. His presence was very reassuring for Shawn and was a great help to us as we lived in rural Victoria," said Sandra.

Some years after Shawn's treatment, Sandra and Steve joined CIKA, an RCH Auxiliary group dedicated to funding research into cancerous solid tumours in children.

"My parents were very supportive of CIKA. Mum would fundraise in her local town, while Dad donated financially and on occasions attended our functions in Melbourne," said Sandra.

Len's contribution to CIKA even extended beyond his lifetime.

"Dad made it clear in his Will that my sister and I were to ensure that sums were to go to good causes and areas he was passionate about," said Sandra.

Per Len's wishes, the major beneficiary of his Will was CIKA. His Gift has been directed to the RCH's Children's Cancer Centre Biobank, contributing to the purchase of life changing equipment.

Funds from Len's Will were also directed to the fit out of the new Nhill Tennis Club kitchens, as well as upgrading technology at the Nhill and District Historic Society and establishing an annual scholarship for the next 20 years at Nhill College for a student who wants to pursue a career in a trade.

When asked how her dad would feel about his gift making a difference in the lives of children and young people at the RCH, Sandra summarised it simply, "He would be chuffed."

ENDOWMENTS

Endowments are established by donors to provide long term support. Their gift is invested and the income earned is paid to the RCH Foundation on a regular basis to support the hospital.

A

Anonymous
Margery and Keith B Aitken
Foundation
Estate of John Anderson
John Anderson

B

Arthur Lyndhurst Blannin
Thomas Henry and
Marjorie Betty Barnard
Arthur Edwin and Anne Edith Barry
Amy Bastings
Estate of Frank Hincks Bateman
Benjamin Barnes
E C Blackwood Charitable Trust
Estate of Arthur Blannin
Alfred and Sophie Bright
Memorial Fund
Harry Tootal and Ms Eva Broadhurst
Estate of Ernest L Brown
Jessie Carnegie Burnett

C

Church of England
Silas Clark Charitable Trust
Dennis Osborne Clarke
Charitable Trust
Marjorie Hayes and
Olivia Cock Memorial
Kevin Stewart Cowell
Thomas and Louisa Cowell Memorial
Fund
Margaret Elizabeth Croft
Alfred Noel Curphey in Memory of
Edith Curphey

D

DTM and E Davies Memorial Trust
Amanda Joy Dickson Endowment
Dunn Family Perpetual Trust

F

Estate of John Fleming
William Fletcher
Anna Maria Ford Memorial Fund

G

George Lawrence Godfree Bequest
Keith Goods Memorial Trust
The Grant Bequest
Estate of Alice Marion Grimwade

H

Helen Hadi
Herbert William Hampton
Colin Hausler
Joyce Adelaide Healey Charitable
Trust Fund
Margaret Henderson
John Henry Charitable Trust
Estate of Louisa Henty
Frank Hayley and
Doris Verna Hodgson Trust
Elsa Holmes Charitable Trust
The Arthur and Sheilah Horne
Charitable Trust

I

William and Mary Ievers

J

Ruby and Milton Johnson
Doris and Rupert Joseph
Charitable Trust

K

Denis Aloysius King
Joseph Kronheimer Charitable Fund

L

Fred and Vi Lean Charitable Trust
Joseph and Kate Levi Charitable Trust
Lewis Posner and Rosetta Lenzer
Charitable Foundation
Lillian Little Trust
Martha Livingstone
Estate of Charles Duplan Lloyd

M

Alexander Clarke MacBean Bequest
Estate of William Macrow
Estate of Charlotte Marshall
Estate of William Marshall
John Robertson Grigor &
Eva McKenzie Bequest
Edith McTaggart Charitable Trust
Horatio R C McWilliams
Margaret Lillian Merrifield
Memorial Trust
George Wesleck & Violet Morewood
Trust Fund
Estate of David Mathais Morgan
Estate of John Murdoch

N

Estate of Katharine St. Clair Nanson
Jenifer Nicholas Bequest
Emma Nowak

O

Eugene and Janet O'Sullivan Trust

P

George Pile Charitable Trust
May Price
Isabella Agnes Pritchard
Peter James Provelson Trust Fund

R

Kitty and Harry Ramondt
Charitable Trust
Ethelwyn Elsbeth Richardson Trust
Frank and Sybil Richardson
Charitable Trust
Rigg Memorial Trust
E J and M Roberts Trust
Edith and Don Robinson
Charitable Trust
Estate of George Roche
Simon Rothberg Charitable Trust
Estate of William Hall Russell
Trust Fund

S

V N Sanders Charity Trust
Andrew James Schreuder Foundation
Archibald Norman Shannon
Frederick B Shepherd Trust
William Arthur Shipperlee
Estate of Heather Sybil Smith
Henry Brough Smith Charitable Trust
Dorothy Isabel Stirling
Charitable Trust
Margaret Jean Sutton Charitable Trust
John Henry James Symon
Mary Symon Charitable Trust

T

Estate of Ruth and Harry Taafe
Estate of Augusta Bessie Tadgell
Flora Louisa Thompson
Charitable Trust
Estate of Gary Thomson
Joseph Thornton Tweddle

W

Jane H Walker
Eliza Wallis
Estate of Eileen Walsh
Francis, Thomas and
Jeanette Warren Trust
Norman, Mavis and
Graeme Waters Trust
Ernest and Letitia Wears Memorial
Trust Fund
Syd and Ann Wellard Perpetual Trust
Arthur Donald Wells
Judith Myrtle and
David Edward Williams
Estate of Emily Vera Winder
Charles Wright
Estate of John Frederick Wright

RCH FOUNDATION MANAGED ENDOWMENTS

The RCH Foundation is proud to hold and manage a number of endowment funds on behalf of our donors. Thanks to our generous supporters, these funds will continue to have a long term impact on the care the hospital provides to sick children and their families.

The Margery and Keith Aitken Endowment

The Aitken Fellowship Bequest

Apex Foundation Chair in Developmental Medicine

The Auxiliaries Legacy Fund

Betty Cosgrove Endowment Fund

Professor Frank Billson Scholarship Fund

Bob Semple Legacy Fund

Dame Elisabeth Murdoch Nursing Development
Scholarship Endowment

Geoff and Helen Handbury Chair in Adolescent Health

Helen Novy Volunteer Service Memorial Fund

Rats of Tobruk Neurology Fellowship

The R, B and B Fund

The Rosen Family, Lily's Gift Travelling Scholarship for
General Registered Nurses

Run for the Kids Burns Coordinator Fund

THANK YOU

RATS OF TOBRUK ASSOCIATION

The Rats of Tobruk Association is named after the Australian soldiers who fought bravely in the Siege of Tobruk in Libya during World War Two.

Forced to endure eight long months in dug outs, caves and crevasses, they withstood constant enemy fire, searing heat and bitter dust storms.

In a typical Australian fashion they took the derogatory term "rats of tobruk" and turned it into a badge of pride. Those soldiers became a source of inspiration for all the Allied Forces.

In the years after the war, the association became a place for veterans to connect, share stories and continue their famous mateship.

Approximately 14 years ago, foretelling the day when they would all be gone, the Rats themselves took control of their legacy. They decided that they didn't want a statue, or bricks and mortar as a memorial, and what they initiated will last far longer than any building.

They said that they had been fighting for a free and safe future, and they reasoned that the future lies with children. So they decided to invest in people; in the young doctors who could make a positive difference to the lives of sick children all over the world.

They donated \$1.5 million from the sale of their Albert Park meeting hall to the RCH Foundation. Held in perpetuity, this generous donation established the Rats of Tobruk Neuroscience Fellowship.

"In fact our association has been donating to the RCH from the 1940s according to the minutes in our archives," said Bruce Bingham, President of the Rats of Tobruk Association.

The Rats of Tobruk Neurology Fellowship is now internationally renowned and has so far assisted 12 young doctors to delve further into the challenges in the epilepsy arena; a remarkable legacy.

With a shortage of paediatric neurologists in Australia, this role provides a valuable education opportunity and offers an additional resource for the busy inpatient and outpatient neurology facilities at the RCH.

"We want to assist the next generation to come along and be healthier and more sustainable in their lives," said Bruce.

The generous ongoing support from the Rats of Tobruk Association is focused on children and young people who suffer from diseases of the brain, such as epilepsy. Characterised by the tendency to have recurring seizures, epilepsy can take many forms, with the age of onset also varying and affecting each patient very differently.

The RCH is nationally and internationally recognised for its epilepsy research and, thanks to the Rats of Tobruk Neurology Fellowship, the hospital can continue to develop new and improved ways of assisting patients with world leading care.

"We want to continue to support the wonderful work the RCH does, and to perpetuate the Rat's legacy," said Bruce.



ROTA representatives at the RCH

TRUSTS AND FOUNDATIONS

Thank you to the charitable trusts and foundations that donate to support the important work of the hospital.

\$200,000+

Donald Ratcliffe and
Phyllis Macleod Trust
Gandel Foundation
Jigsaw Foundation
Live Life Foundation
Loti and Victor Smorgon
Family Foundation
My Room Children's Cancer Charity
The Shine On Foundation

\$100,000+

Camp Quality
Children's Cancer Foundation
H. T. Pamphilon
The Hugh D.T. Williamson Foundation
MacKenzie Family Foundation
Muscular Dystrophy Australia
The Orloff Family Charitable Trust
The Pratt Foundation
Robert Connor Dawes Foundation
The Samuel Nissen
Charitable Foundation
The Smith Family
Sporting Chance Cancer Foundation

\$50,000+

Andrew and Geraldine
Buxton Foundation
Archer Kyffin Thomas and Judith
Kirkwood Thomas Memorial
Charitable Fund
Collier Charitable Fund
DEBRA Australia

Giving 4 Tomorrow Foundation
Jakob Frenkiel Charitable Trust
Lucia Crinis Legacy Fund
Nigel & Patricia Peck Foundation
Peter and Susan Yates Foundation
Rae and Peter Gunn Family Foundation
Robert C Bulley Charitable Fund

\$20,000+

Australian Children's
Music Foundation
The Calvert-Jones Foundation
Chain Reaction Challenge Foundation
Hislop Family Foundation
Rae Burnett Farmer Collins Bequest
Robert and Jasmine Dindas
Charitable Fund
The Stuart Leslie Foundation

\$10,000+

Altitude Children's Foundation
Child's Play
Daly Family Foundation
Dean Laidlaw Foundation
The Dyer Family Trust
Helen Macpherson Smith Trust
The Humanity Foundation
Kaplan Foundation
Kel & Rosie Day Foundation
The Kumar Family
Leibovich Foundation
Pizmony Family Foundation
Riverlee Foundation

\$5,000+

6A Foundation
A&E Finkel Foundation Trust
Bowness Family Foundation
The Cuming Bequest
Estate of the late
Ernest Lonsdale Brown
Georgina Menzies MacOnachie
Charitable Trust
Naphtali Family Foundation
Peter and Sylvia Stach - The Debbie
Stach Memorial Gift Fund
Rhys Jones Charitable Endowment
Rigg Memorial Trust
Victorian Community Foundation

\$2,000+

Halina Lewenberg Charitable
Foundation
Hanlon Foundation
Lord Mayor's Charitable Foundation
The MARD Foundation
The Peter Isaacson Foundation

THANK YOU SPORTING CHANCE CANCER FOUNDATION

In Victoria, a state with almost seven million people and the most densely populated state in Australia, there's a special organisation that supports essential services in regional areas for children and adolescents dealing with cancer, and their families.

That organisation, Sporting Chance Cancer Foundation (SCCF), has been supporting the RCH Foundation for over fifteen years, contributing just over \$100,000 annually and \$1.6 million in total.

This long term commitment has had a significant and lasting impact by supporting the hospital's Regional Outreach and Shared Care Program, a statewide program that is facilitated by the Victorian Paediatric Integrated Cancer Service (PICS).

Rob Hines, the Victorian Director of the SCCF shared, "For regional families, travelling is such a big strain on not just the child with cancer, but also the parents and siblings. When we look at our reports and see the number of kids that are able to stay home and receive care, that's the greatest single measure of success."

"Cancer is a very tough time – and it's hard for people to be over the moon about things. But it is very gratifying when you see someone who has every right to be hating the world, give you a smile," Rob added.

The Regional Outreach and Shared Care Program ensures that kids all around Victoria have access to vital cancer care services.

The program offers practical assistance such as remote clinics and telehealth appointments, making it easier for patients, no matter where they live, to get the care they need.

Chris Williams is the Bob Skilton Regional Outreach Nurse at the RCH, a role funded by SCCF. With the help of other PICS staff in the regional program based at the RCH, Chris has been the face of the program on the road, ensuring families dealing with cancer in regional Victoria have access to essential services.

"The main goal of the program has always been 'care as close to home as possible, when it is safe to do so'. The program has helped regional health services build what would otherwise be a demanding paediatric medical sub-speciality into a standard of care for supportive cancer care and low-complexity chemotherapy," shared Chris.

"The ongoing philanthropic support over the years has helped me reinforce relationships across Victoria and support effective communication and teaching. The funding has provided sustainability and a constant in the regional health services' ability to support care – which is incredibly important in an area such as paediatric oncology, as it is always changing."

Reflecting on the vital role played by the Regional Outreach and Shared Care Program in supporting children, adolescents and families living with cancer, Chris is excited about the program's promising future, particularly in light of SCCF's support.

"One of the areas we are focusing on is the period of cancer surveillance in children, which can often be for up to five years or more, and how we can enable paediatricians to provide more of this locally with the support of the program and the cancer services.

"We are also in discussions around how we can increase capacity of Barwon Health Geelong as they move towards building a new and larger paediatric precinct. There is also consideration of where and how we could support families from Tasmania. All this, of course, is incredibly hard to achieve without the ongoing support of SCCF to help plan and build greater capacity," said Chris.

"The question of, 'How long did it take you to get here?', should be asked more often. At the end of the day, care of the child belongs with the family and staying close to your community."



Chris Williams, the Bob Skilton Regional Outreach Nurse, and Rob Hines, the Victorian Director of the SCCF

THANK YOU JASMINE DINDAS

Jasmine Dindas is an avid supporter of the RCH Foundation, whose generosity stems from a personal connection with the hospital. Over the years, her support of the RCH has taken many forms, including involvement with the Auxiliaries, individual giving and now membership of the RCH1000.

Jasmine's son Daniel arrived five weeks prematurely, struggling to breathe and in desperate need of medical attention. He spent weeks in the NICU at the RCH, relying on a ventilator and even enduring a two week induced coma.

"Daniel received incredible care with the primary goal being his journey to improve. His team of nurses and doctors demonstrated dedication beyond words," Jasmine shared.

Daniel's battle for survival was nothing short of a miracle. It was the unwavering commitment of the RCH staff that saved Daniel's life and instilled in Jasmine a profound sense of gratitude.

Her philanthropic journey began when she started the Tiny Miracles Auxiliary in 1996, a group that raised funds for the NICU at the RCH until 2013.

Since that time, her generosity has evolved into organising dinner and cocktail fundraising events in support of the RCH. Jasmine also makes regular donations, aimed at helping the hospital purchase state of the art equipment and fund vital research to help countless children and families.

"The best part is knowing what a difference the RCH plays in people's lives. Just knowing it's there to provide whatever is required, from surgery to psychology, to oncology and prosthetics," explained Jasmine.

In 2020, Jasmine became a member of the RCH1000, a giving community in which each member makes an annual minimum \$1,000 donation, to help fund vital research projects across the RCH campus.

For Jasmine, a defining moment of her life was not just witnessing Daniel graduate from university, but also the realisation that he had defied the odds stacked against him during his early days.

"No one really realises the impact the RCH has on the community until you need its services. I believe that research is the key for a brighter future, especially for those grappling with long term illnesses," she said.

In her own words, Jasmine reflects on her family's journey, stating, "Daniel and our whole family are very grateful for the care we received at the hospital."



Jasmine Dindas

THANK YOU ASH FALLA

When Ash Falla's eight year old daughter passed away in 2007, he faced every parent's worst nightmare. Despite this, Ash turned his grief into giving, donating regularly to the RCH Foundation.

"Millie was born with major health issues yet despite that, she was a lovely, gentle and generous child. She loved school, she was incredibly social, and academically she was progressing very well. With her own physical limitations, Millie became a quiet observer and gained enormous satisfaction from seeing the achievements and progress of her fellow students," he added.

"She was determined to be involved in life as much as possible. Being supported and guided by loving family and friends enabled her to achieve way beyond expectations," said Ash.

One of Ash's most cherished memories of Millie is connected to her favourite colour – pink.



Millie at her last birthday celebration

"The day of Millie's last birthday celebration there was a bright pink car right out the front of the party venue. She asked to get a photo with it and I said, 'When you are 18, I'll buy you a pink car.' She was so happy, her smile said it all."

After Millie died, Ash was so appreciative of the care she received that he wanted to give back to the RCH. While he had donated to the Good Friday Appeal over the years, it was in 2019 that he decided to join the RCH Foundation's regular giving program, The Children's Tree, as a way of saying thank you.

"Millie's condition was complex, and all the clinical teams that were involved in her care supported Millie to be able to live her best life. This is my way of saying thank you. It's not a lot of money, but if there is any way that I can support kids like Millie, that's my incentive," Ash explained.

As well as giving through The Children's Tree, Ash has recently committed to leaving a Gift in his Will to the RCH Foundation, something he says was a "no brainer" for him.

"I think if your kids are born healthy, you are very lucky. But on the off chance you are required to go to the RCH, you've got a place that will look after your child extremely well. And we need to continue that for future generations.

"My hope is that my funds will help children get the care they need. If they can get access to the best technology, the best clinicians, the best equipment that can make their life as good as it can be for as long as they are here, that's enough for me," he said.

“ ”

**THE CARE MILLIE GOT,
CONSISTENTLY, AND FOR
HER EIGHT YEARS, WE WILL
NEVER FORGET THAT. SO,
IT IS MY WAY OF SAYING
THANK YOU.**

Ash Falla



Ash and Millie

RCH CHAMPIONS

RCH Champions are supported by generous people from across Victoria. Thank you to the inspiring people who run these fundraising initiatives and the thousands of people who support them.

A

John Agha - Super Car Sunday By The Wheel Shop

B

Bella Bajada

Sean Balchin - Santa Home Visits for the Kids

Brett Barr

Lynden Blackley - Ride for Gus

Phyllis Brown

Mr Brightside

Busy Bees Altona Meadows

C

Aaron Carter - Bendigo Christmas Lights

Bob and Marlyn Clark - Bob's Christmas Shave

Clark Street Children's Centre

Craig Family

D

Dame Elisabeth Murdoch Nursing Development Scholarship Luncheon

Zachary Di Salvo - Zac's Gift

E

East Malvern Early Learning Centre

F

Ben Fennell - Ben's Shave for Brain Cancer

Ferla Social Club

Frank Fruci - Mambo Italiano

G

Annalise Gan

Geelong Grammar School

H

Rene Hartnett Stall for Cancer Research 2022

Michael How - Running for Eilidh

Hug for Humanity - Vong Tay Yeu Thuong - Vietnamese Australians

J

Shane Jenkins - BSX2023 Shane's Head Shave

L

Oliver Lake

Shane Larsen - Zeke's Fund Christmas Lights

Johnny Luiz - Mullets for the Kids

M

MacKenzie Family Foundation

Sebastiano Motta - Art Auction

N

New Zealand Australian Punjabi Cultural Association

R

Elise Rooke

Rotary Club of Wandin

S

Anjali Sahasrabudhe

The Kyle Sheldon Memorial Fund

Kyle Sheldon Memorial Golf Day

T

Lachlan Taliana - Mullets for the Kids

The Big Roast for Cystic Fibrosis -

Kristy Aberline

Kirsty Bowness

Jo Brimelow

Kim-Marie Bromley

Jacqui Clark

Eilis O'Ferrall

The Chloe Clash 2023

V

Veer Charitable Association

W

Paul Walton's Tour De Lifestyle

Jessica Wilton

Flynn Wood - Ironman for Epilepsy

THANK YOU FRUCI FAMILY

The Fruci Family became affiliated with the RCH Foundation in 2018 when Francesco Fruci walked into the Gratitude Hub at the hospital after being profoundly moved by the exceptional care his grandson had received.

Witnessing the tireless efforts of the hospital staff and the unwavering support provided to his loved ones, Francesco knew he had to do something to give back.

His journey began with a simple act of gratitude – donating to the RCH Foundation. But Francesco's commitment didn't stop there.

Francesco and his family decided to channel their gratitude into something that meant even more to them. So, they started organising Italian dinner dances, known as Mambo Italiano.

These events not only raised funds for the RCH Foundation but also brought together families and supporters who had been touched by the hospital's care.

The Fruci family said, "We were unprepared by the amazing generosity that was given, such as the amazing sponsors that rallied behind us, and individuals raising their hands to help in any way that they could."

These gatherings became a celebration of life, a testament to the power of community and a tradition eagerly awaited by all.

With donations by the Fruci family to date having exceeded \$20,000 and supporting the purchase of state of art equipment at the RCH, they are excited to continue to give back to the hospital.

"Our plans for the future are to continue to raise funds and create awareness. We see the work we do for our events as minimal compared to the amazing work which takes place at the hospital," the family added.



“ ”

**THEY SAY IT TAKES A VILLAGE TO CREATE
SOMETHING LIKE THIS, AND WE COULDN'T BE
PROUDER OF EVERYONE FOR THEIR INVOLVEMENT.**

The Fruci family

IN CELEBRATION

Giving in celebration is a simple and personal way to mark any special occasion. Over the course of the year, many generous supporters forward gifts to support the hospital in celebration of birthdays, weddings, anniversaries, Bar Mitzvahs, Bat Mitzvahs and other special occasions.

A

Anjali's 60th Birthday
Annalise's 4th Birthday
Amelia's 1st Birthday
Amyra's 1st Birthday
Ava and Yasmin's Bat Mitzvah

C

Caron and Perry's Wedding
Cohen's 1st Birthday

E

Elise's Baby Brunch
Emerson's 1st Birthday
Ezra's 5th Birthday

F

Franca's 50th Birthday

G

George's 7th and Dennis' 5th Birthday
Celebration

I

Ian's 8th Birthday
Ivy's Birthday Fundraiser

K

Kiara is turning 1

L

Anderson and Harvey L Birthday
Leo's 1st Birthday
Milly Lucas' 1st Birthday

M

Maddie's 6th Birthday
Maia's 7th Birthday
Mia's Bat Mitzvah
Miss M turns 1

N

Nikolas and Angie's Birthday
Noah's 1st Birthday

P

Patrick's 1st Birthday
Penny's 1st Birthday

R

Rafi's 3rd Birthday

T

Happy Birthday Tess

S

Samuel's Bar Mitzvah
Scarlett's 1st Birthday
Sonny's 2nd Birthday

V

Vivienne's 1st Birthday

Z

Ziggy's 1st Birthday



Mia and her mum Donna at her Bat Mitzvah

IN MEMORY

Giving in memory is a meaningful way to pay tribute to a loved one who has passed away. During the last financial year, many families created a lasting legacy by requesting donations to the RCH Foundation. We acknowledge these loved ones below.

A

Charlotte Jayne Alexander
Kathleen Margaret Appleton
Christian (Kishy) Arzanas
Kye Azimi

B

Swade Barkham
Cheydan Tori Barr
Christine Blackie
Jermain Robert Bourbon
Brian Burns

C

Gracie Camps
Anthony Carrio
Mackenzie Casella
Mary Yvonne Collins
Constantinos Cuartomartsidis
Meryen Cukur

D

Georgias Davernaris
Deepthi

E

Wilma Ellett

F

Doreen Fallon
Alexandria Lily Filippetto

G

Pietro Giacobbe
George Noel Gleeson
Margaret Gough

H

Brian Hawkens
Poppy Linda Heka
Denzil Hookens
Vergine Houzekian

K

John Kelberg
Justin Kelly
Dorothy Kenny
Sophia Kokkinov

L

Aidan Leonard
Melpomene Lidis
Aldo Lo Bianco
William Leopold Lynch

M

Karen Joyce MacDonald
George Mastromixalis

P

Lucia Pagliarello
Spiros Palavras
Abigail Haven Palm
Sotirios Pappaionnou
Phoebe Patsikatheodorou
George Pavlou
Naomi Philpot
Biruta Plukss

R

Robert Keith Read
Kevin Thomas Reidy
Ravi Ride
Marjie Riley

S

Vincenzo Salemi
Guisepina Sansonetti
Giuseppina Schiavone
Filomena Serrano
Roderick John Smith
Pippa Strano
Vinny Roy Symes

T

Xanthos Takos
Girolamo Talarico
Christos Tsirkas
Leanne Turner/Bradley

W

Bertram 'Bertie' Whiting

Z

Zoi Zaharakis
Heaven Zerai

BED SPONSORSHIP

By generously sponsoring a bed in a hospital ward of their choosing, our donors make a difference to an area of the hospital they feel passionate about or have a personal connection with.

A

AA Holdings Pty Ltd
Charlotte Jayne Alexander
Amazon Australia
Sophia Andrianopoulos
APT Travel
Arch Insurance
Aruba Espresso @ RCH
Australian Pacific Touring Group
Austunnel Pty Ltd

B

The Baby Emma Foundation
Big Bedding Australia
BLC Aesthetics
Bowery Capital
Brave Goose Vineyard
Britax Childcare Pty Ltd

C

CAF America
John and Patricia Cerini
Ashwini and Sonia Chandra
for Veena Chandra
Club 27 Inc
Commonwealth Superannuation
Corporation
Zoë Sylvie Judith Craig

D

Valentina De Maria
Riley Docker and Family

E

Ensemble Strategy Pty Ltd
Environmental Health Solutions

F

Five Squared Property Group Pty Ltd
Cathleen and Wesley Fry

G

GlobeWest
GNT Fine Wines
Louie Grech
Anuradha Gunasekharan
Ed and Ada Gurgiel

H

The Holckner Family
Hug for Humanity - Vong Tay Yeu
Thuong - Vietnamese Australians
Sue Hunt AM

J

Jakob Frenkiel Charitable Trust

K

K&S Corporation
K2LD Architects
Keung To Australia Candies
Khan Family

L

Philip and Susan Lewis and Family
- Olivia's Gift
Yanzhu (Toby) Li
Luca Miraglia Foundation

M

M&S Transport
Madgwicks Lawyers
McGrath Estate Agent - Croydon
Melbourne Architectural
Constructions
Melton Country Club
Mind Blowing Films Pty Ltd
Motateam.com
David and Tamara Murkies for Zara
Myer Community Fund

N

Naked Wines
Nelson Alexander
Charitable Foundation
The Norman Family

O

Oak Capital
Nora Eibhlin O'Dwyer
O'Shannassy Family

P

Anthony Pasquariello
Christine Phillpot and David Evans
Prize Pool Australia

R

Rinku, Vanya and Gupta Family
Riverlee Foundation
Rotary Club of Sunbury

S

Seamless SMSF
Miller James Schmidt
South Food Group
Noah Souvatzis
Sporting Chance Cancer Foundation
Spotlight Foundation
Spring Gully Animal Hospital
St. Mary's Indian Orthodox Cathedral
Franca Strano
Strathmore Community Bank –
a branch of Bendigo Bank

T

Mabel Barret Lee Tan
S.T. Tan
Tapanda Pty Ltd
Team Jack
That's Amore Cheese
Theissling Family
Tile Importer
Isabella Claire Tripp

U

Universal Steel Pty Ltd

V

Vincent Vu

Y

Yi & Li Family Trust

Z

Weihaio Zhang



Bed sponsors Riley Docker (centre) and family



Christos Gonis (right) and the team from Tapanda

THANK YOU TAPANDA

Tapanda is a Melbourne based, nationally operating service provider that offers assessment and repair solutions across the insurance and fleet sectors. Their commitment to supporting the RCH Foundation not only reflects their corporate values but also stems from deep personal connections.

As fathers, it was an easy decision for Tapanda Directors Christos Gonis and Rod Wood to support the RCH Foundation. They understand the importance of being part of something bigger that positively impacts children, especially under challenging circumstances.

"We sought to find a Foundation that diligently supports their community, often in ways that might go unnoticed but remain critically important," said Christos.

By sponsoring a bed in both the Banksia and Kookaburra Wards, Tapanda has been able to make a vital difference to the lives of sick children and their families at the RCH, while fostering a culture of compassion and philanthropy within their organisation.

"There is a genuine sense of pride amongst our team when it comes to this support, and we take the opportunity to recognise and celebrate the support as often as we can internally. The opportunity to be able to give is truly the greatest gift you can receive," said Christos.

Tapanda hopes to grow its current level of support for the RCH through the bed sponsorship program and in other ways.

"Our organisation has witnessed significant growth in the last 12 months. As our team grows, we continue to explore ways in which our support can increase, and also where we can involve our broader team in the support we provide within new opportunities and initiatives," explained Christos.

Christos warmly recommends the RCH Foundation's Bed Sponsorship Program to other organisations looking to give back.

"For other organisations seeking to make a daily impact and difference, the RCH Foundation is an exceptional choice that should not be overlooked," he said.

THANK YOU ALI KHAN FAMILY

When Bilal and Melanie's daughter, Aaliyah, was born with scoliosis, a condition that affects the curvature of the spine, they never thought they'd end up spending months in the Cockatoo Ward at the RCH.

Three weeks before Aaliyah's third birthday, she fell ill with an infection to a cyst on her spinal cord. She had to undergo months of antibiotic treatment before delicate surgery on her spinal cord could take place.

Thankfully, the surgery was a success and despite requiring ongoing care, including annual MRI scans and occupational therapy to improve functioning in her right hand, Aaliyah is now a vivacious and joyful four year old.

"I love how determined and dedicated Aaliyah is. Just hours post surgery she was up and about walking around for as long as her body could take," Bilal shared.

To give back to the RCH, as a gesture of thanks for the exemplary care Aaliyah received, Bilal and Melanie decided to sponsor two beds on Cockatoo. One is in Aaliyah's name, the other is in the name of her brother Ayedin.

The funds donated through the Bed Sponsorship Program have been used to support music therapy for patients on Cockatoo, as well as purchasing educational play mats specifically designed for paediatric care.

Bilal and Melanie knew that their contribution to the Bed Sponsorship Program would contribute to ensuring the hospital had the resources needed to provide the best care possible.

"I remember meeting many parents who were going through the worst time of their lives, and that was when I knew we wanted to do whatever we could to try and ease the pressure of being at the RCH," Bilal said.



Aaliyah Ali Khan



Melanie and Bilal with children Ayedin and Aaliyah

CORPORATE FUNDRAISING

Thank you to all of the generous businesses that held fundraisers in support of the hospital throughout the year.

A

AA Holdings Pty Ltd
Amazon Australia
Alloys International

B

Baringo Food and Wine
Bound and Tied Café

C

Co.Lab Audio Visual
Connection 2 Sports
Croydon Medical Centre

D

DHL Express
The patrons of the Drysdale Hotel

E

EA Developments

F

Flatline Concreting

G

GNT Fine Wines
Greythorn Amcal Balwyn North

K

K&S Corporation Ltd
K2LD Architects
Kmart

L

Lazy Moe's Restaurants Head Office
Lazy Moe's Restaurants Bendigo
Lazy Moe's Restaurants
Caroline Springs
Lazy Moe's Restaurants Tullamarine
Leeds Club

M

Madgwicks Lawyers
McGrath Estate Agent - Croydon

P

Parkhill Medical Centre
Paypal Giving Fund
Plenty of Games

R

Riverlee Foundation

S

Sculli's IGA Express
Selandra Rise Amcal Pharmacy
Slater And Gordon
Specsavers
St. Annes Seaford

T

The Co. Accountants &
Business Advisors
The Cove Family Medical Centre
The Greatest Gift Co
The Royal Oak Hotel
Their Care

W

Woodhouse Grove
Healthcare Pharmacy

THANK YOU K2LD ARCHITECTS

For David and Tisha Lee, Directors of the international architectural and interior design practice K2LD, their journey with the RCH began from the very heart of their own household.

In 2000, while residing in Singapore, David and Tisha's son, Aaron, who was eleven months old at the time, was diagnosed with neuroblastoma, an exceptionally rare form of cancer.

"We were desperately seeking answers from around the world and eventually found ourselves in Melbourne. It was here at the RCH that Aaron was treated with love and kindness," David recalled.

Despite the challenges, the Lees found solace in the people they met at the RCH.

"The seasons changed and every visit to the RCH, whether on wet or cold days, didn't matter. What mattered was the people that defined the place," said David.

In 2016, after a fifteen year long journey, Aaron received a clean bill of health. While filled with gratitude, the Lees left the hospital with a mix of emotions.

"Whilst we were grateful for Aaron's discharge, we left with a feeling of sadness and a feeling of not wanting to depart from this place that gave us hope," David reflected.

The Lee family was determined to give back to the hospital that had played such a pivotal role in their lives.

"During this journey with Aaron, we looked for ways to contribute to the hospital."

This desire to give back led them to the RCH Foundation.

Over the years, K2LD have been active supporters of the RCH in various ways. They have sponsored beds, provided support for the music therapy program, and contributed to the RCH150 Art Trail, with their total contributions exceeding \$56,000.

On 15 June 2023, K2LD organised a fundraising event that raised an impressive \$17,885 in a single evening. These funds were dedicated to the hospital's garden program, designed to provide therapeutic healing through interaction with nature for patients, families and staff.

At the event, Dan Wheals, Therapeutic Garden Coordinator at the RCH, highlighted the importance of creating engaging hospital gardens that foster feelings of achievement, togetherness, self worth and empowerment.

The purpose built gardens at the RCH feature elements like trees, bushes, seating, bird baths, a sandpit and a playground. These spaces serve as havens where children can find solace away from the clinical environment, allowing them to be themselves.

"The presentation by Dan on the therapeutic garden program was inspiring and heartfelt – some of our friends, consultants and business partners who attended the event are still talking about it today. Dan's positive nature was highly infectious, and it showed his passion about the program's potential in aiding the children's recovery. It is a testament to the calibre of staffing and leadership within the hospital," Tisha shared.

Tisha and David expressed their excitement about the impact of these funds.

"We can't wait to witness the impact of these funds on the many lives touched by the RCH. The partnership between K2LD and the RCH Foundation has lasted since 2010 and we want to continue to see it move from strength to strength," they shared.

As the hospital continues to evolve and innovate, it is corporate partnerships like these that truly make a difference in the lives of those who need it most.

"We have the best children's hospital in the world. With the kind support of the community, Aaron is one of the many children who have benefited from a legacy of giving."



David and Tisha Lee (left) with Kai Siow at their June 2023 fundraising event



Guests enjoy the K2LD fundraising event

CORPORATE DONATIONS

We are grateful to our corporate donors who have supported us through monetary and in-kind donations.

A

AA Holdings Pty Ltd
AECOM
AMPOL
Arch Insurance
Australian Communities Foundation
Austunnel Pty Ltd

B

Bell Plaster Supplies
Better Value Pharmacy Box Hill
Bowery Capital
Britax Childcare Pty Ltd

C

Chair Solutions VIC Pty Ltd
Comtex Pty Ltd

E

Entertainment Publications
of Australia

G

GlobeWest
GNT Fine Wines
Good Company

H

Holckner Family

K

K&S Corporation Ltd
K2LD Architects
Kmart

L

Lifestyle Communities
Chelsea Heights
Little Stars Early Learning
& Kindergarten

M

Maxwell & Williams
M&S Transport
McGrath Estate Agent - Croydon
Melbourne Architectural
Constructions
Melbourne City Lexus
MPE Group

N

Nelson Alexander Charitable
Foundation
Nutricia Australia

O

Oak Capital
One Harvest

P

Pitcher Partners Melbourne
Pulse Automation Solutions

S

ShareGift Australia
South Food Group
Specsavers
Spotlight Foundation
Strathmore Community Bank
- a branch of Bendigo Bank

T

Tapanda Pty Ltd
Taylored Accounting
The Baby Emma Foundation
The Glen Asian Bakery

U

UGroup Media

W

William Buck (VIC) Pty Ltd



RCH patient, Fraser

WORKPLACE GIVING

Thank you to employees from companies who choose to make regular donations to the RCH Foundation through their pre-tax pay. Many business partners enhance the collective impact of their Workplace Giving program through donation matching, fundraising, volunteering, skill sharing and in-kind support.

A

A & L Windows and Doors
Achievers
ADP
AECOM
Agilent Technologies Australia
AGL Energy Limited
Assurant (US)
Atura Hotels
Australia Industry Group (AIG)
Ltd Pty
Australia Post - Head Office

B

Bain & Company
Bank Australia
Bank of Queensland
Bank of Queensland - Abbotsford
Bendigo Bank
Bendigo Bank Limited
Benojo
Blackmores Group Ltd
Bluescope (Australia)
Bluescope LYSAGHT
Bluescope Steel Limited
Boeing Aerostructures Australia
Bupa Australia Group
BVGive

C

CAF America
Campari Australia
Charities Aid Foundation (CAF)
Ciena
Cisco Systems
Citi Australia
CMV Group
Coca-Cola Europacific Partners
Australia
Commonwealth Superannuation
Corporation
CommUnity platform
CSL GivingForGood

E

Elasticsearch
Employees Of Toyota Australia
Ernst & Young
Event Hospitality & Entertainment
Limited (EVT)

F

F5
Findex

G

Global Rewards Solutions
Google Australia
Greater Union
Guo Joint

H

Hewlett Packard Enterprise - VIC
Howden Group Holdings Limited

I

IAG (VIC)
IFM Investors
IRESS

J

JBS Australia Pty Limited
Jemena

K

Karma Currency Foundation
Kognitiv Australia Pty Ltd
Kosciusko Thredbo Resort

L

LJ Hooker Swan Hill
Louis Vuitton Australia Pty Ltd

M

Macarthurdist
Macquarie Group
Medibank Private
Melbourne Water

N

National Australia Bank Limited

O

Okta
Optus - Corporate Office
Oracle Corporation
Origin Energy Limited
Origin Foundation

P

Pinnacle Investment Management
PWC Services Trust

Q

Qantas Airways - Head Office
Qantas Airways Limited
QT Hotels & Resorts
QT Melbourne

R

RACV Limited
REA Group Ltd
Rydges Fortitude Valley
Rydges Horizons Snowy Mountains
Rydges Melbourne

S

Salesforce Australia Pty Ltd
SAP Australia
Schneider-Electric
Slumbercare Bedding (Aust) Pty Ltd
Smartsalary
South East Water Limited
Specsavers Pty Ltd
Splunk
Sugar Australia Pty Ltd
Suncorp Group
SuperChoice

T

Telstra Foundation Limited
The Victoria Hotel
Toyota Finance Australia Limited
Toyota Motor Corporation
Australia Limited

U

Unisuper Management Pty Ltd

V

VIVA Energy Australia

W

Westpac Group - Community
Engagement
WEX Australia Pty Ltd
Wilmar Foods
Workhuman

Z

Zoos Victoria

AUXILIARIES

The RCH Auxiliaries have proudly supported the RCH since their establishment in 1922. Today, over 50 Auxiliary groups across the state are actively fundraising for the hospital. Their dedication and goodwill raised over \$1,398,899 for the 2023 Good Friday Appeal.

A

Absent Friends Auxiliary

B

Bright Starts Auxiliary

Broadmeadows Auxiliary

C

Cancer Crusaders Auxiliary

CIKA

Caring Friends of

Cystic Fibrosis Auxiliary

Caroline Auxiliary

CasKids Auxiliary

Charli's Angels Auxiliary

ChIPSXiliary

Courage 4 Kids Auxiliary

Cystic Fibrosis Research
Trust Auxiliary

D

Dirty Hands Happy Hearts Auxiliary

E

Ezy Breathing Auxiliary

F

Footscray/Yarraville Juniors Auxiliary

Friends of the Children's Bioethics
Centre (CBC) Auxiliary

Friends of Transcend

G

Geelong Auxiliary

H

Hawthorn Auxiliary

Heart Throb Auxiliary

Heart to Heart Auxiliary

I

Inverloch Diabetic Unit Auxiliary

K

Kooyong Lawn Tennis Club Auxiliary

L

LARCH Auxiliary

League of Former Trainees (LOFT)

Let The Children Play Auxiliary

M

Mish Mish Women's Auxiliary

N

Neonate Mates Auxiliary

P

Pankina Auxiliary

Parkville Auxiliary

PremBubs Auxiliary

President's Fundraising Network

R

RCH Volunteers Auxiliary

Roxburgh Park Auxiliary

S

Save my Platelets Auxiliary

SMILE Auxiliary

South Western Auxiliary

Southern Rainbows Auxiliary

St Kilda Auxiliary

StroKidz Auxiliary

T

Templestowe/Yarra Valley Auxiliary

The Melbourne Sinfonia Auxiliary

Trailblazers Auxiliary

V

Victorian Quilters Very Snuggly Quilt
Auxiliary

Viva RCH Auxiliary

W

Wangaratta Auxiliary

Waverley Auxiliary

Werribee Ladies for Kids Auxiliary



Cancer Crusaders Auxiliary members Ruth Murray,
Sharon Markovic and Peter Murray

THANK YOU PHYLLIS BROWN



Phyl after receiving the
2013 Madge Tate Service Award

If you speak to anyone who knew the late Phyllis Brown, or Phyl as she was more affectionately known, you will likely hear them describe her as passionate, kind, everyone's Gran, and like a warm hug.

Before she passed away in January 2023, Phyl was also known as the President of Heart to Heart Auxiliary, and the longest serving volunteer through the RCH's Volunteer Program.

Phyl's involvement with the RCH began in 1979 when she signed up to be a volunteer. Her daughter Diane thought that it might suit her given her great love of children. Phyl had also recently lost her niece to neuroblastoma, so wanted to make a difference to other children like her.

As a hospital volunteer, she worked in the creche, supported Child Life Therapists, then known as play specialists, in the orthopaedic ward, and even spent time as an educational hospital guide for school groups.

She also became one of the infamous splint ladies, a group of volunteers who create the small splints used to keep patients' arms steady and straight when they need IV drips.

"Phyl was passionate about everything – the hospital, her family, her grandkids, her great grandkids. The hospital became so much a part of who she was... it was her thing," said Kiley Kavanaugh, Manager of the RCH's Volunteer Program.

In 1989, Phyl took on an additional role in support of the RCH, becoming a founding member of Heart to Heart Auxiliary.

The Auxiliary was formed by two of Phyl's fellow RCH Volunteers, Pam Burch and Judy Lundy, after they were approached by Dr John Wilkinson, the then Director of Cardiology. He suggested they establish an Auxiliary to support cardiac patients.

In 2004, Phyl became President of Heart to Heart. Raising more than \$385,000 since 1989, the Auxiliary has supported vital projects and initiatives across the hospital, including the purchase of a heart lung bypass machine, a defibrillator monitor and an oxygen analyser.

"It meant the world to Gran to raise money for the hospital. In the early days she did shopping tours and worked in the Auxiliaries Gift Shop. She would also do stalls at the hospital, as well as at the local shops near her house," said Phyl's granddaughter Lisa.

In 2005, Phyl was recognised by the Auxiliaries as a Living Treasure, and in 2013 she received the Madge Tate Service Award.

"I remember the day she received the Madge Tate Service Award. She had no words, which was never a flaw for Gran – she could talk anyone's ear off. That itself probably showed just how much it meant to her," said Lisa.

For those around her, Phyl's passion for the hospital was second to none.

"Phyl devoted the later part of her life to the hospital, and it was something she thoroughly enjoyed. After she lost Ian, her late husband, she adopted this cause to fill her life. I found her quite an inspiration," said Jo Scully, Treasurer of Heart to Heart Auxiliary.

But for Phyl's family, it was what she got out of volunteering that meant the most to them.

"Gran made many lifelong friends during her time at the hospital who were there to support one another throughout various life stages and share in many memorable moments," said Lisa.

In a 2020 interview with the RCH, Phyl herself reflected on her time supporting the hospital.

"I think my proudest achievement is the work I do as President of Heart to Heart Auxiliary. I've met many families over the years, who really appreciate you being a good listener and being someone they can open up to. Although I'm very proud that our stalls and raffles raise important funds for the cardiac unit, I think being there for families is what I'm most proud of."



GOVERNANCE



FINANCIALS

EVERY DOLLAR COUNTS

We are proud to share the 2022/2023 results as well as the total asset base, our forward granting commitments and how we invest funds for the future. Whether it's supporting our four funding areas, helping us save for multi-year projects or allowing us to raise more funds for the RCH's future, every cent we receive is helping to give seriously ill children the chance of a better future.

2022/2023 REVENUE SNAPSHOT

The total revenue for 2022/2023 was \$68.6 million. Revenue is reported by principal funding source. Finance and investment income includes \$12.9 million in unrealised market movements for the financial year ending 30 June 2023. As we move away from the COVID years, we received significant levels of generous donations in all of our donor categories.

GRANTS AND DISTRIBUTIONS

During the year \$56.3 million was approved in funding, including 47 new grants and eight variations to existing grants. Total distributions to the RCH of \$44.6 million were made in support of excellence in clinical care and equipment, research, leadership and training. Many of the grants extend over several years and this is reflected in the difference between granting decisions made and total distributions.

ADMINISTRATION AND FUNDRAISING COSTS

Total administration and fundraising expenses were \$8.1 million. This is a result of the cost associated with fundraising, managing the grants process and ensuring that appropriate controls and governance procedures are maintained and strengthened.

CORPUS AND INVESTMENTS

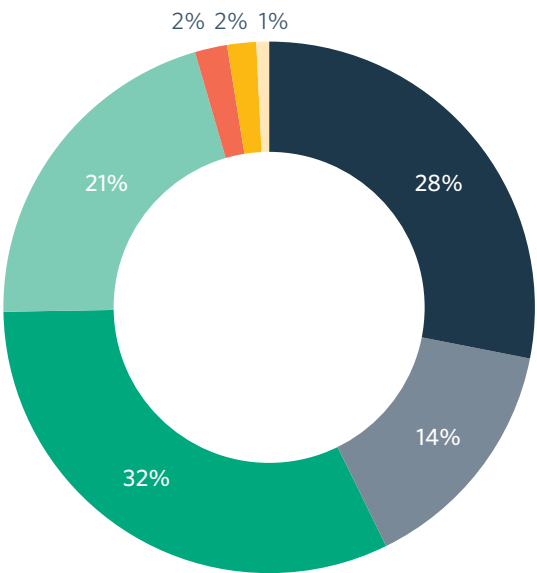
The RCH Foundation aims to provide long term sustainable support for the hospital. Some of our biggest grants require funding over many years. The RCH Foundation has existing forward commitments of over \$169.5 million over the next five years and is always planning for how future commitments will be supported. The RCH Foundation's financial corpus provides an important base to support future funding commitments for generations of families to come.

The RCH Foundation is committed to the highest standards of accountability and transparency. We report annually to the ACNC, ASIC and full Annual Financial Statements are available from the RCH Foundation office.

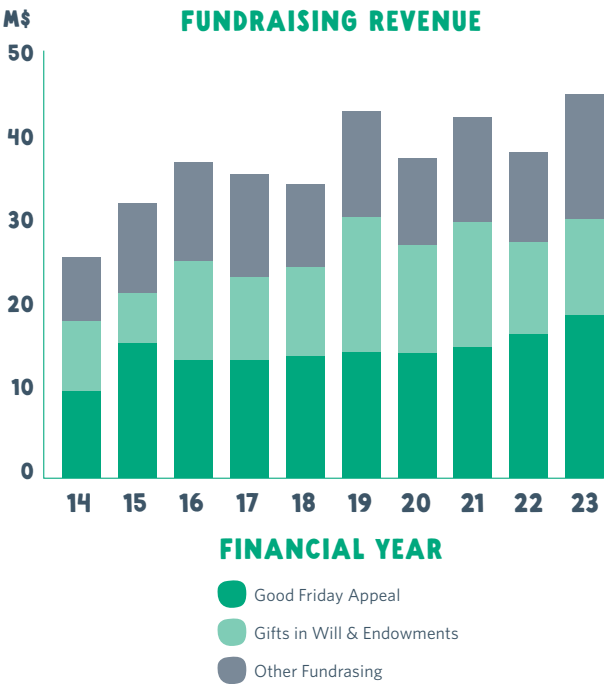
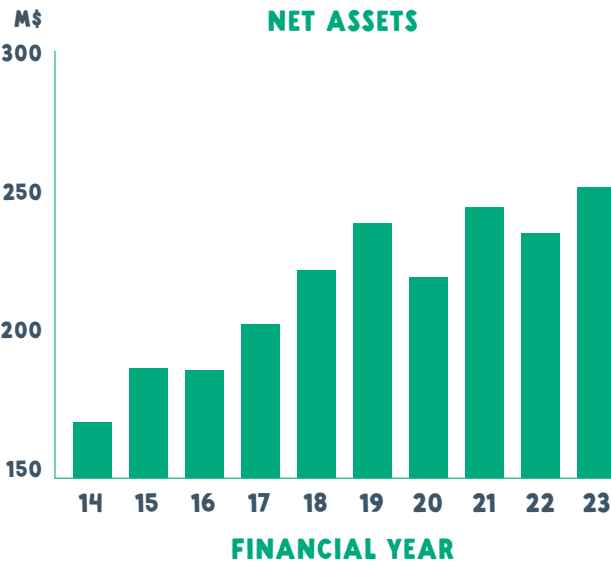
HOW THE FUNDS WERE RAISED

SOURCES OF REVENUE

	(\$)
Good Friday Appeal*	19,252,799
Bequest and Estate income	10,059,546
Finance Investment income	21,938,933
General donations	14,239,285
Trusts and Foundations	1,356,380
Rental income	1,197,284
Other	532,944
Total	68,577,171

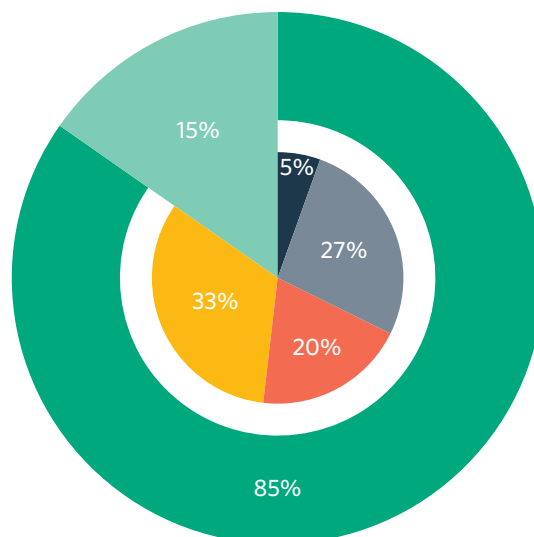


* Good Friday Appeal revenue is net of costs incurred in conducting the Appeal. Total funds raised were \$23,061,320.

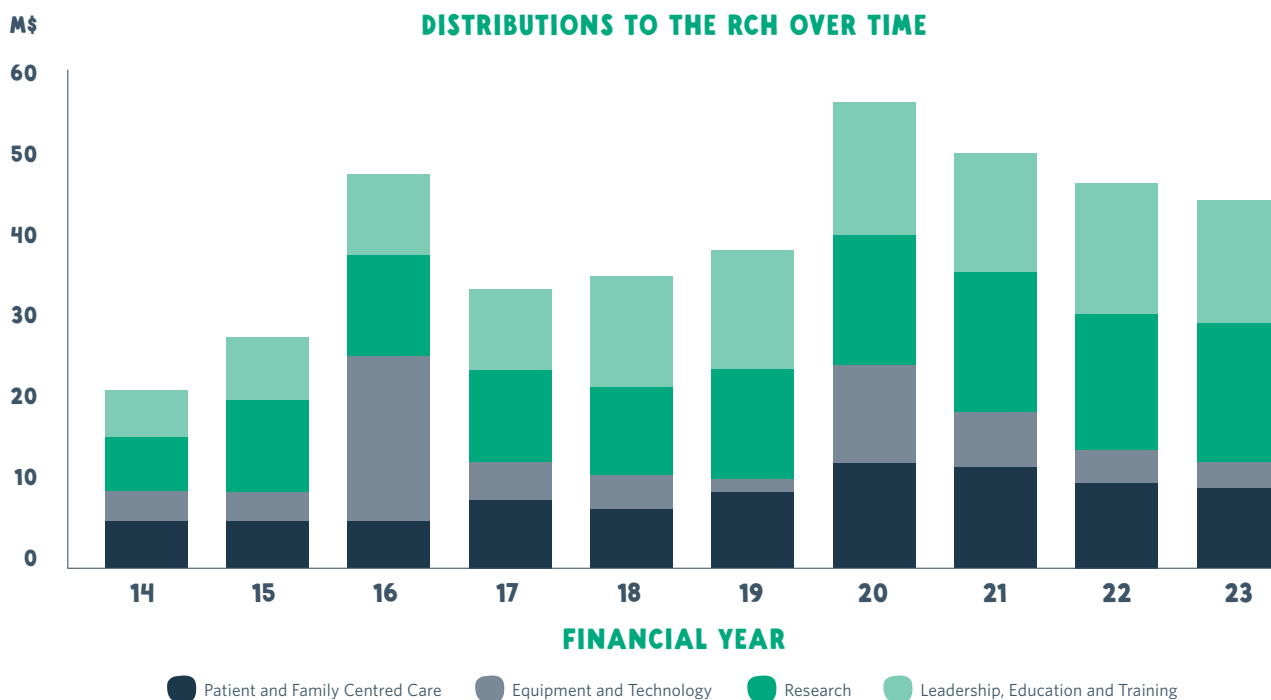


WHERE YOUR MONEY GOES

● Distributions to the RCH	\$44,653,411
● Equipment and Technology	\$2,882,530
● Leadership, Education and Training	\$14,127,903
● Patient and Family Centred Care	\$10,321,103
● Research	\$17,321,875
● Administration and fundraising costs	\$8,063,145
Total	\$52,716,556



All donations to the RCH Foundation support four key areas at the hospital, enabling access to life saving equipment and technology, supporting ground breaking research, developing medical minds through leadership, education and training, and supporting the best in patient and family centred care.



INVESTMENT MANAGEMENT AND PHILOSOPHY

The RCH Foundation Investment Committee manages the RCH Foundation's corpus. The RCH Foundation's corpus includes general funds which are available for immediate distribution; endowment funds which donors have specified to be invested and income only distributed; funds which have been given for special purposes; and retained earnings. The RCH Foundation's Investment Strategy is underpinned by a philosophy of diversification across both growth and defensive assets. The Investment Committee utilises extensive benchmarking and research in assessing performance and risk parameters and balances liquidity requirements with longer term investments to enable grant funding to the hospital for both its short term and long term granting requirements.

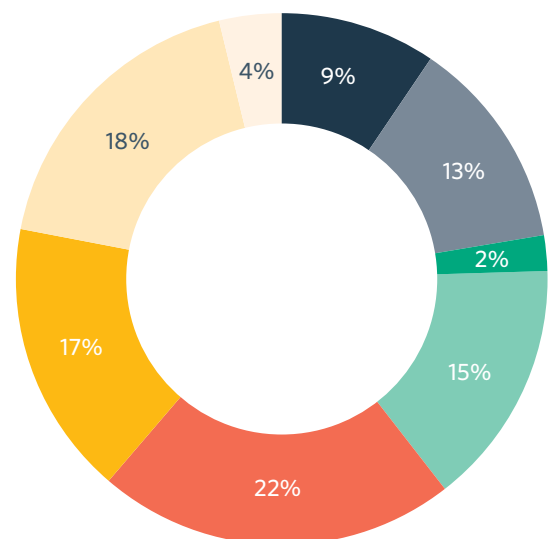
The RCH Foundation has a track record of exceeding its performance objective of a consumer price index (CPI) of greater than four per cent over the long term. The financial year ending 30 June 2023 generated a 9.45 per cent return after fees. During the year, the RCH Foundation took advantage of its Growth Asset Allocation and performance generated from its Australian equity and global equity asset allocations. Fixed interest and bond holdings assisted in stabilising the portfolio when markets were volatile.

INVESTMENT PERFORMANCE

1 YEAR	2 YEARS PA	3 YEARS PA	4 YEARS PA	5 YEARS PA
9.45%	5.39%	9.56%	7.84%	7.91%

INVESTMENT ASSET MIX – ACTUAL ASSET ALLOCATION (AAA)

Cash and term deposits	9%	\$22,388,378
Specialist credit	13%	\$30,892,627
Fixed income	2%	\$5,134,858
Australian equities	15%	\$35,952,981
International equities	22%	\$51,703,266
Infrastructure	17%	\$40,030,151
Private equity	18%	\$43,321,134
Property	4%	\$9,080,000
100%		\$238,503,395



BOARD OF DIRECTORS

RICHARD LEDER OAM – CHAIRMAN

Richard Leder OAM is the Head of Commercial Litigation at the law firm Wotton + Kearney. He specialises in commercial litigation and media law. He represents a range of media institutions including Channel 7 Melbourne and acted for the actress Rebel Wilson. He also advises the Catholic Archdiocese of Melbourne and represents corporate and professional organisations and community welfare groups.

Richard was appointed Chair of the RCH Foundation in October 2022 having previously held the position of Deputy Chair since 2003. He serves on the Executive and Finance, Investment, Remuneration and Grants Committees of the Board. He also sits on the RCH1000 committee.

Richard was the Deputy Chair of the Mt Buller and Mt Stirling Alpine Resort Management Board from 2018–2022 and serves on the boards of Australian Friends of Asha, The Conversation Media Group and the Melbourne Press Club.

In June 2019 he was awarded a Medal of the Order (OAM) of Australia for his contribution to the community, recognising in particular his long contribution to the RCH Foundation.

RCH Foundation Director since 1998 and Chairman since 2022.

DR GILLIAN SPARKES AM – DEPUTY CHAIR

Dr Gillian Sparkes AM has a career that spans the private, public and not for profit sectors having worked three decades in industries that interface with the environment and community, before becoming a senior public servant. Gillian has held senior roles with both the Australian and Victorian Governments including Deputy Secretary Victorian Department of Sustainability and Environment and Chair of Sustainability Victoria.

Gillian is currently Victoria's Commissioner for Environmental Sustainability, an independent statutory role that reports and advises government and the community on the environment. Other roles include Chair of the Board, FrontierSI (formerly the CRC for Spatial Information), Commissioner of the Victorian Building Authority Board, board member of Industry Capability Network, Victoria and a Trustee of the Royal Society of Victoria.

Gillian holds a PhD in Applied Science, a Masters of Business Administration, is a Fellow of the Australian Institute of Company Directors, a National and Victorian Fellow of the Institute of Public Administration Australia, an Honorary Fellow of Monash University and member of the Monash Sustainable Development Institute Advisory Council. Gillian was recognised as one of the Top 50 Victorian Public Sector Women in 2020 and recently awarded an Honorary Doctor of Science from Swinburne University of Technology. Gillian was appointed as a Member of the Order (AM) in the

General Division of the Queen's Birthday 2021 Honours for significant services to environmental sustainability, and to public administration.

RCH Foundation Director since 2015 and Deputy Chair since 2022.

ANDREW ANDERSON

Andrew Anderson is the Director of Broadcast Operations at the Seven Network. He followed his passion for television at age 16 beginning a 45 year television career at Channel 7 in Melbourne in 1978. Andrew has worked on Seven's biggest telecasts as a technician, operator, manager, and television executive including the Olympic Games, AFL, Supercars, Horse Racing, the Australian Open Tennis, Seven News and Sunrise.

Starting as a technician, Andrew moved through various operational areas. He became Seven Melbourne's first programming and presentation manager in 1987 which was part of the transformation of the Seven Network from a series of local stations to a network based operation. Andrew also took an active role in the development of the revival of local live comedy and variety television resulting in the hit shows, Fast Forward and Tonight Live.

In 1992 Andrew was promoted to Network Presentation Manager at Sevens' Sydney HQ. He led the transition to full automation introducing operational efficiencies in 1994 across Australia. He then spent two years as Director of Programming on the OptusVision movie channels for the then start-up of PayTV in Australia.

Andrew returned to Seven in 1998 to helm the technical project design and implementation of the Melbourne Broadcast Centre which transitioned the Seven Network to digital and centralised all channel playout to Melbourne, a first for Australian commercial television. He led the creation of the Martin Place television facility (Brekky Central) and more recently the project to relocate the operations to Eveleigh, the centralisation of Sevens' regional Queensland channel operations to Melbourne, the introduction of multichannel operations in 2010 and the introduction of high definition broadcasting.

In 2019 Andrew was part of the team which formed NPC Media, a joint venture with the Nine network. He managed the project that consolidated all of Seven and Nine channel playout to one facility in Sydney. Andrew is a current Director of NPC Media PTY LTD, he has completed his AICD training and is a member of the Australian Institute of Company Directors.

RCH Foundation Director since 2023.

PROFESSOR JAMES ANGUS AO

Professor James Angus AO is an Emeritus Professor and Honorary Professorial Fellow in the Doherty Institute and Department of Biochemistry and Pharmacology in the Faculty of Medicine, Dentistry and Health Sciences (MDHS), University of Melbourne.

In July 2013 he completed a 10 year term as Dean of the Faculty of MDHS at the University of Melbourne. Before becoming Dean, he was Professor and Head of the Department of Pharmacology and Deputy Dean of the Faculty of MDHS. At the University of Melbourne, James has been President of the Academic Board (2000-2001), Pro Vice-Chancellor (1999-2001) and member of University Council (1999-2001).

James was awarded the Gottschalk Medal of the Australian Academy of Science (1984), is a Fellow of the Academy (FAA) and has been a member of its Council. He is an Honorary Fellow of the Australian Academy of Health and Medical Sciences.

In 2003 he was awarded Australia's Centenary Medal for contribution to Pharmacology and the Community. James was a First Vice-President of the International Union of Pharmacology (IUPHAR) and was President of the Australasian Society of Clinical and Experimental Pharmacologists and Toxicologists. From 2009-2011 he was President of Medical Deans Australia and New Zealand.

His current roles include Lieutenant Governor of Victoria from November 2021; Director, Jack Brockhoff Foundation; Chair, Campus Council at the RCH; Director, Science Australia Gender Equity Ltd; member Melbourne University Publishing Advisory Board and Chair Governance Board Cumming Global Centre for Pandemic Therapeutics.

He was appointed an Officer of the Order of Australia (AO) in 2010 for distinguished service to biomedical research, particularly in the fields of pharmacology and cardiovascular disease, as a leading academic and medical educator, and as a contributor to a range of advisory boards and professional organisations both nationally and internationally.

RCH Foundation Director since 2020.

PETER BLUNDEN

Peter Blunden is the National Executive Editor of News Corp Australia. In a career spanning more than 45 years with the company, Peter has held senior editorial positions with several of Australia's biggest newspapers, including The Australian, the Herald Sun and the Adelaide Advertiser. Peter has served as editor, editor in chief and managing director of the Herald and Weekly Times in Melbourne, which has been his home for the past 25 years.

Peter was Victorian Managing Director for eight years with

responsibility for all News Corp print and digital mastheads in Victoria including the Herald Sun, Sunday Herald Sun, the Weekly Times, Leader Community Newspapers and the Geelong Advertiser Group, before which he served five years as managing director of the Herald and Weekly Times and eleven years as editor and editor in chief of the Herald Sun.

Peter edited the Adelaide Advertiser for more than five years, held various senior positions with The Australian, and was founding editor of The Australian's colour magazine in 1988. His career with News Corp Australia has taken him from Sydney to Canberra, Adelaide and Melbourne. Peter was inducted into the Victorian Media Hall of Fame in 2014, and was awarded a Centenary Medal for services to the media industry in 2001.

Peter is a Director of the Herald and Weekly Times, the RCH Foundation, the Good Friday Appeal, and a committee member of the Moonee Valley Racing Club.

RCH Foundation Director since 2012.

TIFFANY FULLER

Tiffany Fuller is an experienced independent, non-executive director with over 10 years' experience in public, private and philanthropic board roles.

Tiffany's prior executive roles spanned careers in chartered accounting, corporate finance, funds management and investment banking with Arthur Andersen and Rothschild, both in Australia and globally, where she developed extensive skills across corporate and strategic advisory, management consulting, private equity and mergers and acquisitions.

Tiffany currently sits on the boards of Computershare Limited, Washington Soul Pattinson and Company Limited and Australian Venue Co Limited where she is also either Chair or member of a number of Board Sub-Committees, including Audit, Risk and Remuneration.

Tiffany has held multiple philanthropic roles including at the Lord Mayor's Charitable Fund and the Snowdome Foundation.

Tiffany holds a Bachelor of Commerce from the University of Melbourne and is a qualified Chartered Accountant and a Graduate of the Institute of Company Directors.

RCH Foundation Director since 2020.

FELICITY GREEN

Felicity is the Co-founder and Director of for-purpose strategy firm, Ensemble Strategy. She has dedicated her career to helping bold leaders create strategies for a better world. Springboarding from corporate management consulting at Grant Thornton Australia, Felicity was an early entrant to the for-purpose advisory market, helping to launch Spark Strategy. She has spent the last decade advising clients across the not for profit, government and philanthropy sectors, running social impact consulting teams from the helm as Chief Executive Officer.

With an MBA from Peking University, multiple not for profit board positions and recognition in the Telstra Business Woman of the Year Awards, she has a proven track record of innovative strategic thinking that drives tangible impact. With particularly deep experience in gender equity, the arts and philanthropy, Felicity is known for her ability to craft crisp strategic narratives and facilitate powerful partnerships.

An avid public speaker, she's also made guest appearances on leading podcasts and is widely published. Felicity is a key advocate of the B Corp and Shared Value movements and founding member of Women in Impact, the Impact Circle and League of Intrapreneurs.

RCH Foundation Director since 2023.

SAMEER KUMAR BBUS FCA

Sammy Kumar is the Co-Founder and Chief Executive Officer of Sayers Group. He has over 35 years' experience across strategy, deals, digital, financial effectiveness, and operations. Sammy served on the Board of the RCH from July 2012 to July 2015 and was reappointed in July 2018.

RCH Foundation Director since 2015.

KARL KUTNER BPD

Karl Kutner is an Executive Director of Central Equity. Karl is responsible for all acquisitions and town planning matters along with overseeing the sales and marketing departments, and has been an integral member of the Central Equity Group since its growth years on Southbank in the early 1990s. Karl holds a Bachelor Degree in Planning and Design from the University of Melbourne along with a Certificate IV in Business from RMIT.

RCH Foundation Director since 2016.

TIFFANY LUCAS

Tiffany's career spans consulting, fundraising and legal practice at top firms in the US and Australia.

Tiffany is currently a Senior Associate at Riordan and Riordan, a boutique law firm in Melbourne, where she practices commercial law and estate planning. She was previously a Senior Associate at Arnold Bloch Leibler. From 2013 – 2016, Tiffany served as Development Director at Melbourne Theatre Company.

Tiffany holds a Bachelor of Arts in Communications and English (Summa cum laude), a Juris Doctor in Law (Magna cum laude) and a Masters of Bioethics from Monash University. She is also a graduate of the Australian Institute of Company Directors and was a participant in the Victorian Government's 2022 Women's Board Leadership Program.

Tiffany is the current President of the RCH Auxiliaries. She also holds several other philanthropic leadership roles. She is currently a Director and Vice-President of Arts Project Australia (APA), Chair of the APA Foundation and Director and Secretary of TEDxMelbourne Ltd.

She previously served on the Development Board of the RCH's Children's Bioethics Centre, the RCH Clinical Ethics Committee, as a Director and Secretary of Dancehouse Inc, as a Director of the Northern Rivers Performing Arts Centre (NORPA) and was President of the American Women's Association.

RCH Foundation Director since 2022.

WENDY NORRIS

Wendy Norris is the Chief Executive Officer of OneFortyOne, a forestry and wood products company with 500 employees across Australia and New Zealand.

Previously Wendy spent 13 years in the investment team at Future Fund, most recently in the role of Chair of the Investment Committee for the \$250 billion sovereign wealth fund. Prior to this Wendy was Deputy Chief Investment Officer, Private Markets at Future Fund, responsible for leading investment strategy and implementation for the Infrastructure and Timberland, Private Equity and Property asset classes.

Wendy holds an applied science degree from the University of New South Wales, a graduate management diploma from the Australian Graduate School of Management and has completed the Advanced Management Program at INSEAD.

RCH Foundation Director since 2022.

We would like to recognise the RCH Foundation Board Directors who stepped down in 2022/2023. We are incredibly grateful for their service and leadership and would like to thank them for their commitment to supporting children and young people.

PETER YATES AM

RCH Foundation Director from January 2001 – October 2022
RCH Foundation Chairman from July 2012 – October 2022

ALISA CAMPLIN-WARNER AM

RCH Foundation Director from June 2013 – October 2022

DR ROWENA COUTTS

RCH Foundation Director from July 2022 – May 2023

STEPHEN GILLIN

RCH Foundation Director from November 2019 – December 2022

BERNADETTE MCDONALD

RCH Foundation Director from September 2021 – January 2023

PROFESSOR FIONA NEWALL

RCH Foundation Director from November 2019 – October 2022

ANDREW SHELTON

RCH Foundation Director from June 2013 – December 2022

MICHELLE TELFER

RCH Foundation Director from July 2022 – June 2023

DR MIRIAM WEISZ OAM

RCH Foundation Director from October 2016 – December 2022

COMMITTEES

EXECUTIVE, AUDIT AND RISK

Dr Gillian Sparkes AM - Chair

Richard Leder OAM

Professor James Angus AO

Tiffany Fuller

Sameer Kumar

Sue Hunt AM

Martin Lobb

INVESTMENT

Tiffany Fuller - Chair

Richard Leder OAM

Peter Yates AM

Wendy Norris

Sue Hunt AM

Martin Lobb

Macquarie Private Bank
(external advisors)

GRANTS

Richard Leder OAM - Chair

Dr Gillian Sparkes AM

Peter Blunden

Tiffany Lucas

Professor James Angus AO

Sue Hunt AM

Bernadette McDonald

Professor Kathryn North AC

Professor Sarath Ranganathan

REMUNERATION

Richard Leder OAM - Chair

Dr Gillian Sparkes AM

Sue Hunt AM

NOMINATIONS

Richard Leder OAM - Chair

Dr Gillian Sparkes AM

Peter Blunden

Sue Hunt AM

AUXILIARIES EXECUTIVE

Penny Fowler - Patron

Tiffany Lucas - President

Jan Gilbertson - Vice President

Charlotte Spencer-Roy - Secretary

Robyn Anderson OAM

Ruth Murray

Jan Crockart

Sue Hunt AM

Martin Lobb - Treasurer ex-officio



RCH patient, Olivia

STAFF

EXECUTIVE OFFICE

Sue Hunt AM

Chief Executive Officer

Elizabeth Taylor

Executive Assistant to the
Chief Executive Officer

Jassie-Bree Salmond

Executive Assistant to the
Chief Executive Officer (on leave)

April Kelly

Manager, People and Culture

FUNDRAISING

Ryan Brown

Deputy CEO and Director, Fundraising

Declan Lourey

Manager, Auxiliaries and Fundraising

Laura Buck

Manager, Auxiliaries and Fundraising
(on parental leave)

Georgia Gribble

Fundraising Coordinator

Jaxon Edwards

Fundraising Coordinator

Lucia Di Maio

Auxiliaries Coordinator

Ari Brown

Gratitude Hub Coordinator

Kate Dear

Manager, Corporate Engagement

Ally Pekin

Manager, Individual Giving

Philippa Prescott

Philanthropy Executive

Adelaide Kraina

Philanthropy Coordinator

Terri Scanlon

Philanthropy Coordinator

Amanda McCosker

Trusts and Foundations Coordinator

Kathryn Sell

Philanthropy Lead

Annalese Fowler

Philanthropy Coordinator

Natalie Andrews

Gift in Will Coordinator

Ben O'Connell

Manager, Supporter Relations

Samantha Townley

Direct Marketing Coordinator

Catherine Donaldson

Database Officer

Thomas Putan

Supporter Relations Officer

Emma Brown

Office Manager

GRANTS

Amy Whitehead

Director, Grants

Anne Young

Grants Administrator

Catherine Li

Grants Administrator

BUSINESS AND FINANCE

Martin Lobb

Chief Financial Officer

Shane Buckley

Manager, Finance

Jatin Khimasia

Manager, Finance Projects

Anjalee Herath

Senior Accountant

Vickie Bell

Financial Accountant

Vickie Kane

Finance Officer

Leslie Davis

Finance Officer

COMMUNICATIONS

Brooke Daly

Director, Communications

Laura Sullivan

Director, Communications
(on parental leave)

Chloe Boulton

Manager, Communications

Madeline Robinson

Communications Coordinator

Tina Procter

Communications Coordinator

Molly Whiticker-Ferrie

Digital Marketing and
Communications Coordinator

Kyrin Edwards

Senior Graphic Designer

Eve Slade

Graphic Designer

THE ROYAL CHILDREN'S HOSPITAL FOUNDATION


Level 2, 48 Flemington Road
Parkville, VIC Australia 3052

+61 3 9345 5037
rch.foundation@rch.org.au
rchfoundation.org.au

 facebook.com/therchfoundation

 twitter.com/rch_foundation

 rch.foundation

 The Royal Children's Hospital Foundation Melbourne
ABN 15 007 143 142

THE ROYAL CHILDREN'S HOSPITAL AUXILIARIES

The Auxiliaries are community groups established across Victoria that raise funds for the hospital.

+61 3 9345 5037
auxiliaries.office@rch.org.au
rchfoundation.org.au/auxiliaries

THE ROYAL CHILDREN'S HOSPITAL GOOD FRIDAY APPEAL

PO Box 14744
Melbourne, VIC Australia 3001

+61 3 9292 1166
goodfridayappeal@heraldsun.com.au
goodfridayappeal.com.au



JOIN THE CONVERSATION ONLINE

 facebook.com/therchfoundation

 twitter.com/rch_foundation

 [rch.foundation](https://instagram.com/rch.foundation)

 The Royal Children's Hospital Foundation Melbourne